



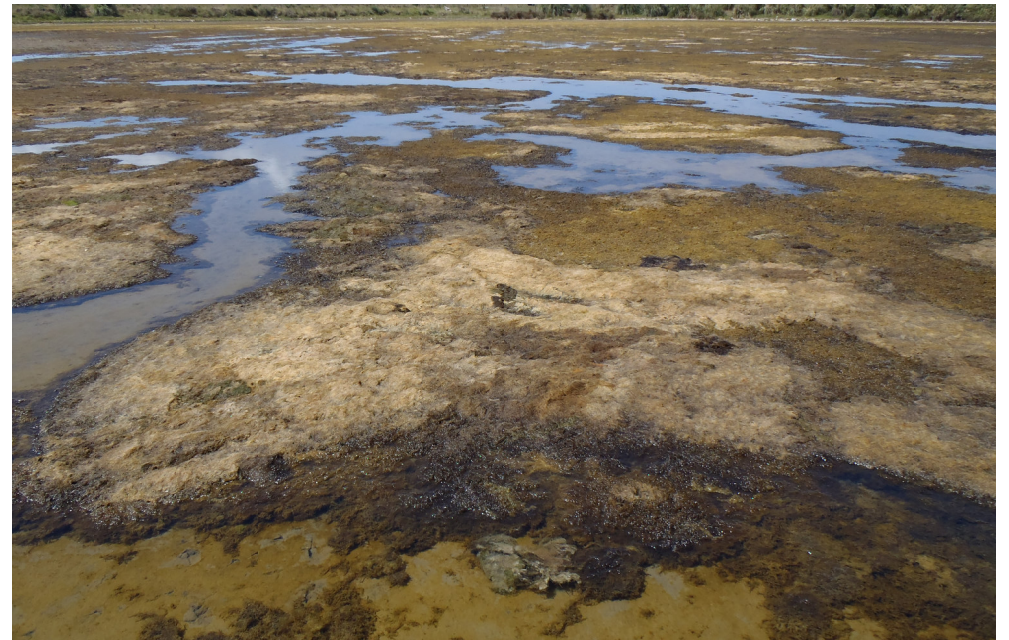
Maketu near site 35C



Maketu 35D towards 33



Oscillatoria sp, upper estuary 3



Maketu S33 algae a



Maketu spoonbill at site 37C



Maketu spoonbill at S35 c



Maketu looking SE S37



Maketu site 37B



Maketu west S43 snails



Maketu W S43 rotting algae



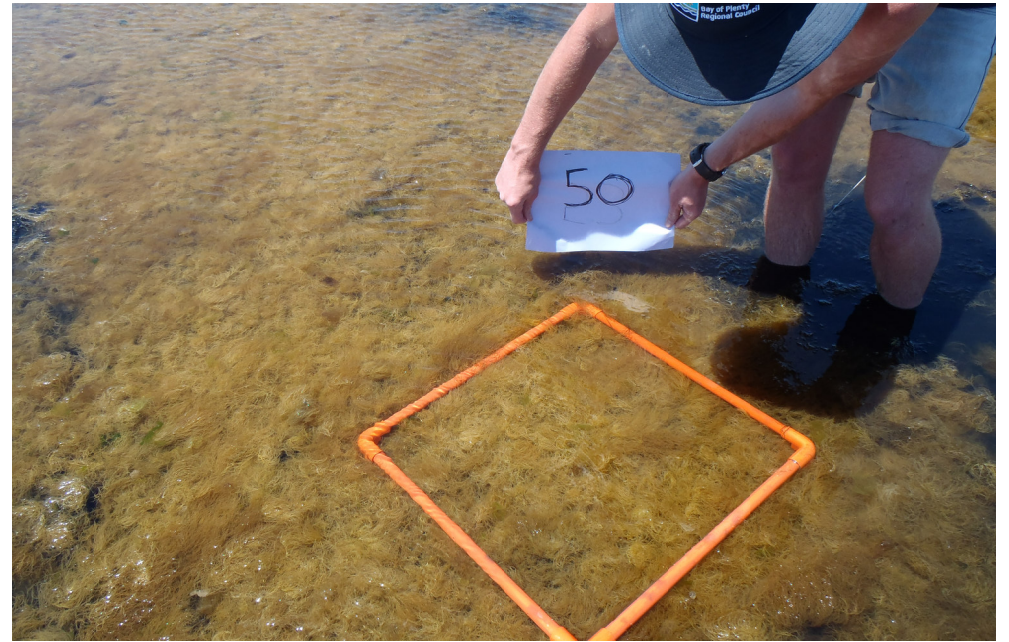
Maketu Estuary S41



Maketu S48 to S



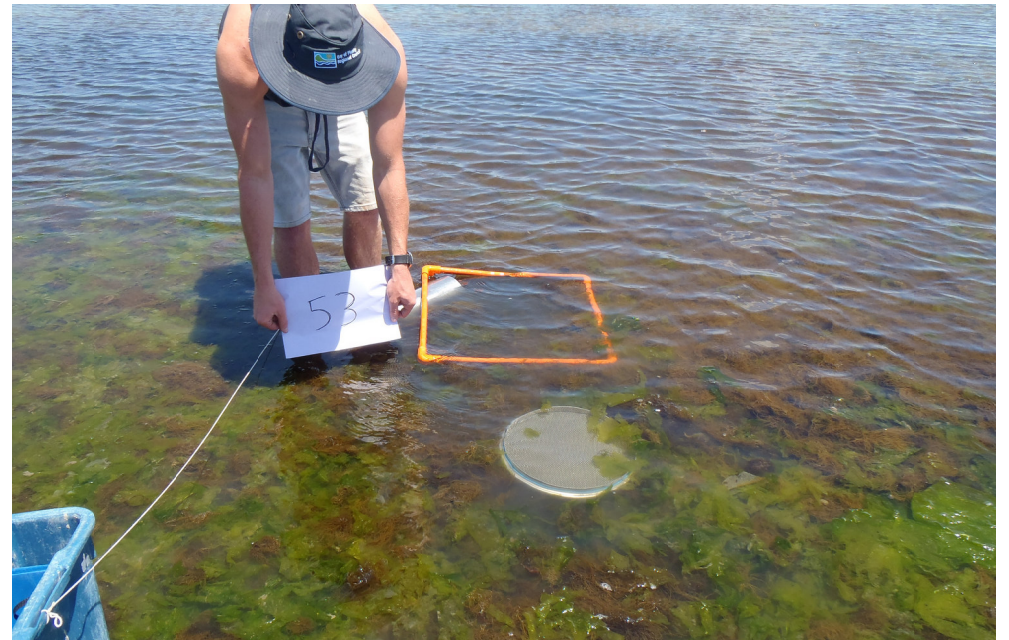
Maketu S51



Maketu S50



Maketu S56 site



Maketu S53



Papahikahawai lagoon Lyngbya sp



Papahikahawai channel



Papahikahawai lagoon Lygbya 3



Papahikahawai lagoon