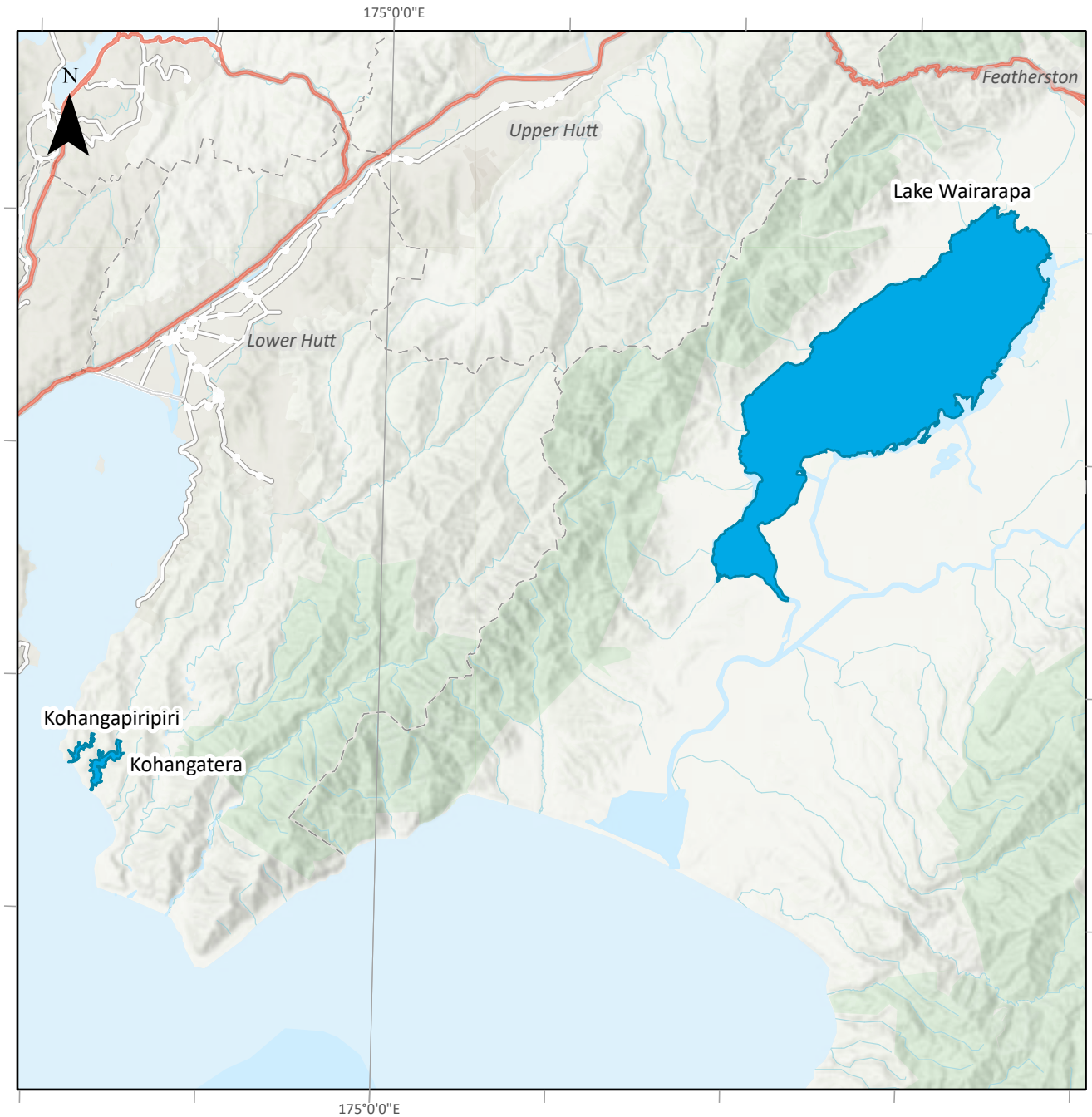

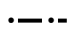



Significant habitats for indigenous birds in lakes (Schedule F2b)

Map 23



-  Significant lake habitat for indigenous birds
-  Region boundary line
-  State Highway




0 2.5 5 10 km
1:250,000

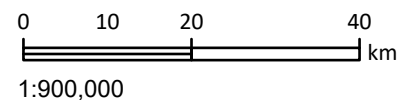
This version of the map is not complete. The version of this map available online through the online web map viewer shows the complete, detailed information on a GIS overlay that is not shown on this hard copy. The online version is available on the Council's website at <https://mapping.gw.govt.nz/gwrc/> (select theme Natural Resources Plan) and can be accessed from the Council offices or public library.

Significant habitats for indigenous birds in the coastal marine area (Schedule F2c)

Map 24

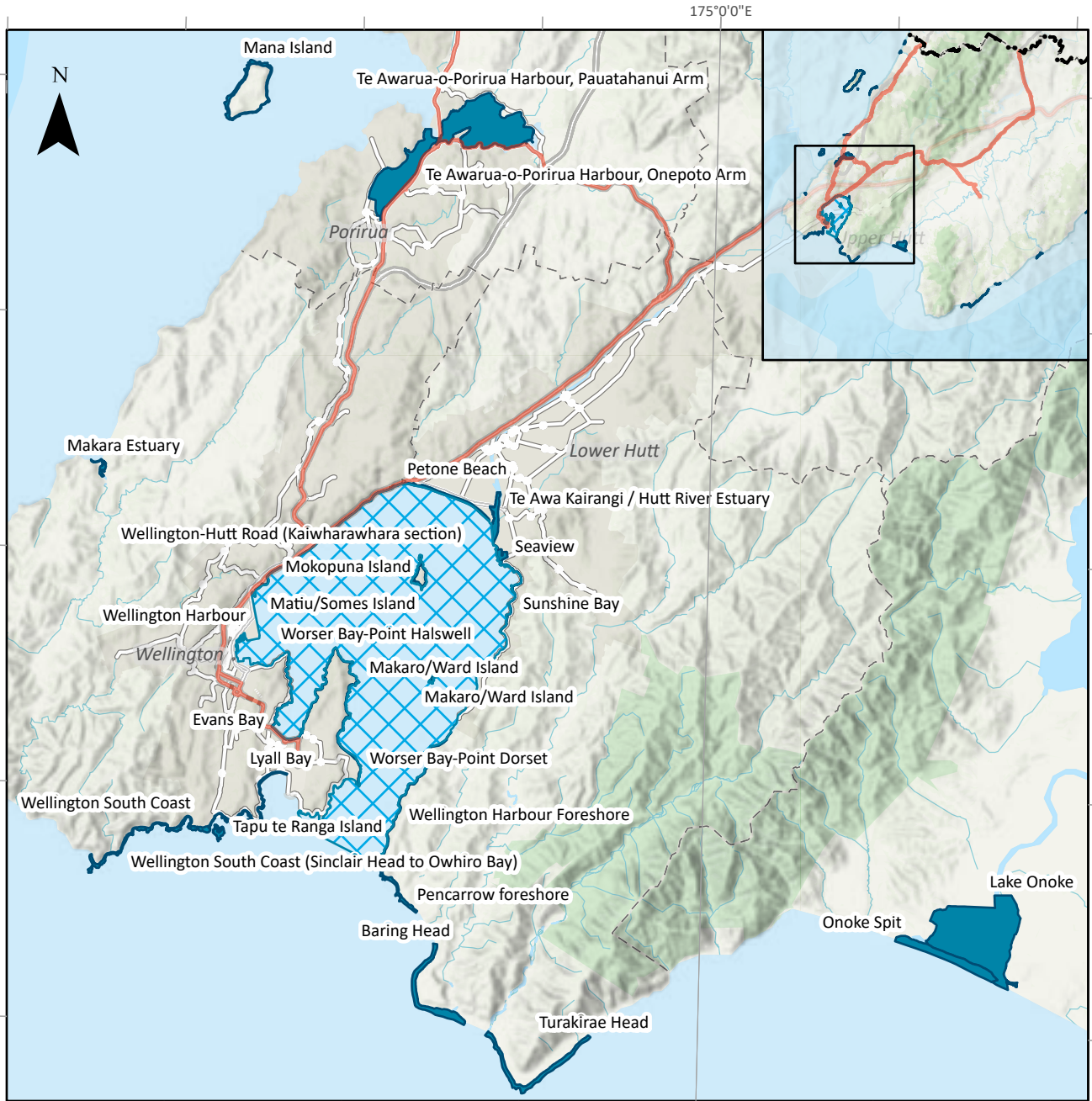


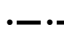


-  Region boundary line
-  State Highway
-  Significant habitat for indigenous birds in the Coastal Marine Area

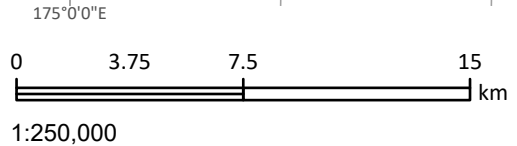


This version of the map is not complete. The version of this map available online through the online web map viewer shows the complete, detailed information on a GIS overlay that is not shown on this hard copy. The online version is available on the Council's website at <https://mapping.gw.govt.nz/gwrc/> (select theme Natural Resources Plan) and can be accessed from the Council offices or public library.

Significant habitats for indigenous birds in the coastal marine area - Wellington Harbour (Schedule F2c) Map 25



-  Region boundary line
-  State Highway
-  Significant habitat for indigenous birds in the Coastal Marine Area



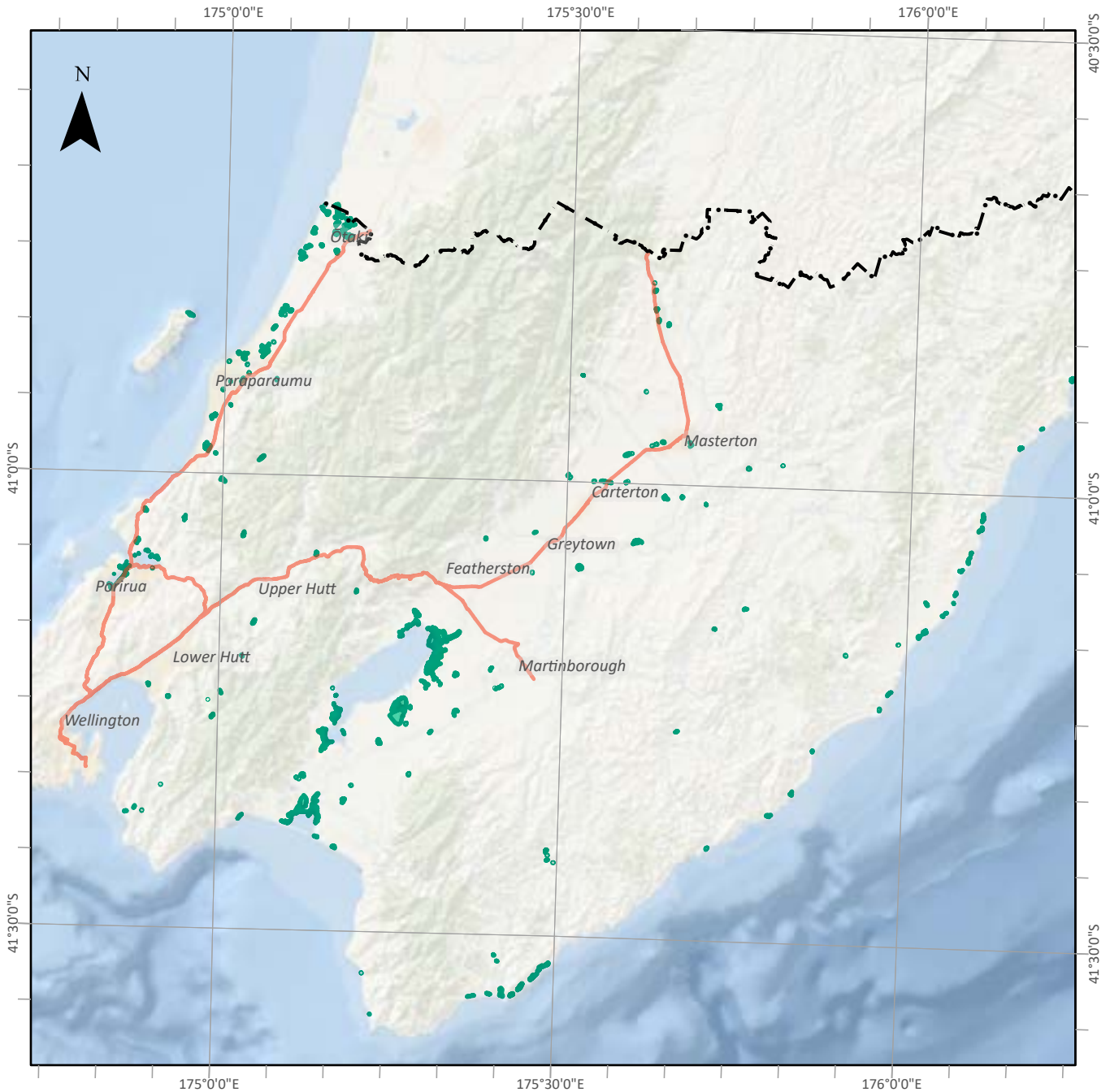
This version of the map is not complete. The version of this map available online through the online web map viewer shows the complete, detailed information on a GIS overlay that is not shown on this hard copy. The online version is available on the Council's website at <https://mapping.gw.govt.nz/gwrc/> (select theme Natural Resources Plan) and can be accessed from the Council offices or public library.




Copyright
 Basemap: Eagle Technology, GWRC, LINZ
 Topographic & Cadastral: LINZ, CoreLogic
 Projection: NZTM 2000

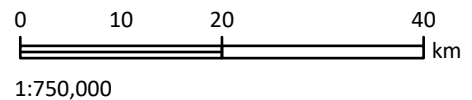


Identified Natural Wetlands (Schedule F3)

Map 26



-  Region boundary line
-  State Highway
-  Schedule F3 - Identified Natural Wetlands

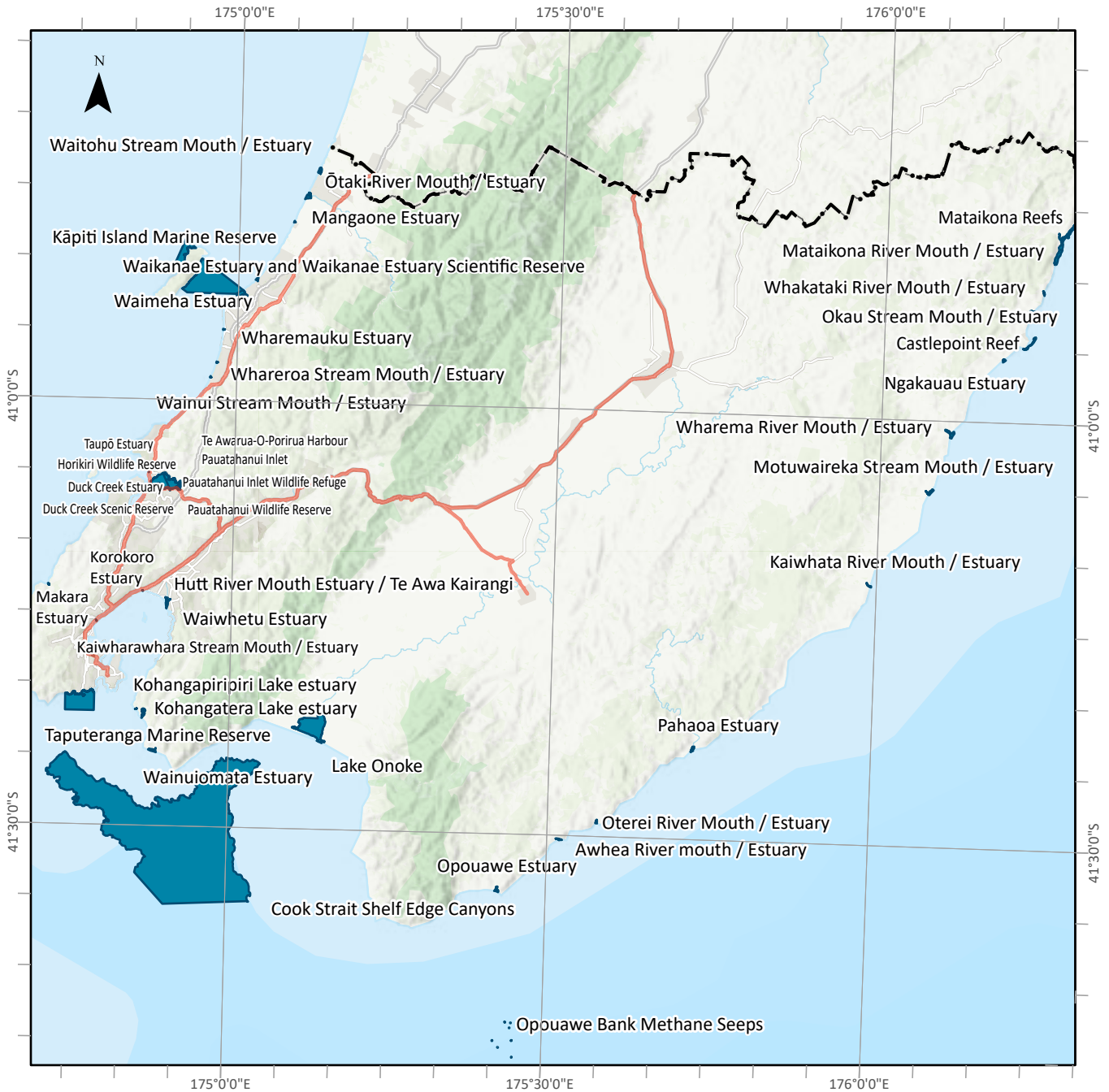



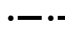

* Wetlands >5ha labelled

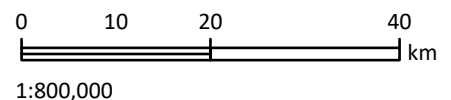
This version of the map is not complete. The version of this map available online through the online web map viewer shows the complete, detailed information on a GIS overlay that is not shown on this hard copy. The online version is available on the Council's website at <https://mapping.gw.govt.nz/gwrc/> (select theme Natural Resources Plan) and can be accessed from the Council offices or public library.

Sites with significant indigenous biodiversity values in the coastal marine area (Schedule F4)

Map 27



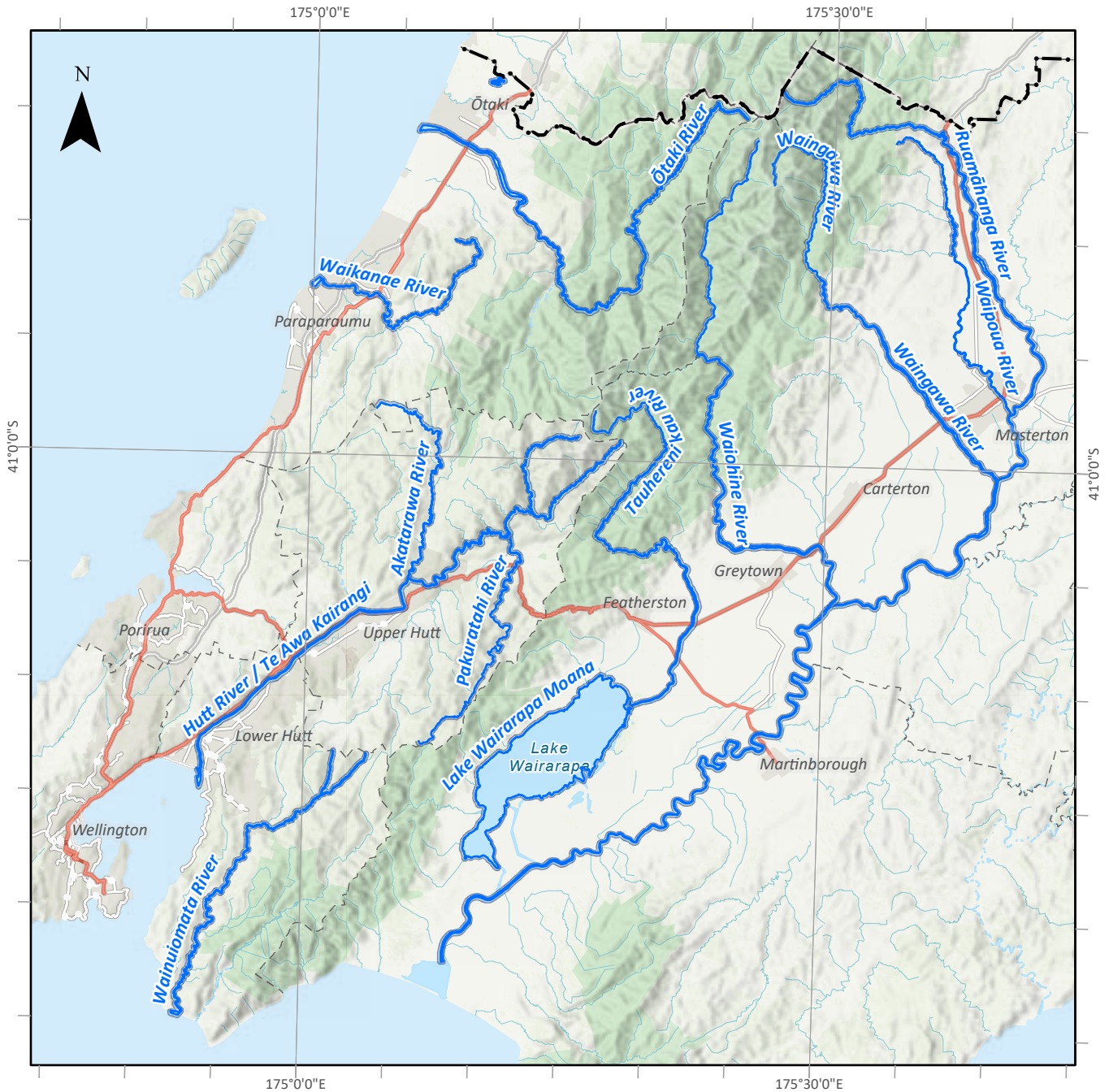
-  Significant CMA site for indigenous biodiversity
-  Region boundary line
-  State Highway



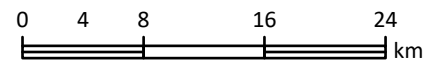
This version of the map is not complete. The version of this map available online through the online web map viewer shows the complete, detailed information on a GIS overlay that is not shown on this hard copy. The online version is available on the Council's website at <https://mapping.gw.govt.nz/gwrc/> (select theme Natural Resources Plan) and can be accessed from the Council offices or public library.

Significant primary contact recreation rivers and lakes (Schedule H1)

Map 28



- Recreation river or lake
- - - Region boundary line
- State Highway

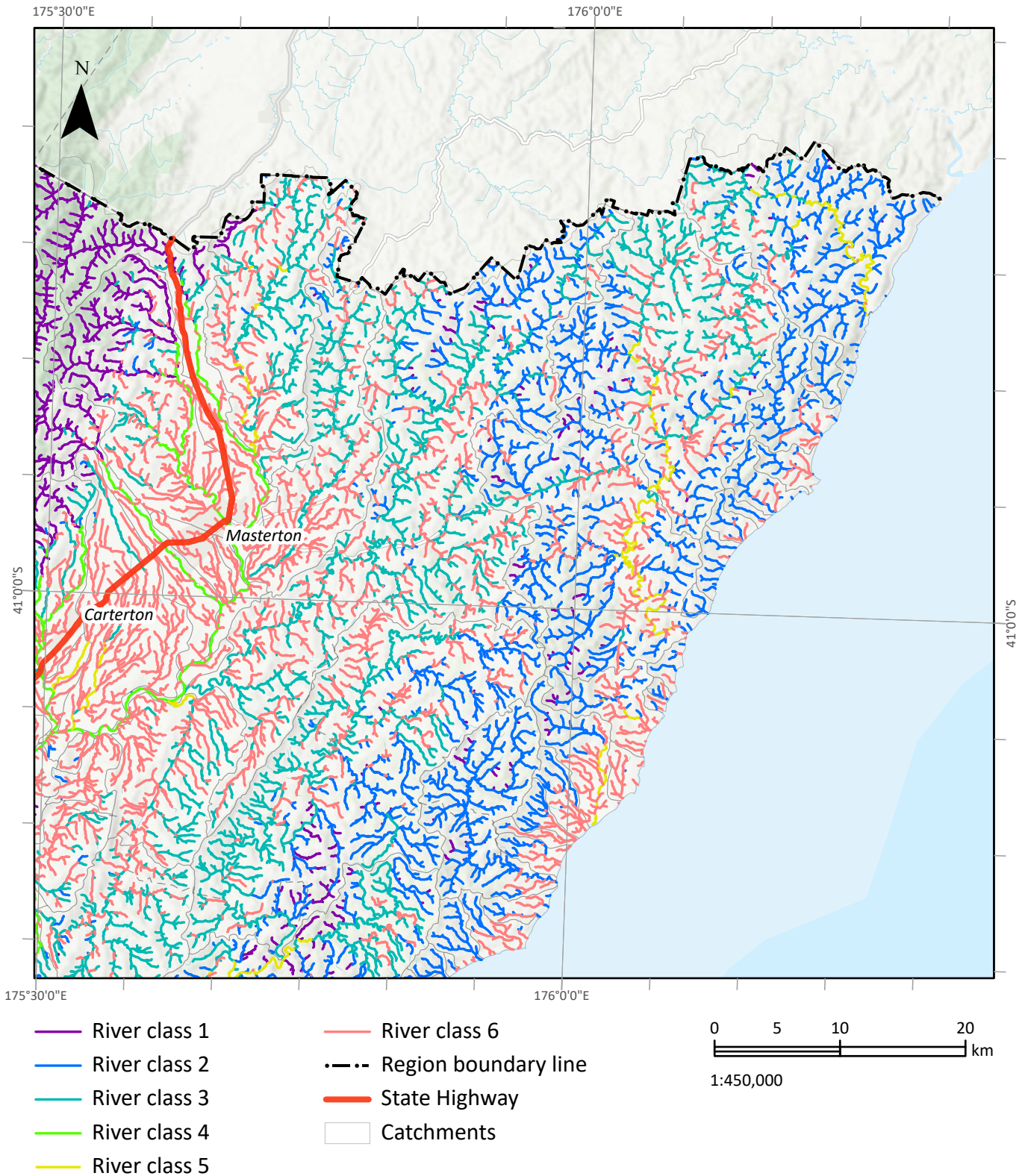


1:500,000

This version of the map is not complete. The version of this map available online through the online web map viewer shows the complete, detailed information on a GIS overlay that is not shown on this hard copy. The online version is available on the Council's website at <https://mapping.gw.govt.nz/gwrc/> (select theme Natural Resources Plan) and can be accessed from the Council offices or public library.

Modelled river classes - upper Wairarapa valley catchments (Table 3.4)

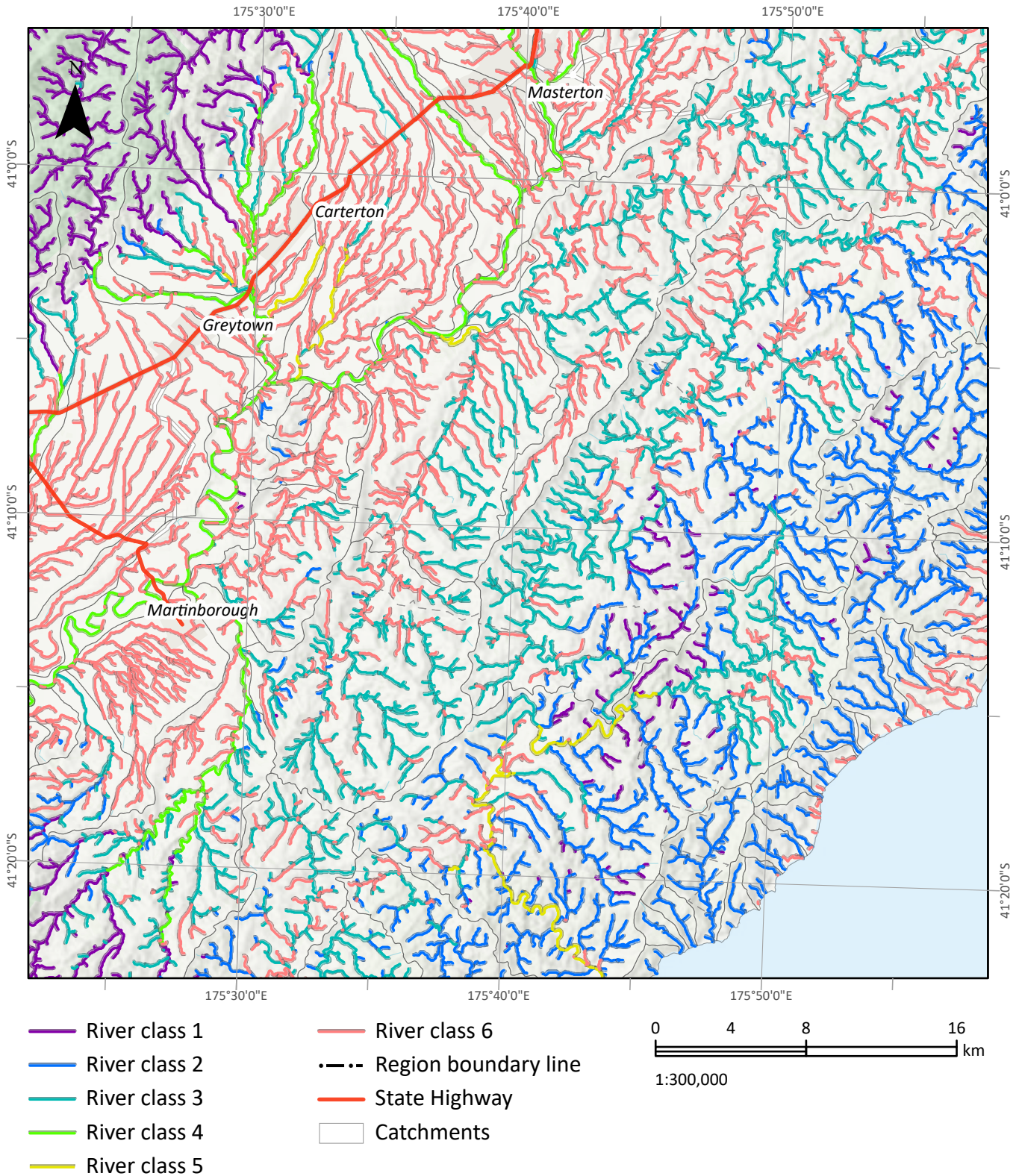
Map 29



This version of the map is not complete. The version of this map available online through the online web map viewer shows the complete, detailed information on a GIS overlay that is not shown on this hard copy. The online version is available on the Council's website at <https://mapping.gw.govt.nz/gwrc/> (select theme Natural Resources Plan) and can be accessed from the Council offices or public library.

Modelled river classes - middle Wairarapa valley catchments (Table 3.4)

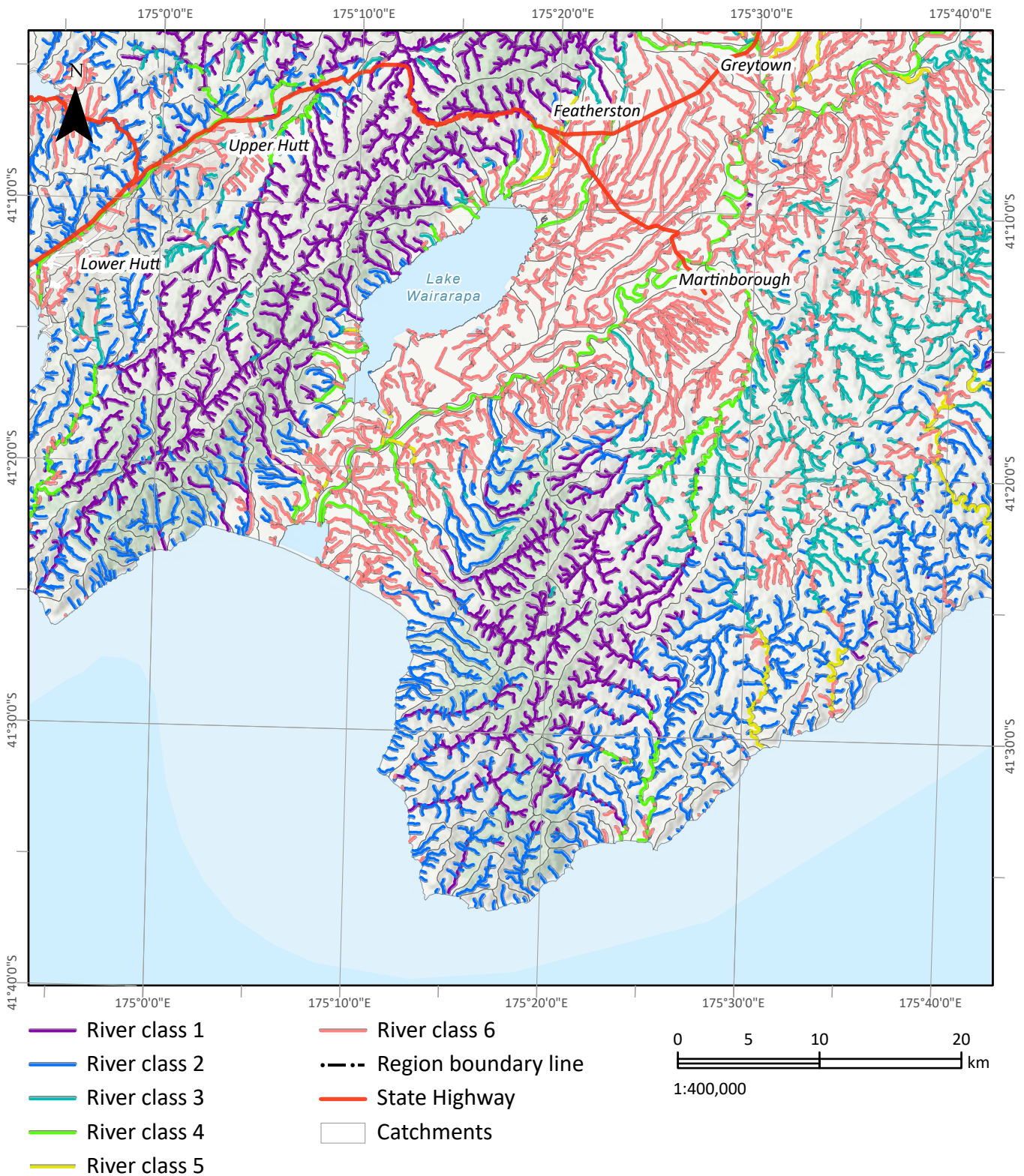
Map 30



This version of the map is not complete. The version of this map available online through the online web map viewer shows the complete, detailed information on a GIS overlay that is not shown on this hard copy. The online version is available on the Council's website at <https://mapping.gw.govt.nz/gwrc/> (select theme Natural Resources Plan) and can be accessed from the Council offices or public library.

Modelled river classes - Lake Wairarapa and lower valley catchments (Table 3.4)

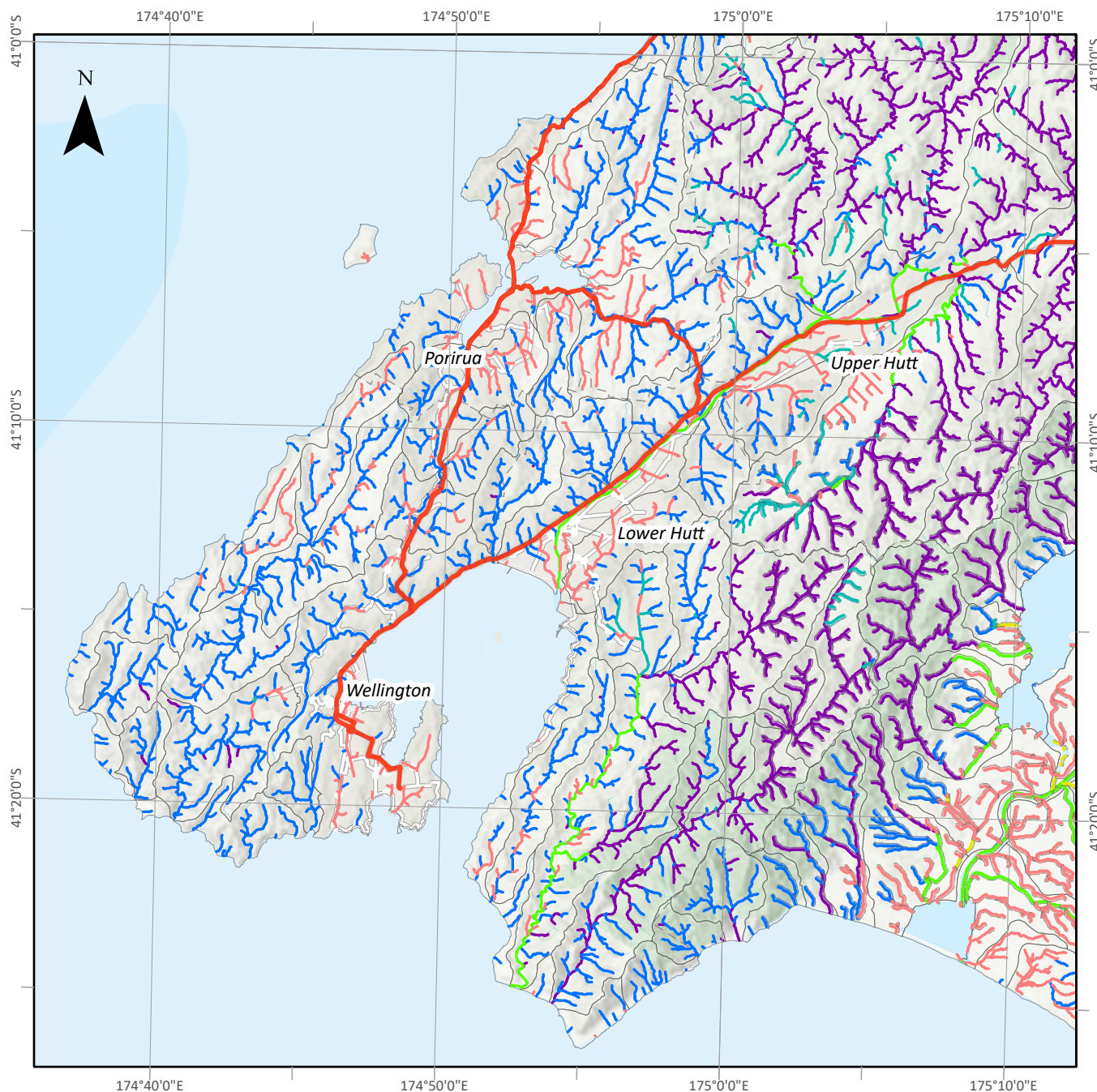
Map 31



This version of the map is not complete. The version of this map available online through the online web map viewer shows the complete, detailed information on a GIS overlay that is not shown on this hard copy. The online version is available on the Council's website at <https://mapping.gw.govt.nz/gwrc/> (select theme Natural Resources Plan) and can be accessed from the Council offices or public library.

Modelled river classes - Wellington, Hutt Valley, Porirua and Wainuiomata catchments (Table 3.4)

Map 32



- | | |
|---------------|--------------------------|
| River class 1 | River class 6 |
| River class 2 | Region boundary line |
| River class 3 | State Highway |
| River class 4 | Catchments (generalised) |
| River class 5 | |

0 4 8 16

 1:300,000

This version of the map is not complete. The version of this map available online through the online web map viewer shows the complete, detailed information on a GIS overlay that is not shown on this hard copy. The online version is available on the Council's website at <https://mapping.gw.govt.nz/gwrc/> (select theme Natural Resources Plan) and can be accessed from the Council offices or public library.