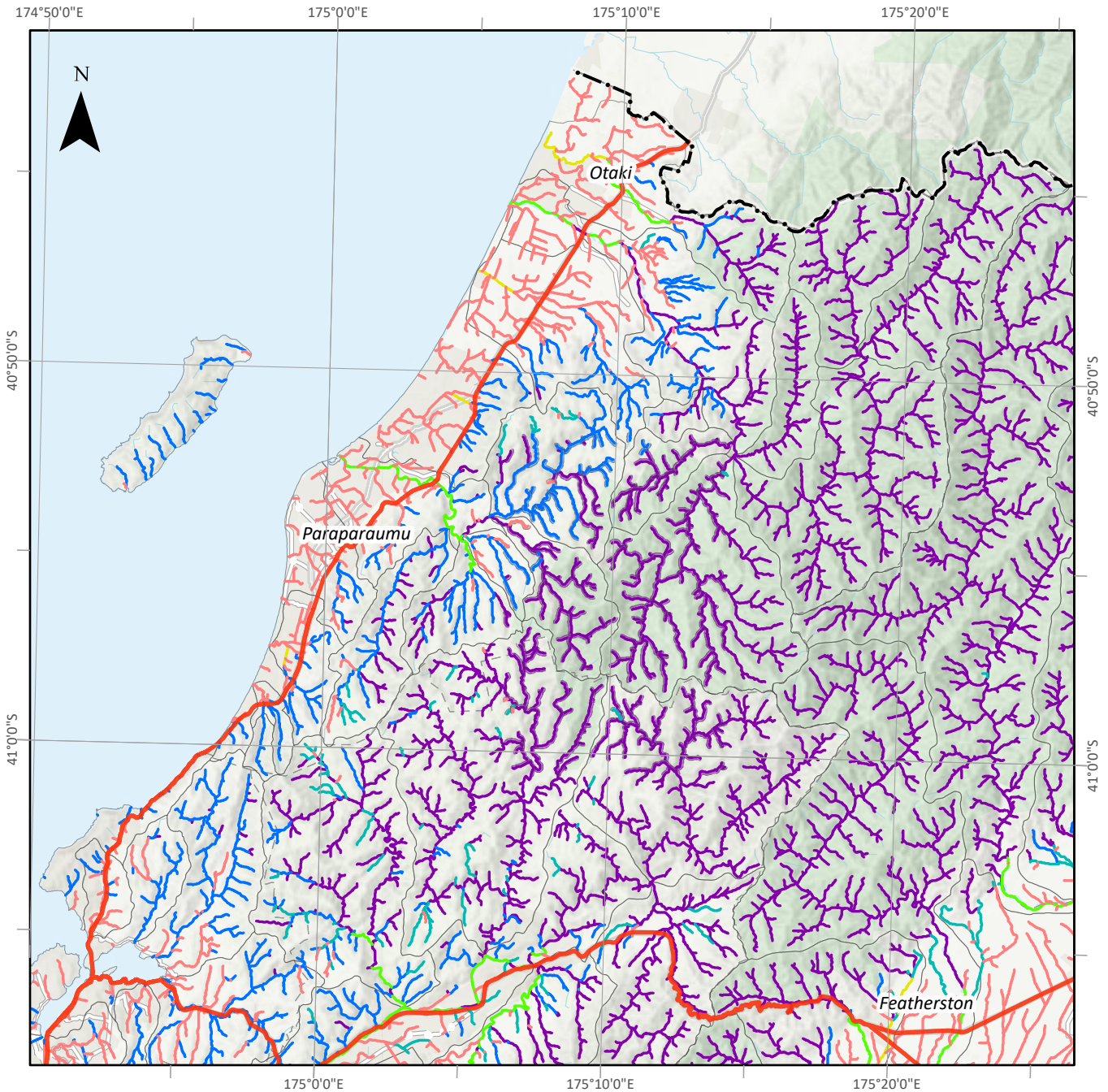









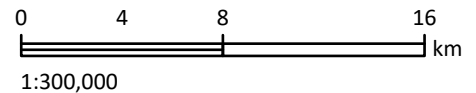


Modelled river classes - Kāpiti Coast catchments (Table 3.4)

Map 33



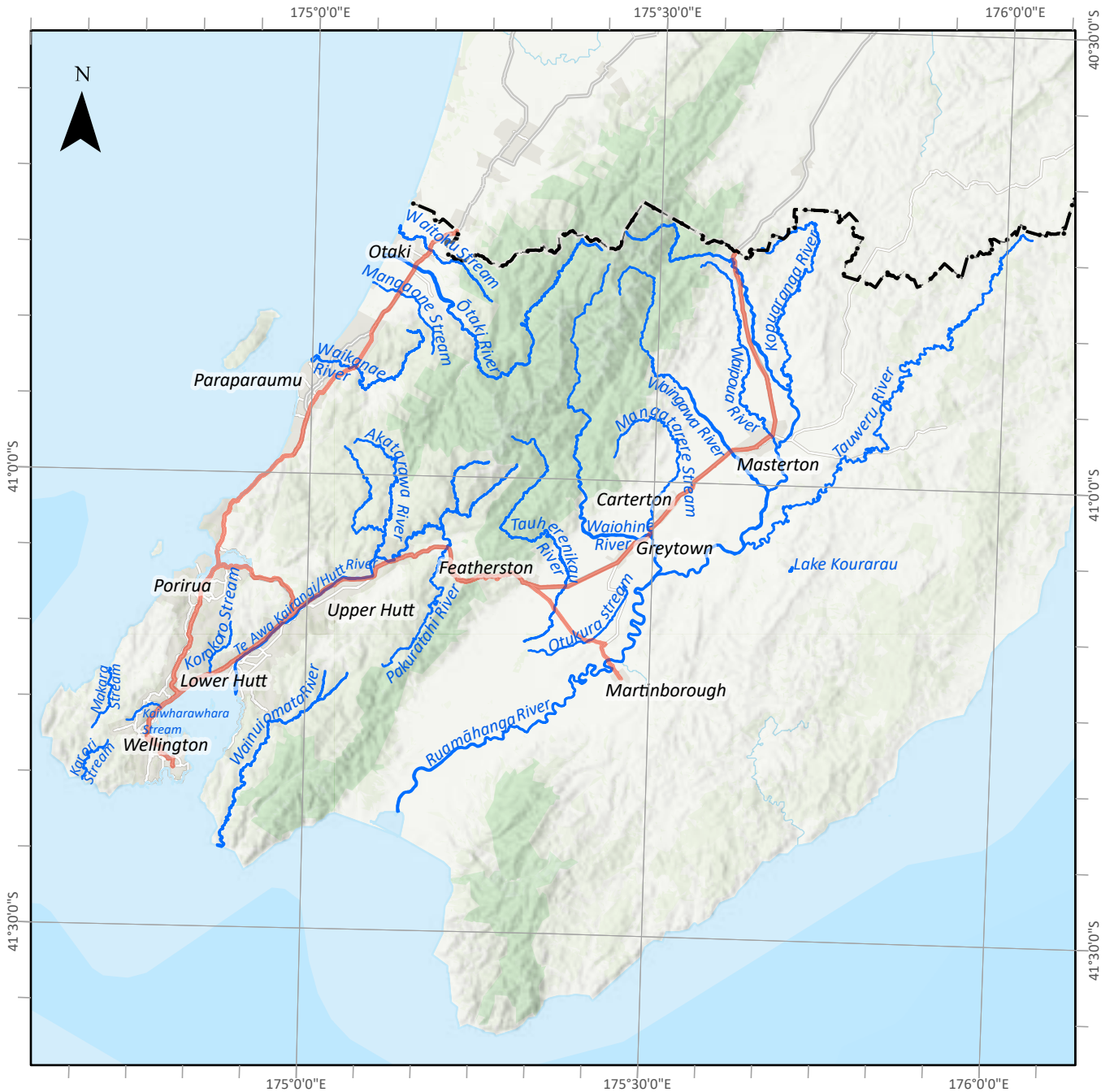
- | | |
|---|--|
|  River class 1 |  River class 6 |
|  River class 2 |  Region boundary line |
|  River class 3 |  State Highway |
|  River class 4 |  Catchments (generalised) |
|  River class 5 | |



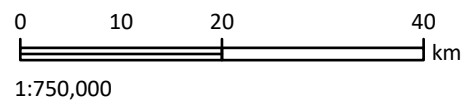
This version of the map is not complete. The version of this map available online through the online web map viewer shows the complete, detailed information on a GIS overlay that is not shown on this hard copy. The online version is available on the Council's website at <https://mapping.gw.govt.nz/gwrc/> (select theme Natural Resources Plan) and can be accessed from the Council offices or public library.

Important trout fishery rivers (Schedule I, part A)

Map 34



- Important trout fishery river
- - - Region boundary line
- State Highway



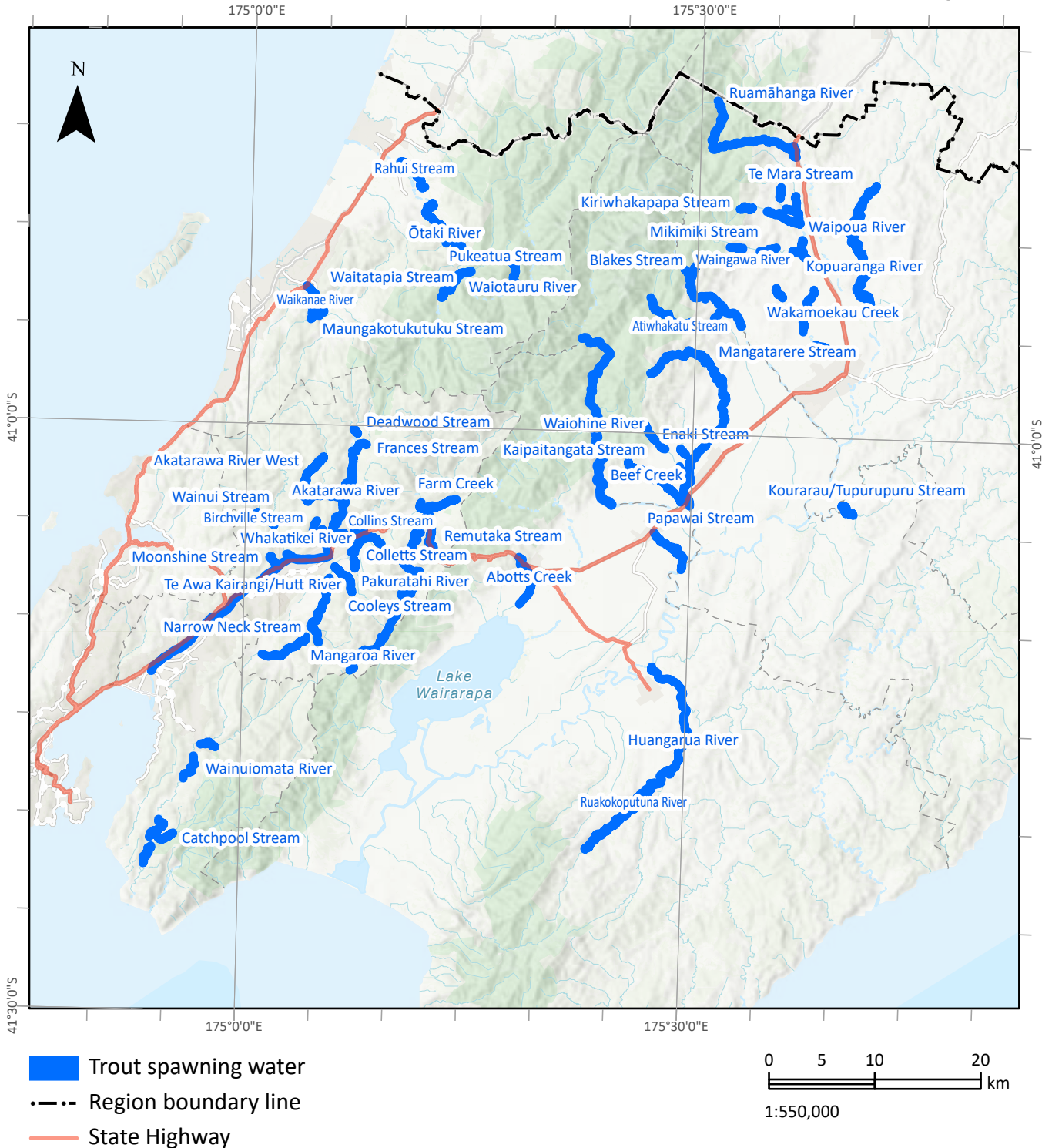
This version of the map is not complete. The version of this map available online through the online web map viewer shows the complete, detailed information on a GIS overlay that is not shown on this hard copy. The online version is available on the Council's website at <https://mapping.gw.govt.nz/gwrc/> (select theme Natural Resources Plan) and can be accessed from the Council offices or public library.

Copyright
 Basemap: Eagle Technology, GWRC, LINZ
 Topographic & Cadastral: LINZ, CoreLogic
 Projection: NZTM 2000



Important trout spawning waters (Schedule I, part B)

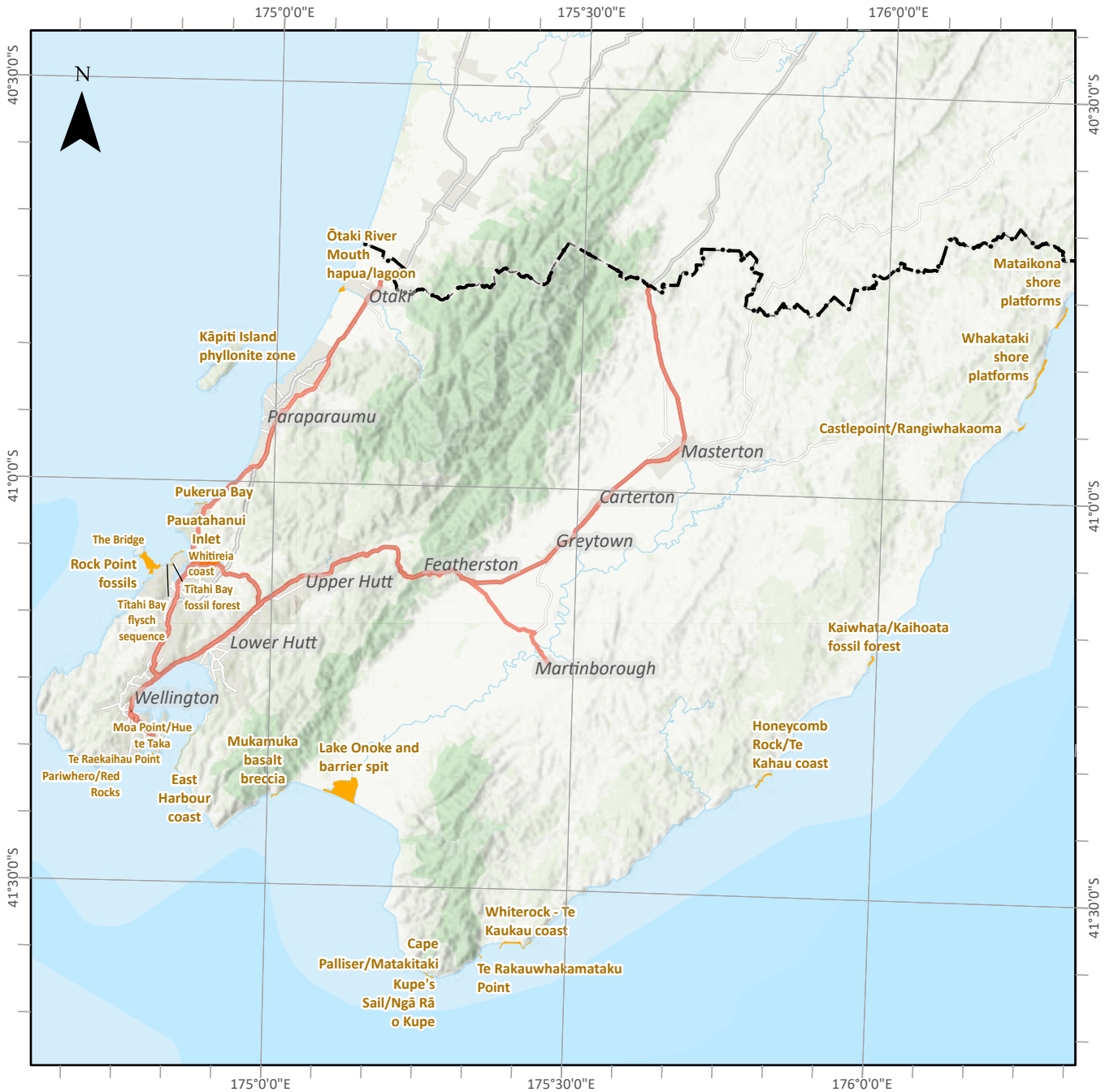
Map 35


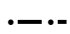



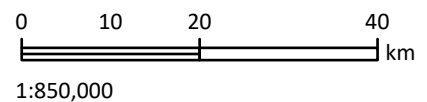
This version of the map is not complete. The version of this map available online through the online web map viewer shows the complete, detailed information on a GIS overlay that is not shown on this hard copy. The online version is available on the Council's website at <https://mapping.gw.govt.nz/gwrc/> (select theme Natural Resources Plan) and can be accessed from the Council offices or public library.

Significant geological features in the coastal marine area (Schedule J)

Map 36



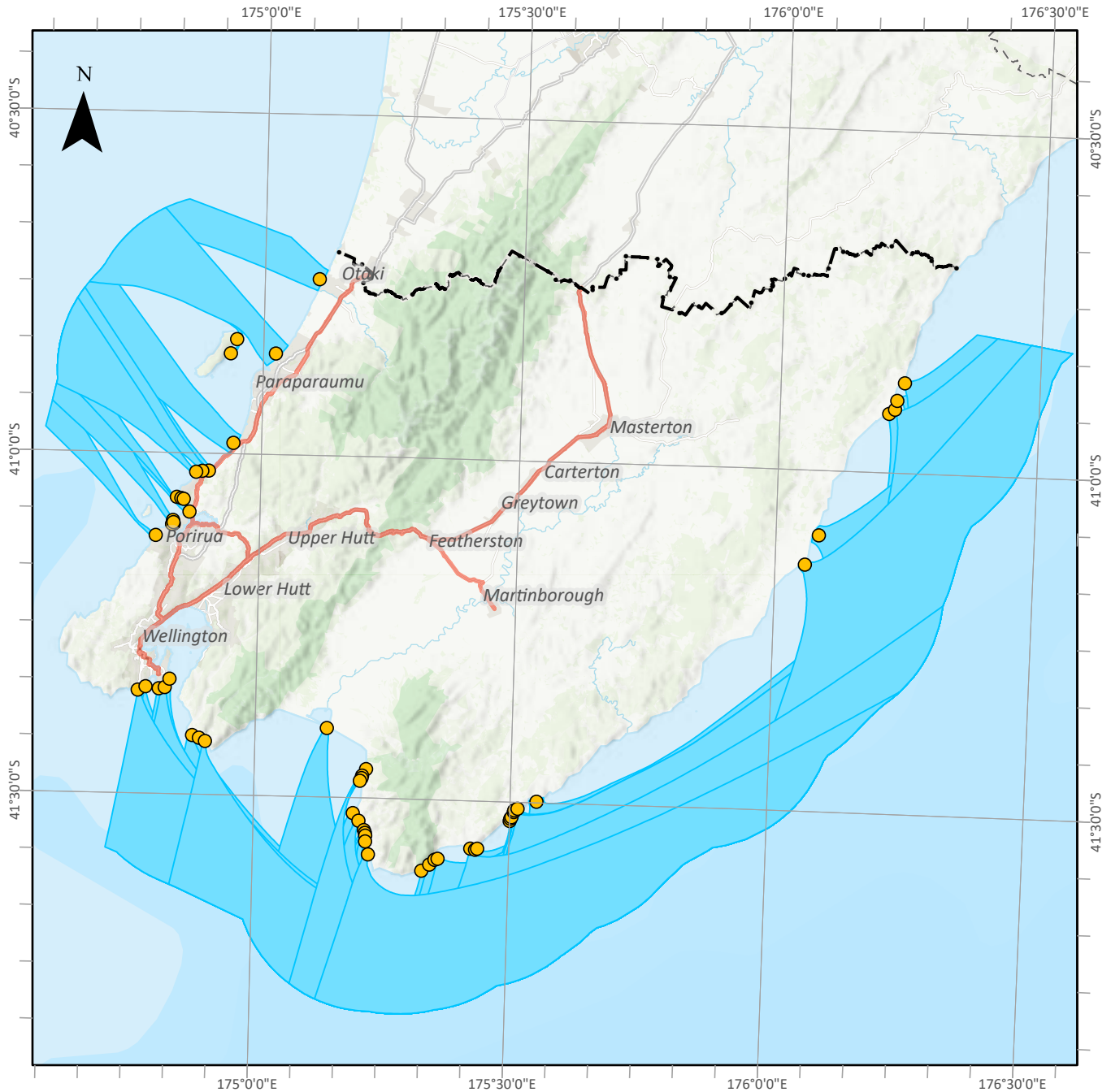
-  Outstanding geological features
-  Region boundary line
-  State Highway



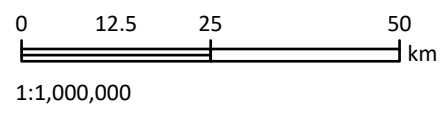
This version of the map is not complete. The version of this map available online through the online web map viewer shows the complete, detailed information on a GIS overlay that is not shown on this hard copy. The online version is available on the Council's website at <https://mapping.gw.govt.nz/gwrc/> (select theme Natural Resources Plan) and can be accessed from the Council offices or public library.

Identified Surf Breaks (Schedule K)

Map 37



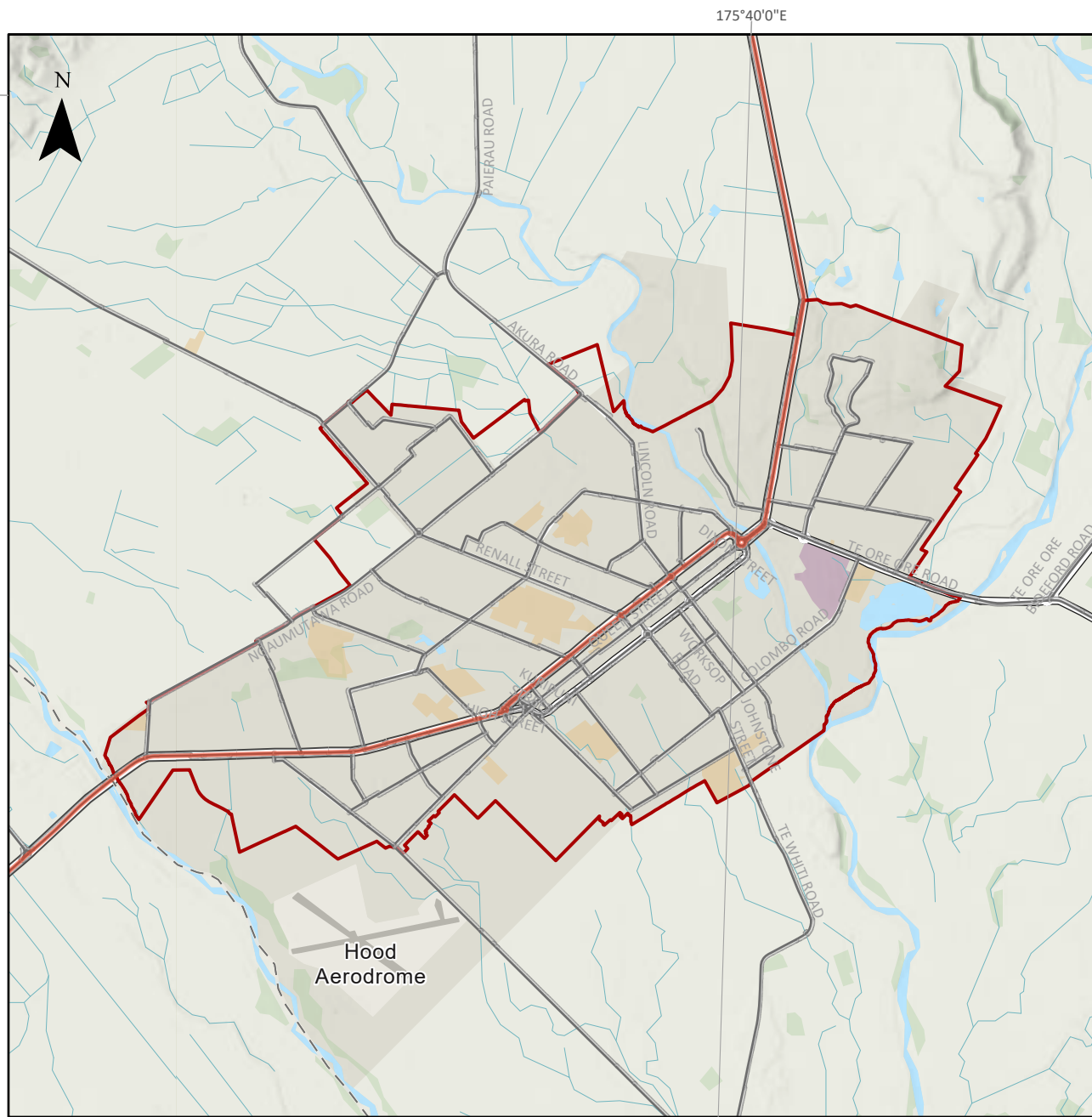
-  Significant surfbreak
-  Swell corridor
-  Region boundary line
-  State Highway



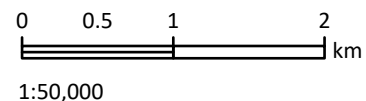
This version of the map is not complete. The version of this map available online through the online web map viewer shows the complete, detailed information on a GIS overlay that is not shown on this hard copy. The online version is available on the Council's website at <https://mapping.gw.govt.nz/gwrc/> (select theme Natural Resources Plan) and can be accessed from the Council offices or public library.

Masterton urban airshed

Map 38



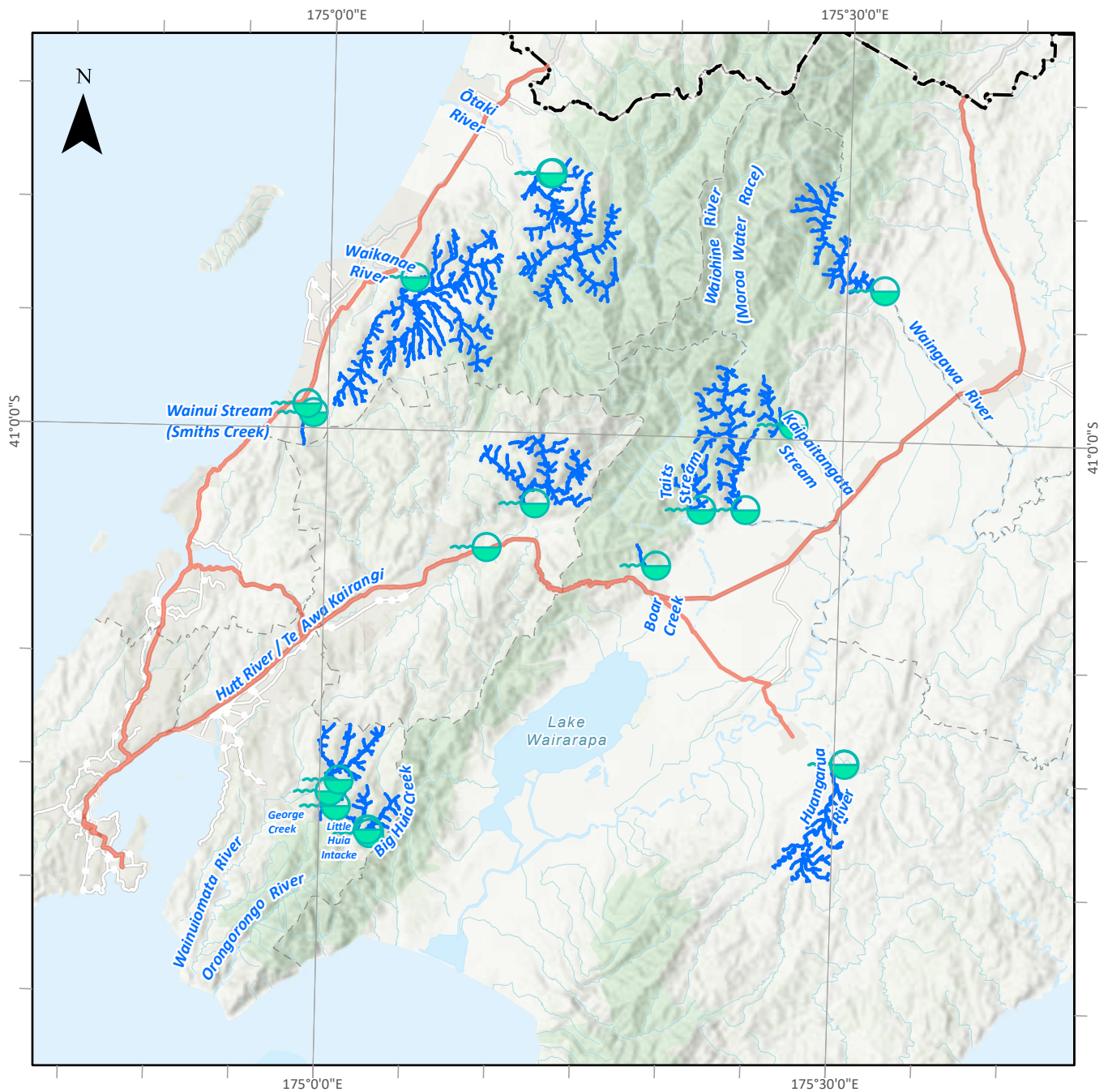
- Masterton urban airshed
- State Highway
- Region boundary line
- Other main roads (arterials, major and medium)



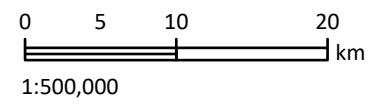
This version of the map is not complete. The version of this map available online through the online web map viewer shows the complete, detailed information on a GIS overlay that is not shown on this hard copy. The online version is available on the Council's website at <https://mapping.gw.govt.nz/gwrc/> (select theme Natural Resources Plan) and can be accessed from the Council offices or public library.

Surface water community drinking water supply protection areas (incorporates Schedule M1)

Map 39



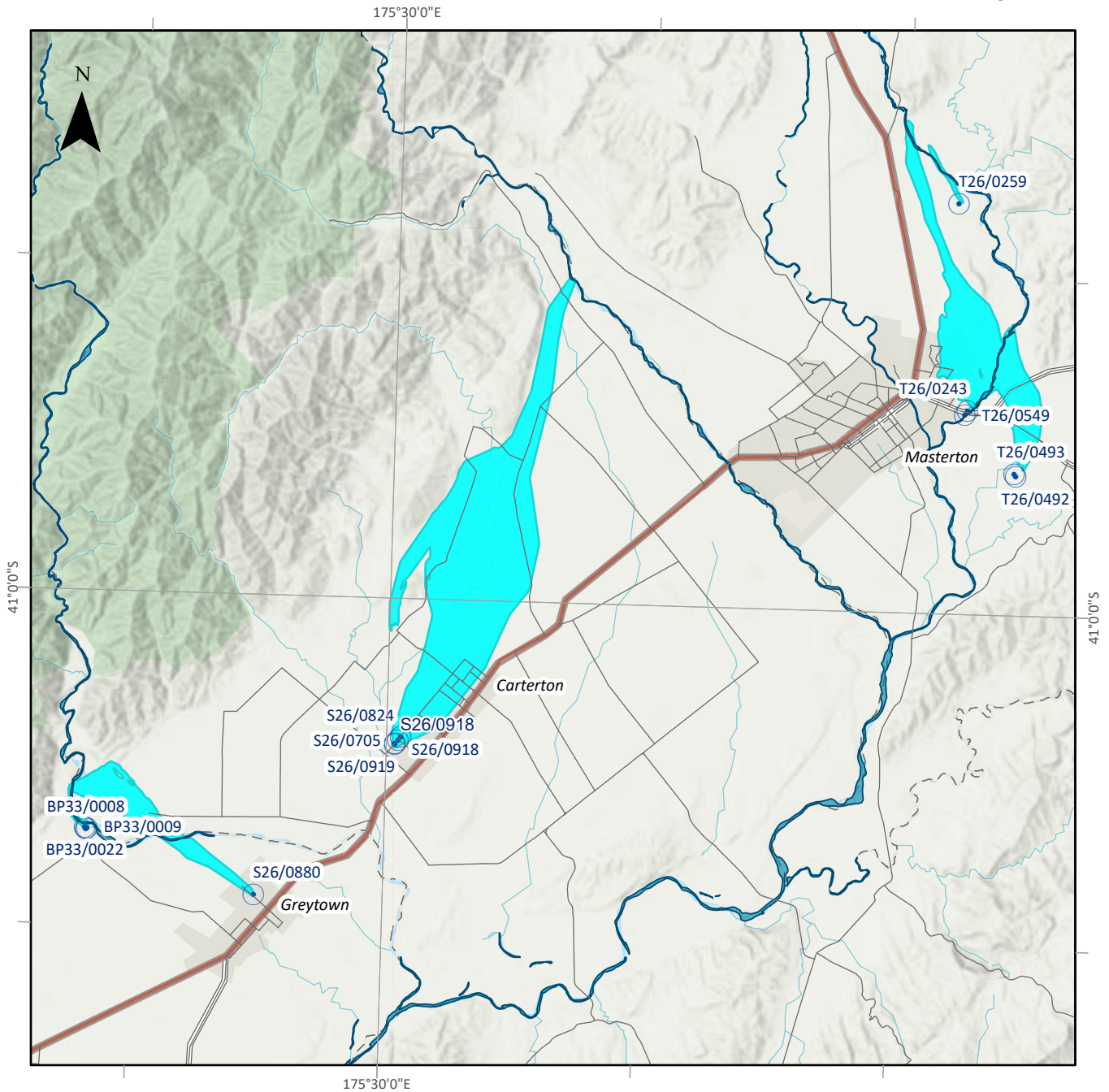
- Community Drinking Water Protection Areas
- State Highway
- Region boundary line
- Abstraction site



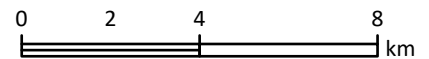
This version of the map is not complete. The version of this map available online through the online web map viewer shows the complete, detailed information on a GIS overlay that is not shown on this hard copy. The online version is available on the Council's website at <https://mapping.gw.govt.nz/gwrc/> (select theme Natural Resources Plan) and can be accessed from the Council offices or public library.

Groundwater community drinking water supply protection areas - Wairarapa (incorporates Schedule M2)

Map 40



- Groundwater supply well
- State Highway
- Groundwater supply protection area

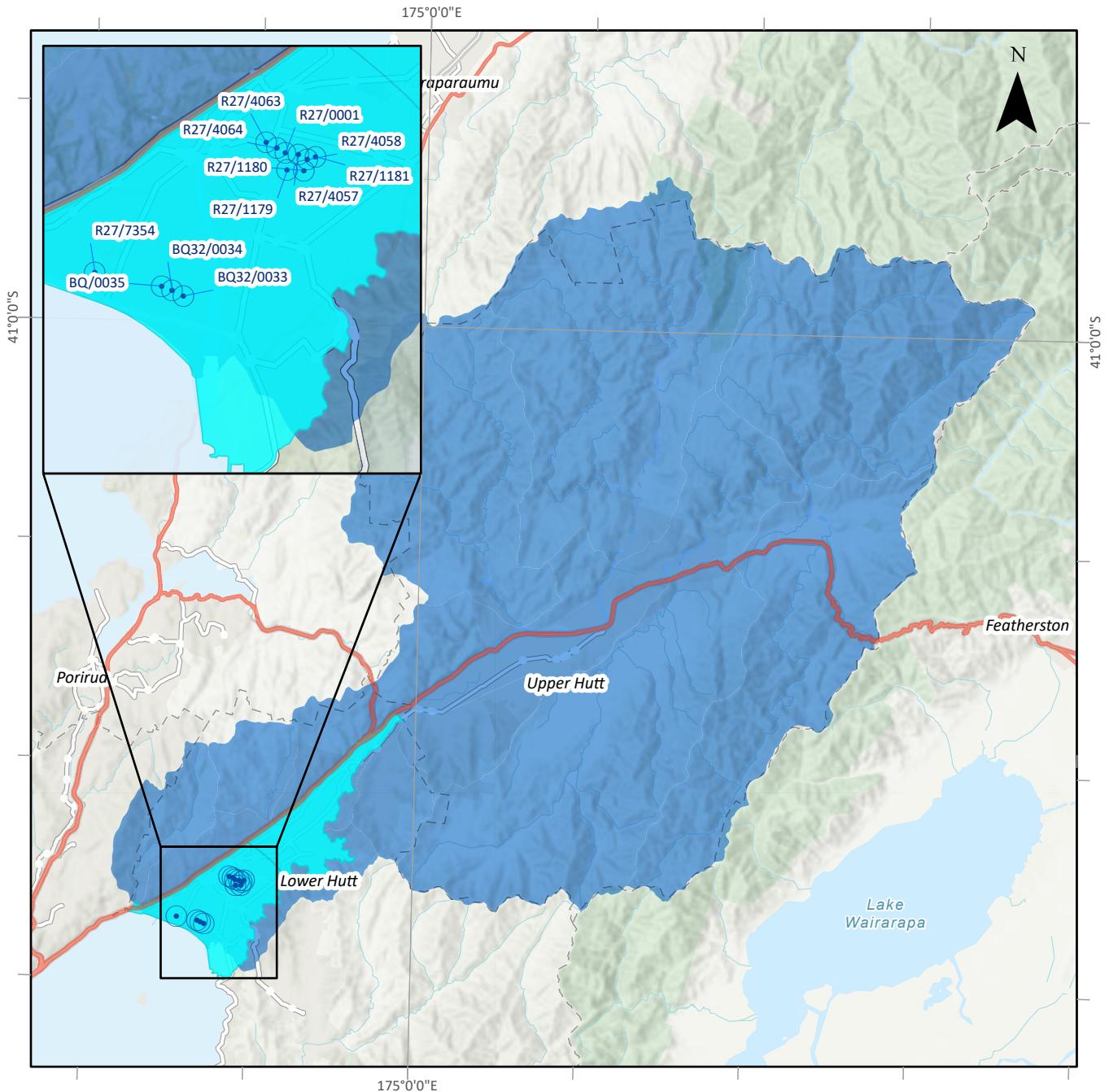






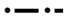
1:170,000

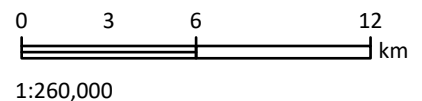
This version of the map is not complete. The version of this map available online through the online web map viewer shows the complete, detailed information on a GIS overlay that is not shown on this hard copy. The online version is available on the Council's website at <https://mapping.gw.govt.nz/gwrc/> (select theme Natural Resources Plan) and can be accessed from the Council offices or public library.

Groundwater community drinking water supply protection areas - Hutt Valley (incorporates Schedule M2)

Map 41



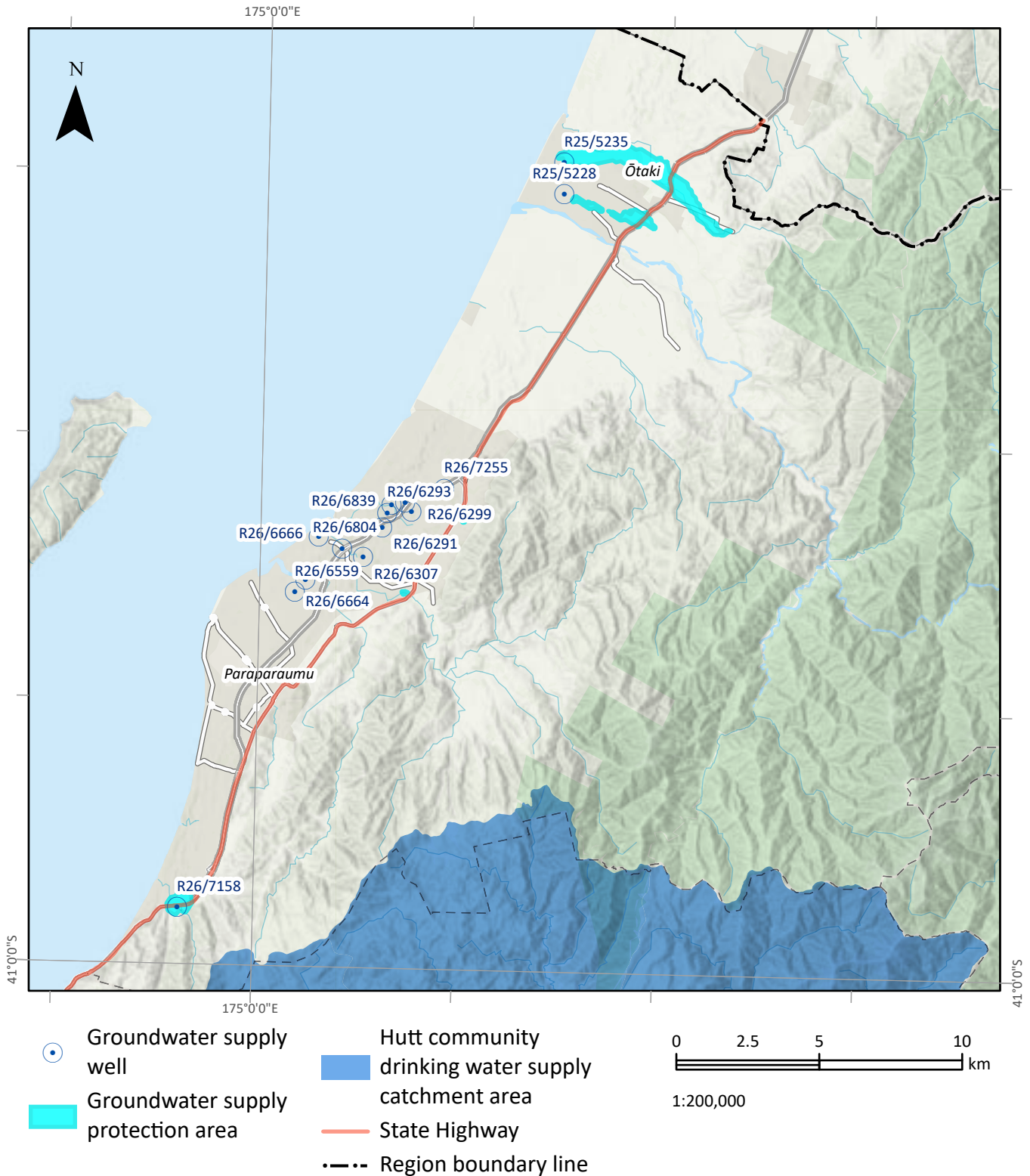
-  Groundwater supply well
-  Groundwater supply protection area
-  Hutt community drinking water supply catchment area
-  State Highway
-  Region boundary line



This version of the map is not complete. The version of this map available online through the online web map viewer shows the complete, detailed information on a GIS overlay that is not shown on this hard copy. The online version is available on the Council's website at <https://mapping.gw.govt.nz/gwrc/> (select theme Natural Resources Plan) and can be accessed from the Council offices or public library.

Groundwater community drinking water supply protection areas - Kāpiti Coast (incorporates Schedule M2)

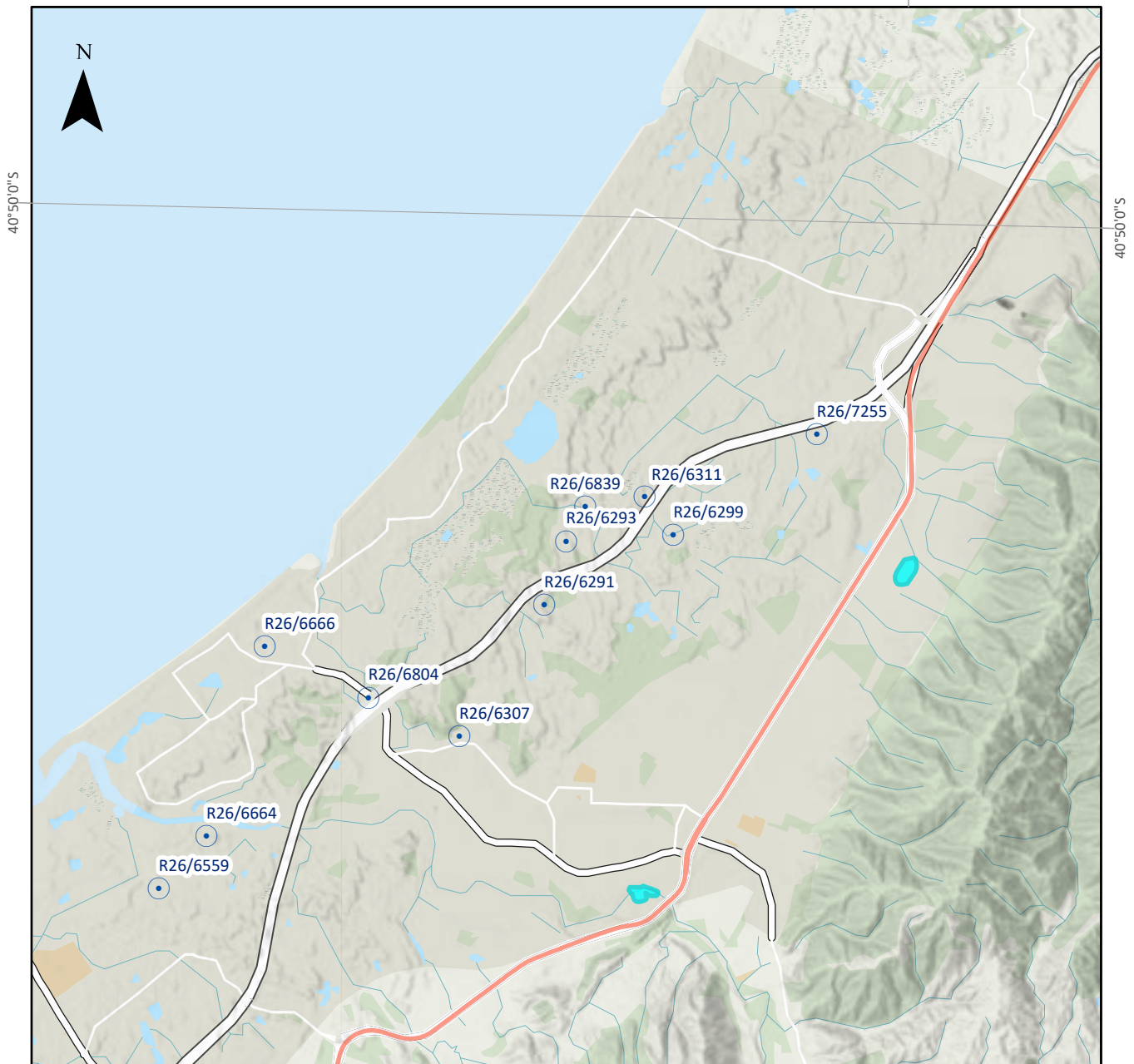
Map 42



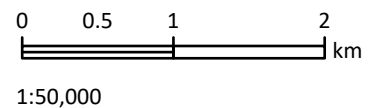
This version of the map is not complete. The version of this map available online through the online web map viewer shows the complete, detailed information on a GIS overlay that is not shown on this hard copy. The online version is available on the Council's website at <https://mapping.gw.govt.nz/gwrc/> (select theme Natural Resources Plan) and can be accessed from the Council offices or public library.

Groundwater community drinking water supply protection areas - Kāpiti Coast (incorporates Schedule M2)

Map 43



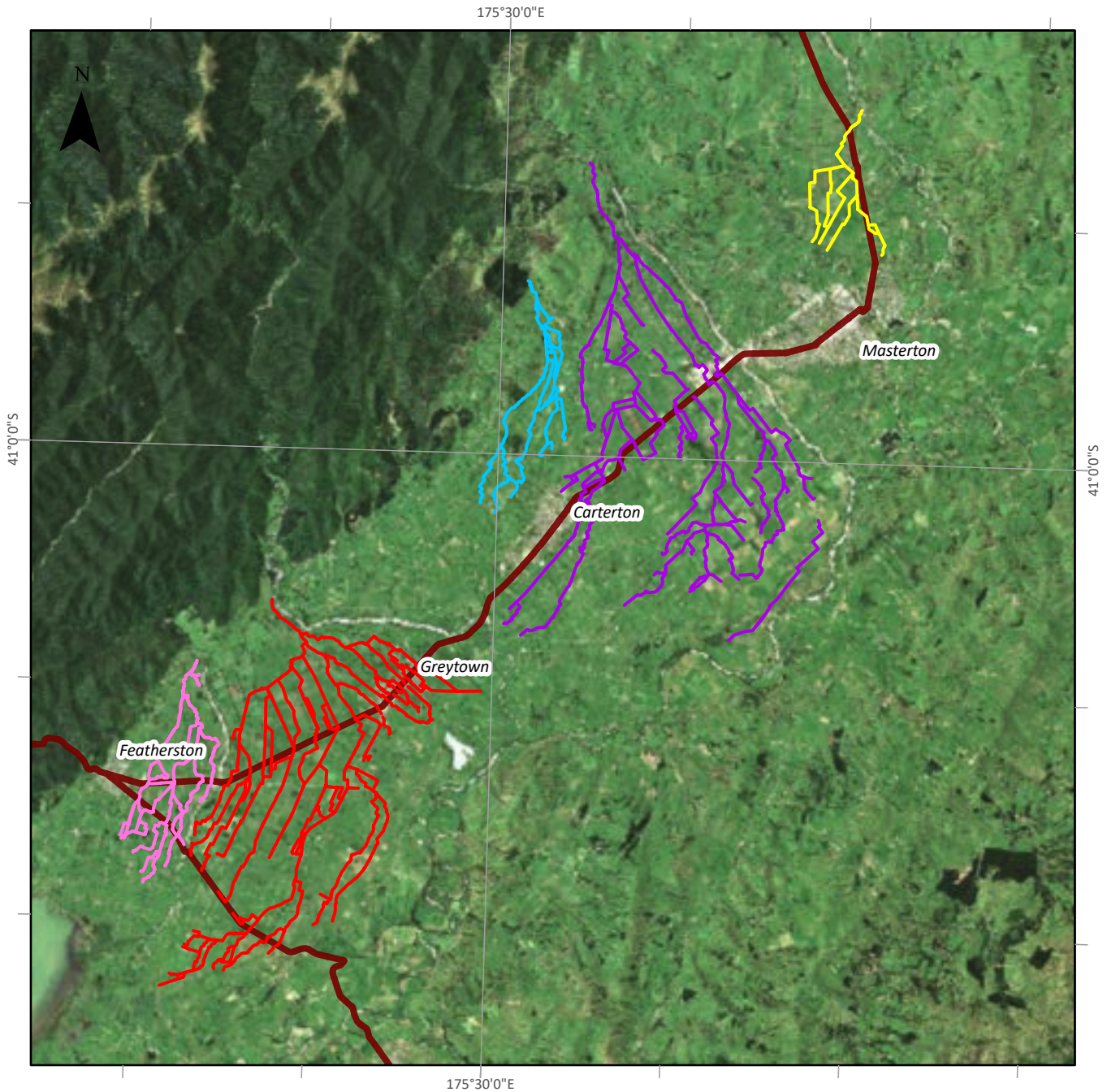
- Groundwater supply well
- Groundwater supply protection area
- State Highway



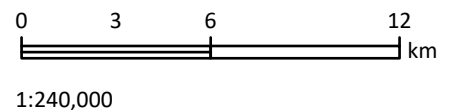
This version of the map is not complete. The version of this map available online through the online web map viewer shows the complete, detailed information on a GIS overlay that is not shown on this hard copy. The online version is available on the Council's website at <https://mapping.gw.govt.nz/gwrc/> (select theme Natural Resources Plan) and can be accessed from the Council offices or public library.

Water races in the Wairarapa

Map 44



- Carrington
- Longwood
- Moroa
- Opaki
- Taratahi



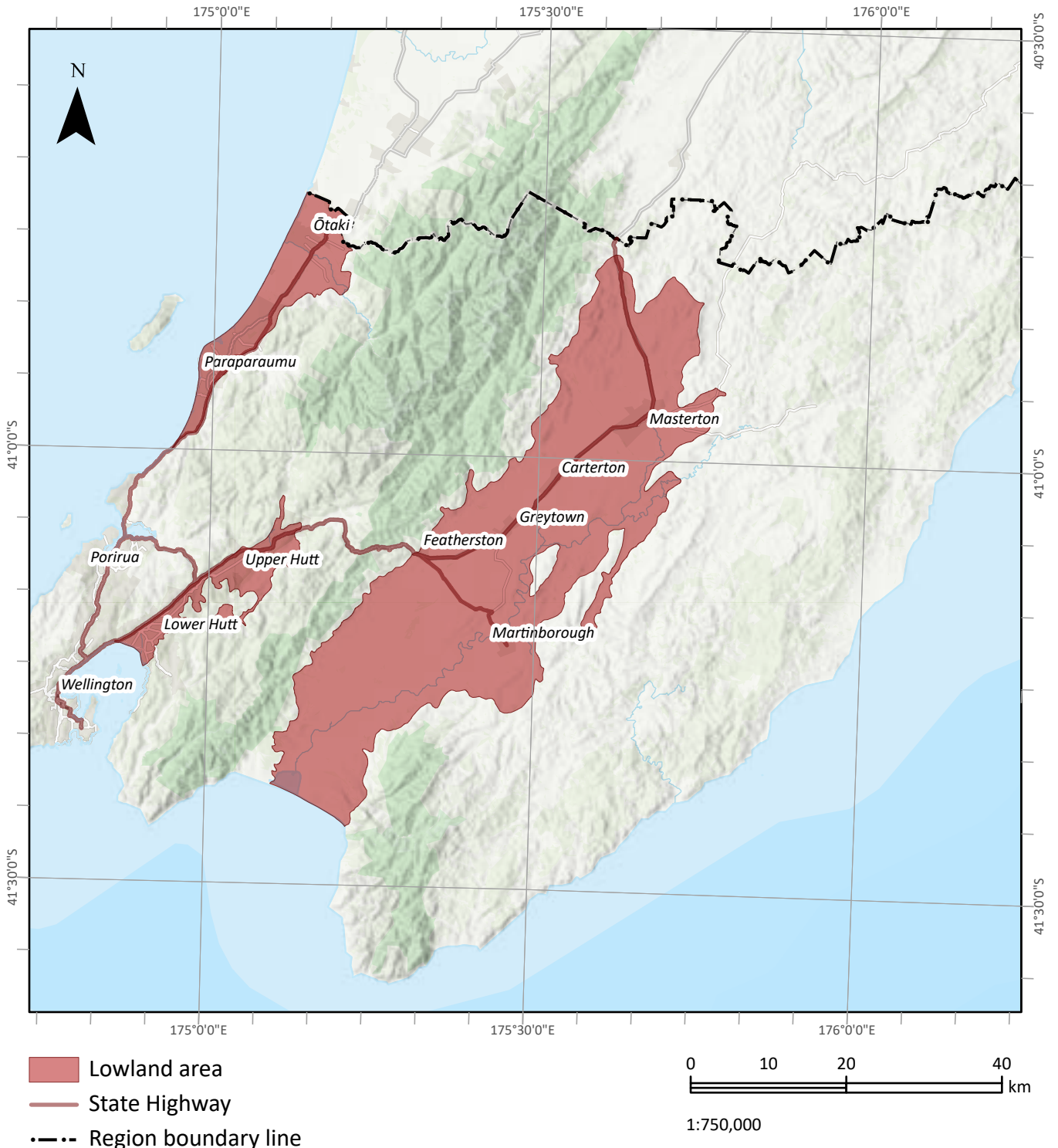
This version of the map is not complete. The version of this map available online through the online web map viewer shows the complete, detailed information on a GIS overlay that is not shown on this hard copy. The online version is available on the Council's website at <https://mapping.gw.govt.nz/gwrc/> (select theme Natural Resources Plan) and can be accessed from the Council offices or public library.

Copyright
Basemap: GWRC & LINZ
Topographic & Cadastral: LINZ, CoreLogic
Projection: NZTM 2000



Lowland areas for Category 2 surface water bodies

Map 45

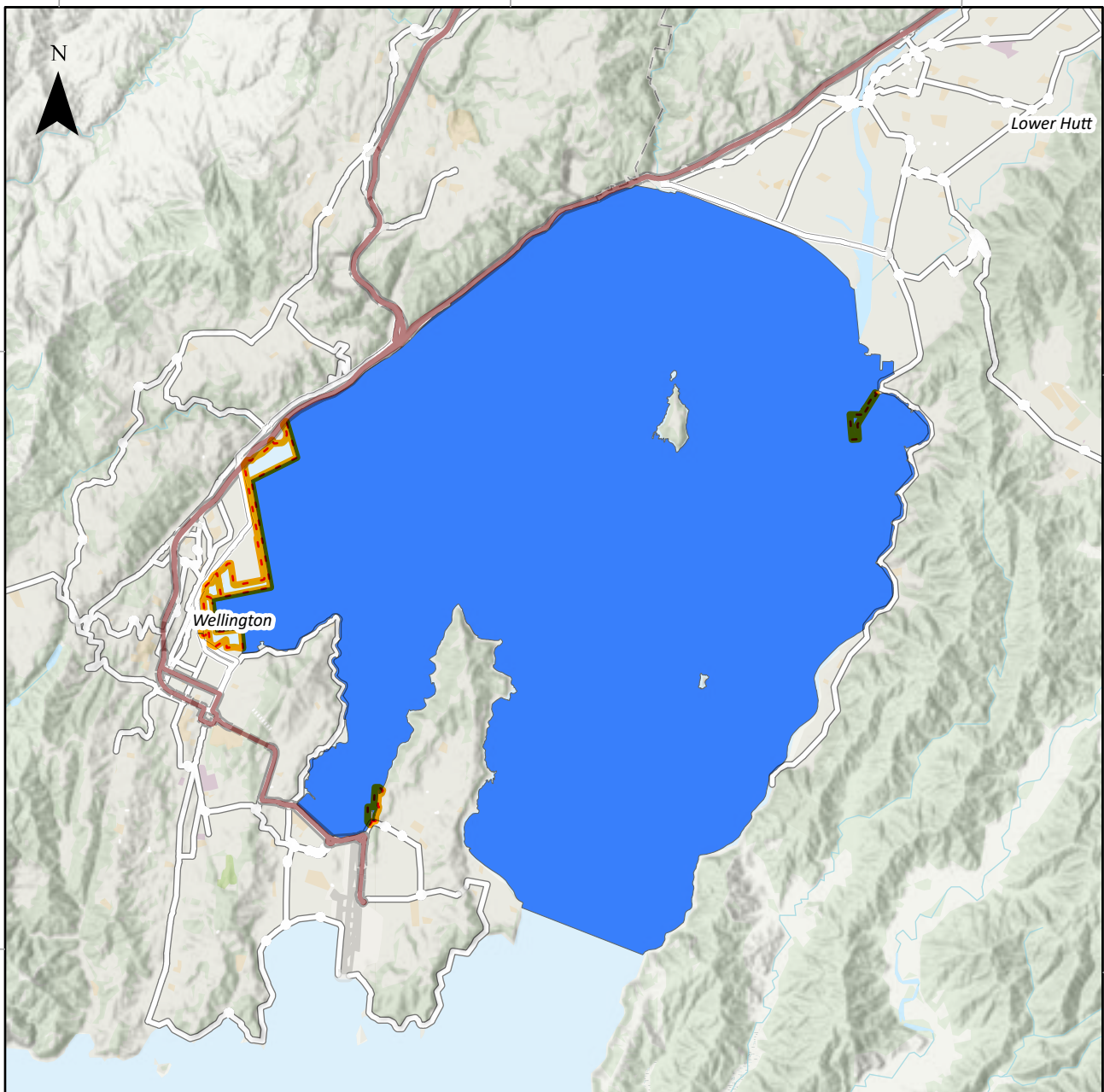


This version of the map is not complete. The version of this map available online through the online web map viewer shows the complete, detailed information on a GIS overlay that is not shown on this hard copy. The online version is available on the Council's website at <https://mapping.gw.govt.nz/gwrc/> (select theme Natural Resources Plan) and can be accessed from the Council offices or public library.

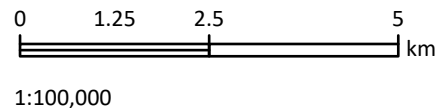
Hutt Valley aquifer protection zone in Wellington Harbour (Port Nicholson)



Map 46



- Hutt Aquifer Protection Zone (Wellington Harbour)
- State Highway
- Region boundary line
- Commercial Port Area Boundary

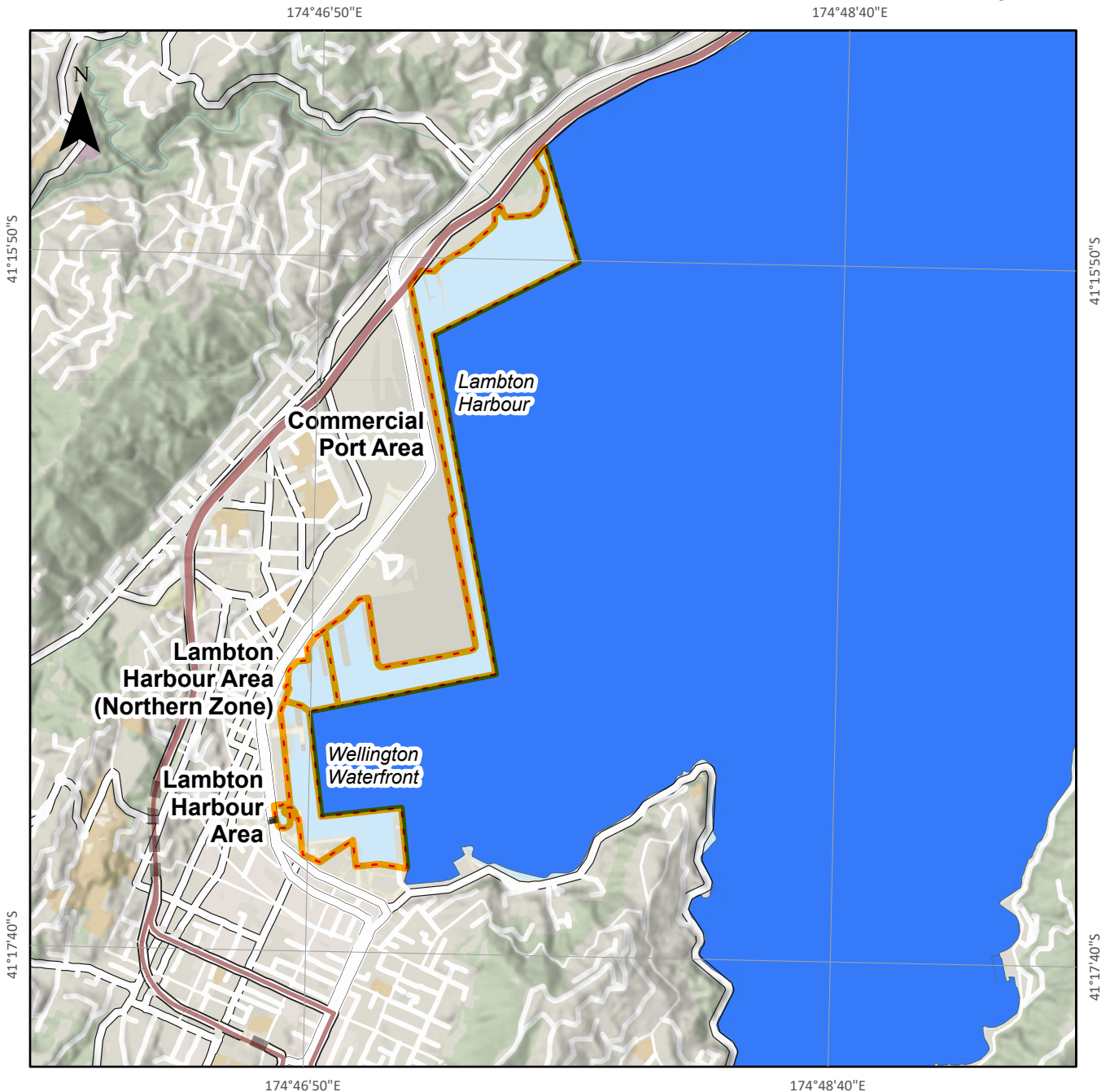




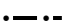
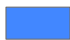
This version of the map is not complete. The version of this map available online through the online web map viewer shows the complete, detailed information on a GIS overlay that is not shown on this hard copy. The online version is available on the Council's website at <https://mapping.gw.govt.nz/gwrc/> (select theme Natural Resources Plan) and can be accessed from the Council offices or public library.

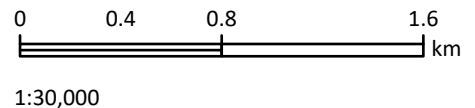
Boundary between Hutt Valley aquifer zone and Commercial Port areas in Wellington Harbour (Port Nicholson)



Map 47



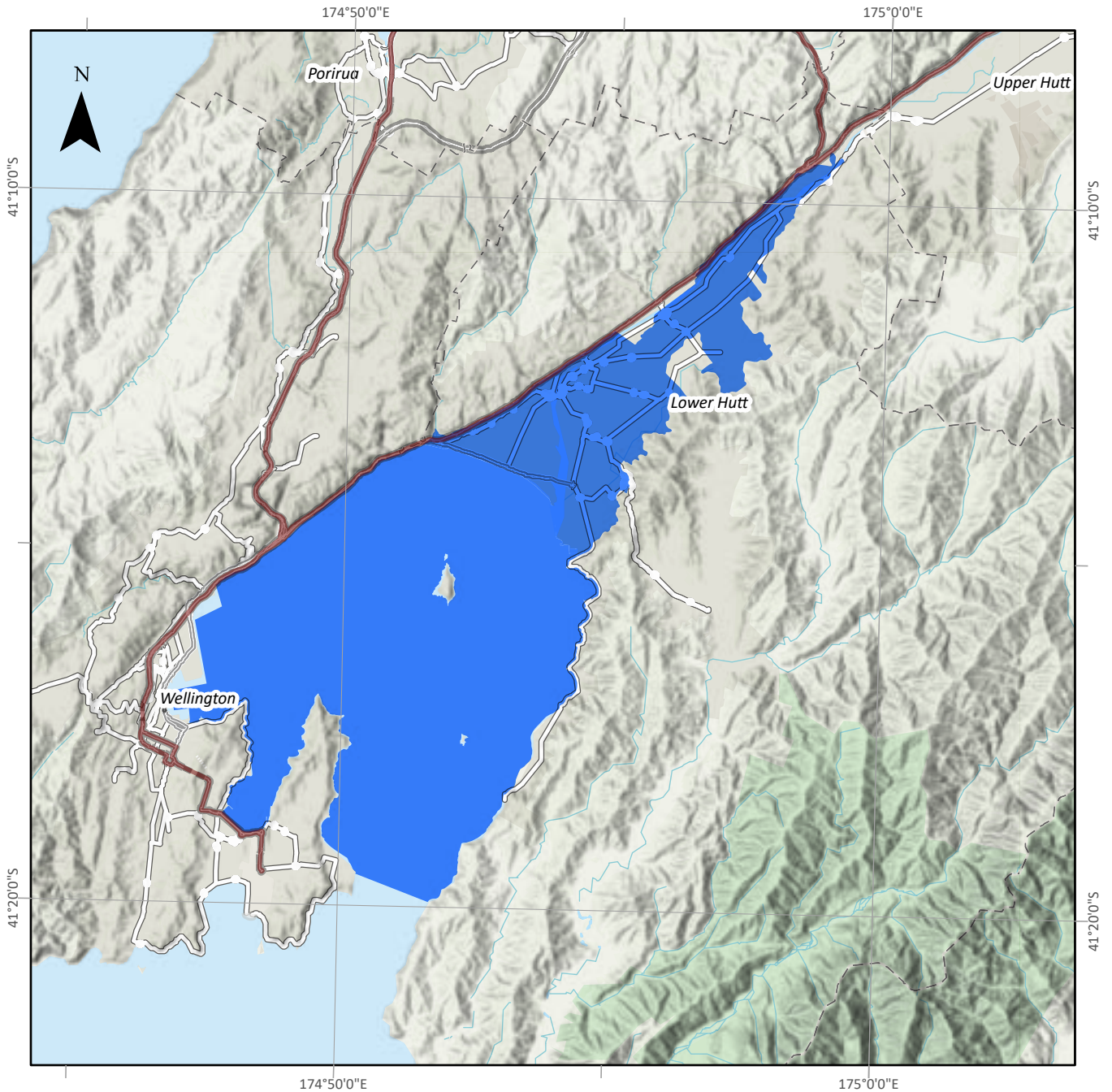
-  Commercial Port Area Boundary
-  State Highway
-  Region boundary line
-  Hutt Aquifer Protection Zone (Wellington Harbour)



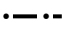


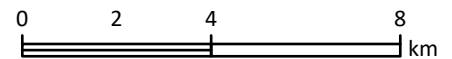
This version of the map is not complete. The version of this map available online through the online web map viewer shows the complete, detailed information on a GIS overlay that is not shown on this hard copy. The online version is available on the Council's website at <https://mapping.gw.govt.nz/gwrc/> (select theme Natural Resources Plan) and can be accessed from the Council offices or public library.

Hutt Valley Aquifer Protection Zone

Map 48



-  Hutt Aquifer Protection Zone
-  State Highway
-  Region boundary line

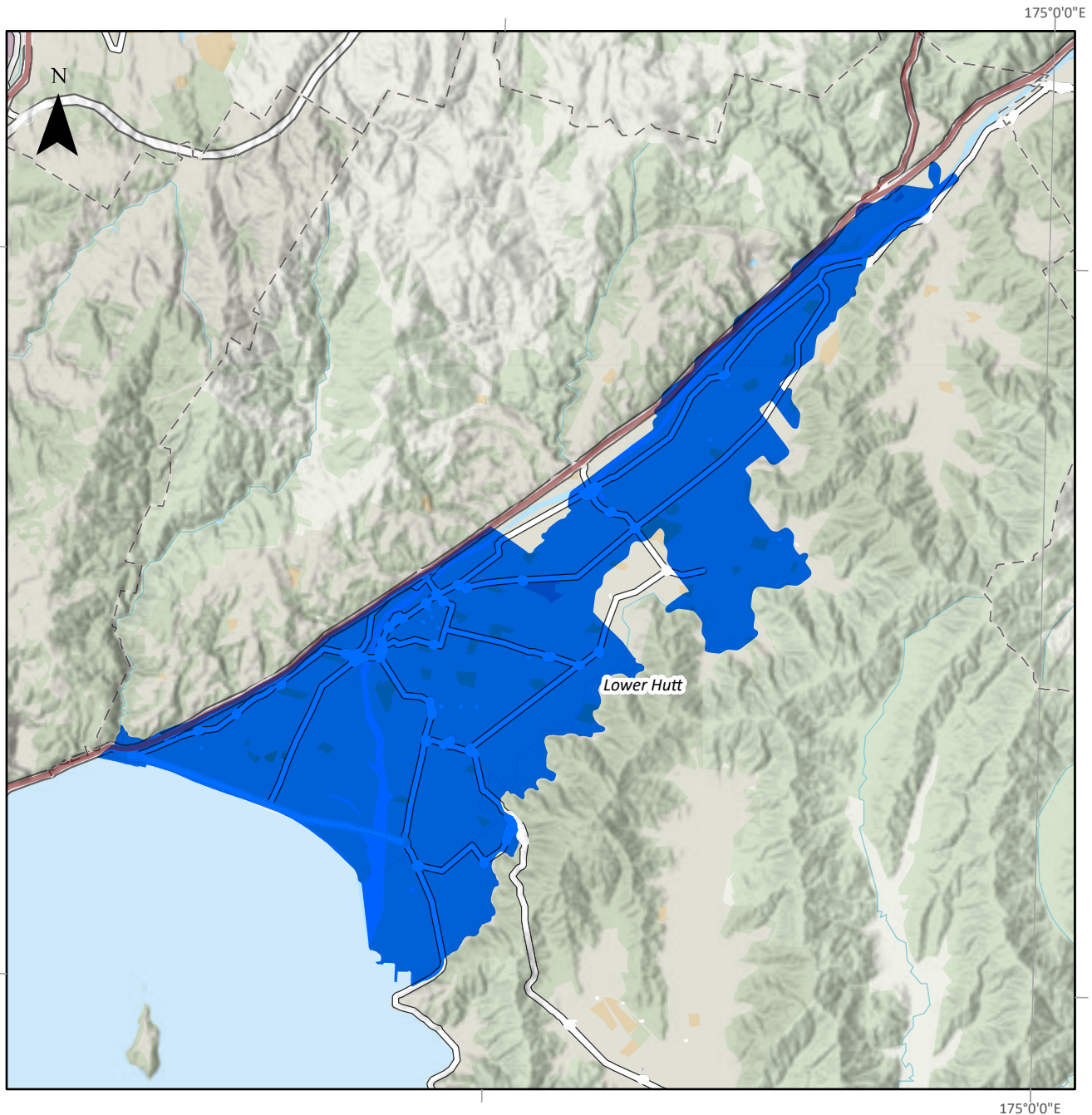




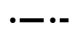
1:160,000

This version of the map is not complete. The version of this map available online through the online web map viewer shows the complete, detailed information on a GIS overlay that is not shown on this hard copy. The online version is available on the Council's website at <https://mapping.gw.govt.nz/gwrc/> (select theme Natural Resources Plan) and can be accessed from the Council offices or public library.

Hutt Valley Aquifer Protection Zone in Hutt Valley

Map 49



-  Hutt Aquifer Protection Zone
-  State Highway
-  Region boundary line

0 1 2 4 km
1:80,000

This version of the map is not complete. The version of this map available online through the online web map viewer shows the complete, detailed information on a GIS overlay that is not shown on this hard copy. The online version is available on the Council's website at <https://mapping.gw.govt.nz/gwrc/> (select theme Natural Resources Plan) and can be accessed from the Council offices or public library.