

Boatshed management areas

Map 50



Figure 31.1

Camborne Boatsheds

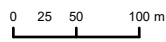


Figure 31.2

Paremata Boatsheds

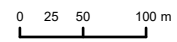


Figure 31.3

Onepoto Boatshed

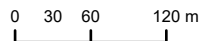


Figure 31.4

Evans Bay Boatsheds

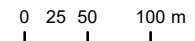
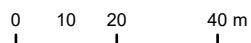





Figure 31.5

Skerrett Boatshed



This version of the map is not complete. The version of this map available online through the online web map viewer shows the complete, detailed information on a GIS overlay that is not shown on this hard copy. The online version is available on the Council's website at <https://mapping.gw.govt.nz/gwrc/> (select theme Natural Resources Plan) and can be accessed from the Council offices or public library.

-  Boatshed
-  Management Area
-  State Highway

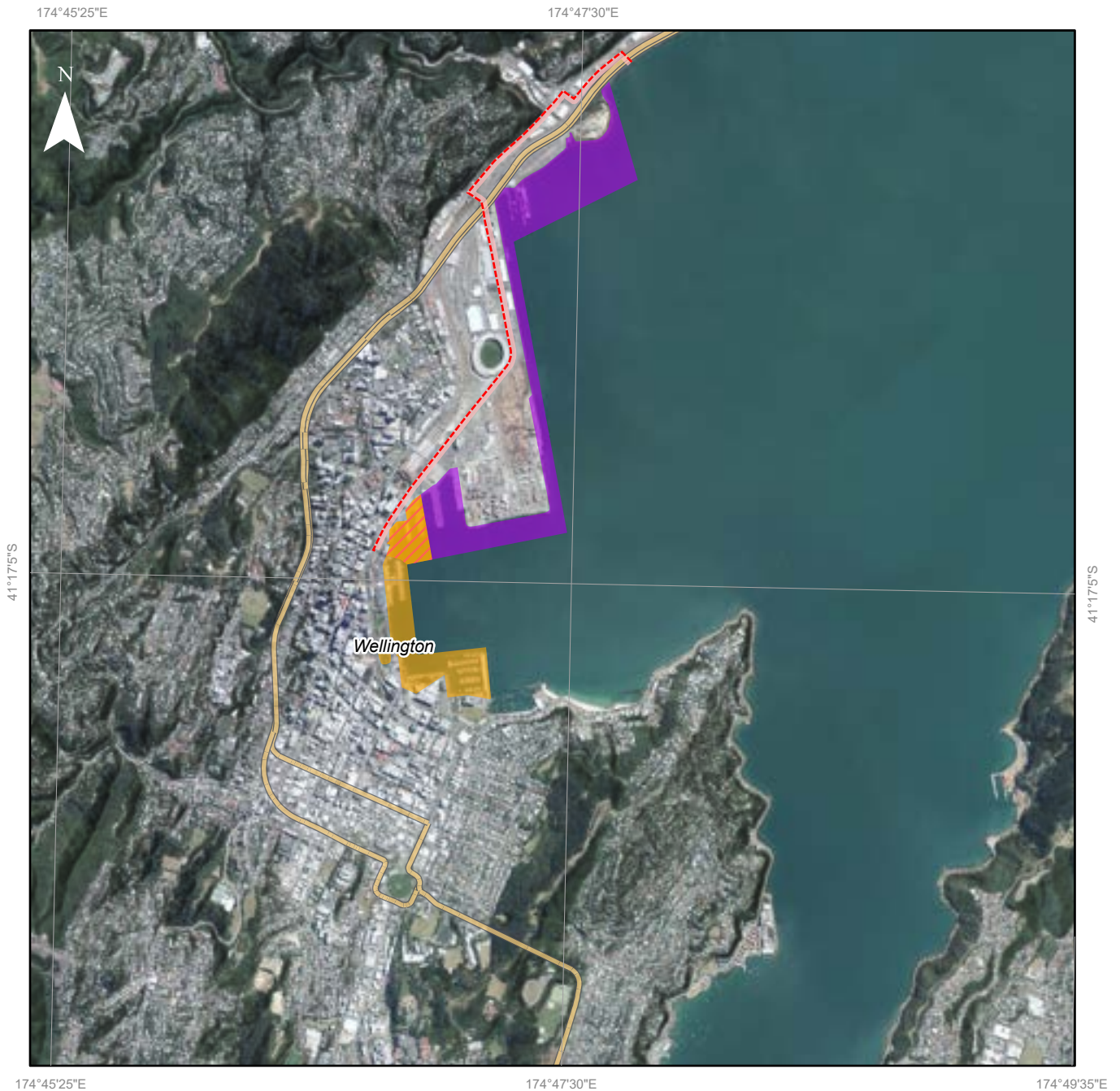


Basemap: GWRC Orthophotos 2012-13
 Topographic & Cadastral: LINZ, CoreLogic
 Projection: NZTM 2000
 CC By 4.0

Commercial Port Area, Lambton Harbour Area and noise control line - Lambton Harbour

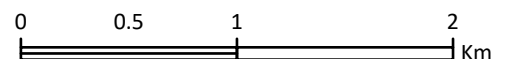


Map 51



- Commercial Port Area
- Lambton Harbour Area
- Lambton Harbour Area (Northern Zone)

- Port noise control line
- State Highway






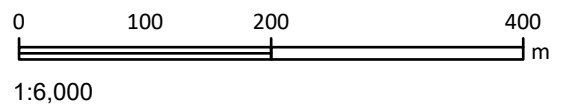
1:35,000

This version of the map is not complete. The version of this map available online through the online web map viewer shows the complete, detailed information on a GIS overlay that is not shown on this hard copy. The online version is available on the Council's website at <https://mapping.gw.govt.nz/gwrc/> (select theme Natural Resources Plan) and can be accessed from the Council offices or public library.

Commercial Port Area and Port noise control line – Miramar and Burnham Wharves Map 52



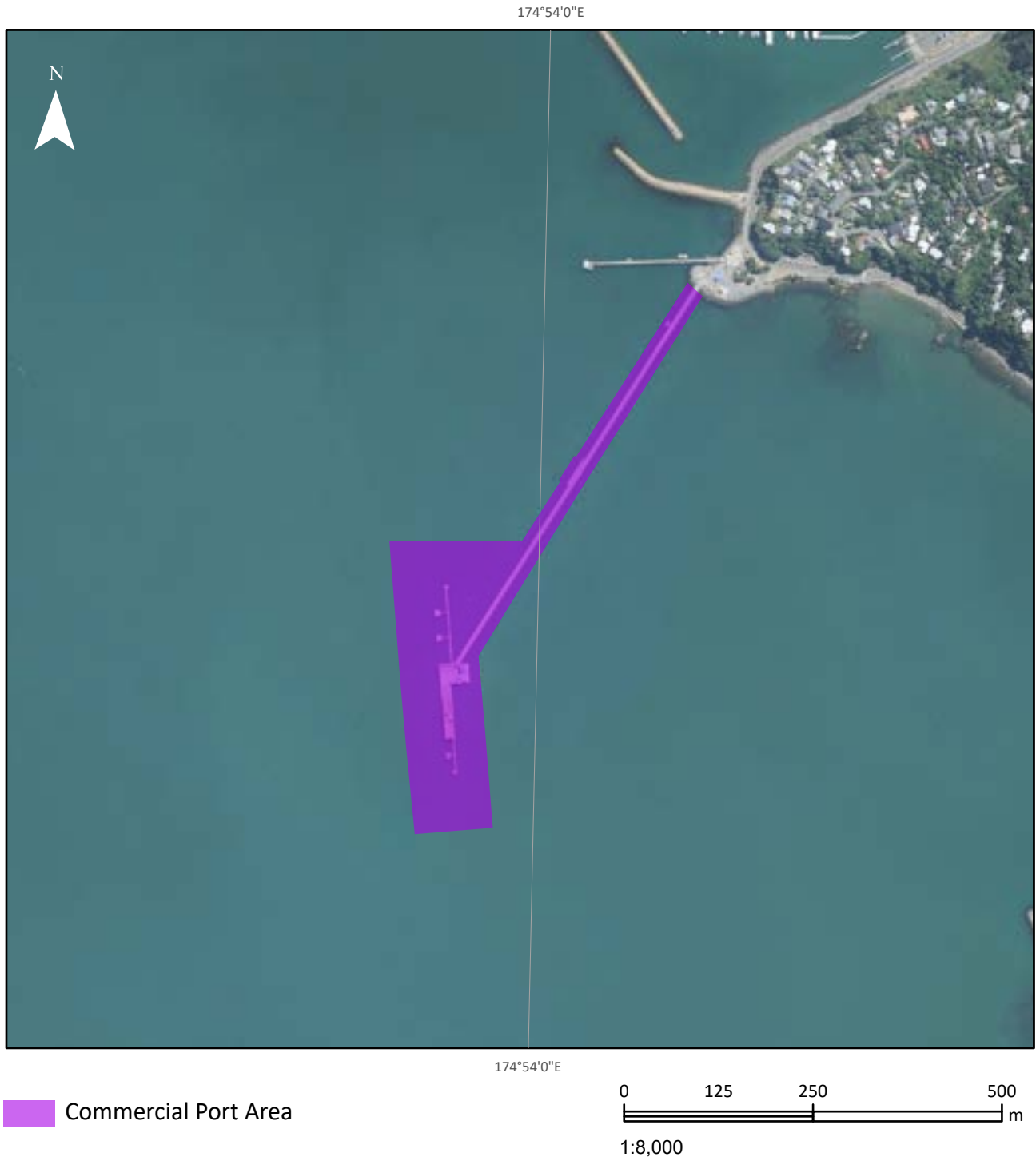
-  Commercial Port Area
-  Port noise control line
-  State Highway



This version of the map is not complete. The version of this map available online through the online web map viewer shows the complete, detailed information on a GIS overlay that is not shown on this hard copy. The online version is available on the Council's website at <https://mapping.gw.govt.nz/gwrc/> (select theme Natural Resources Plan) and can be accessed from the Council offices or public library.

Commercial Port Area - Seaview Wharf

Map 53

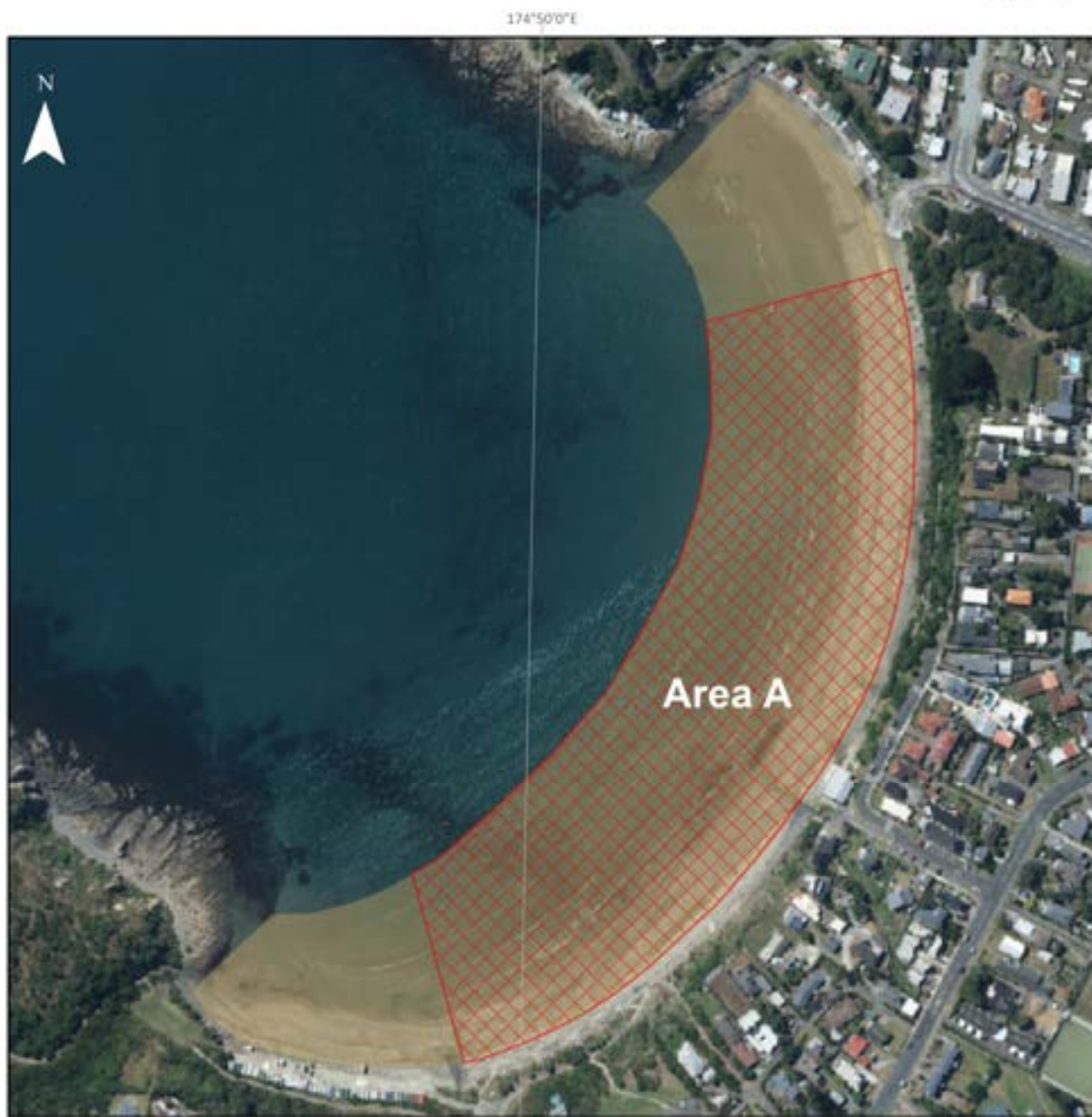


This version of the map is not complete. The version of this map available online through the online web map viewer shows the complete, detailed information on a GIS overlay that is not shown on this hard copy. The online version is available on the Council's website at <https://mapping.gw.govt.nz/gwrc/> (select theme Natural Resources Plan) and can be accessed from the Council offices or public library.

Tītahi Bay fossil forest



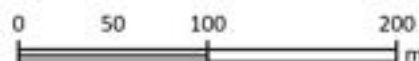
Map 54



Area A



Tītahi Bay fossil forest



1:4,000

The version of this map available online through the online web map viewer shows the complete, detailed information on a GIS overlay. The online version is available on the Council's website at <https://mapping.gw.govt.nz/gwrc/> (select theme Natural Resources Plan) and can be accessed from the Council offices or public library.

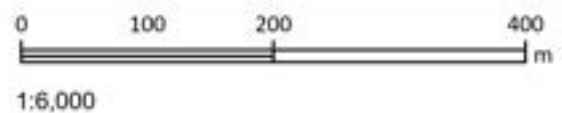
Mooring areas Wellington Harbour (Port Nicholson) - Evans Bay



Map 55



- Bearing point
- Sight line
- Mooring area



This version of the map is not complete. The version of this map available online through the online web map viewer shows the complete, detailed information on a GIS overlay that is not shown on this hard copy. The online version is available on the Council's website at <https://mapping.gw.govt.nz/gwrc/> (select theme Natural Resources Plan) and can be accessed from the Council offices or public library.

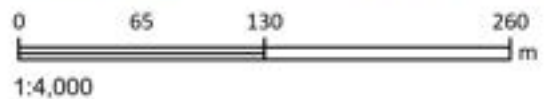
Mooring areas Wellington Harbour (Port Nicholson) - Whiorau/Lowry Bay



Map 56



- Bearing point
- Sight line
- Mooring area



This version of the map is not complete. The version of this map available online through the online web map viewer shows the complete, detailed information on a GIS overlay that is not shown on this hard copy. The online version is available on the Council's website at <https://mapping.gw.govt.nz/gwrc/> (select theme Natural Resources Plan) and can be accessed from the Council offices or public library.

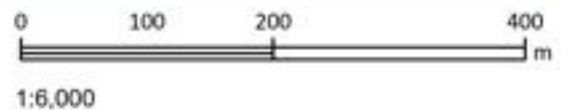
Mooring areas Island Bay



Map 57



- Bearing point
- Sight line
- Mooring area



This version of the map is not complete. The version of this map available online through the online web map viewer shows the complete, detailed information on a GIS overlay that is not shown on this hard copy. The online version is available on the Council's website at <https://mapping.gw.govt.nz/gwrc/> (select theme Natural Resources Plan) and can be accessed from the Council offices or public library.

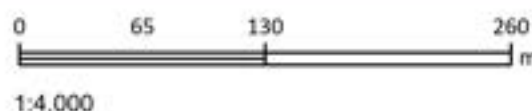
Mooring areas Te Awarua-o-Porirua Harbour - Onepoto



Map 58



- Bearing point
- Sight line
- Mooring area






This version of the map is not complete. The version of this map available online through the online web map viewer shows the complete, detailed information on a GIS overlay that is not shown on this hard copy. The online version is available on the Council's website at <https://mapping.gw.govt.nz/gwrc/> (select theme Natural Resources Plan) and can be accessed from the Council offices or public library.

Mooring areas Te Awarua-o-Porirua Harbour - Mana



Map 59



-  Bearing point
-  Sight line
-  Mooring area



This version of the map is not complete. The version of this map available online through the online web map viewer shows the complete, detailed information on a GIS overlay that is not shown on this hard copy. The online version is available on the Council's website at <https://mapping.gw.govt.nz/gwrc/> (select theme Natural Resources Plan) and can be accessed from the Council offices or public library.

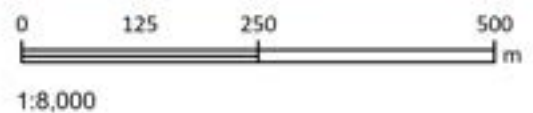
Mooring areas Te Awarua-o-Porirua Harbour - Pauatahanui Arm



Map 60



- Bearing point
- Sight line
- Mooring area



This version of the map is not complete. The version of this map available online through the online web map viewer shows the complete, detailed information on a GIS overlay that is not shown on this hard copy. The online version is available on the Council's website at <https://mapping.gw.govt.nz/gwrc/> (select theme Natural Resources Plan) and can be accessed from the Council offices or public library.

Coastal marine area and river mouth boundaries



Maps 61 to 67 show where the coastal marine area and river mouth boundaries are located. For the remaining rivers in the Wellington Region not shown on Maps 42 to 48, the mouth is deemed to be a straight line representing the continuation of the line of mean high water springs on each side of the river at the river outlet.

The coastal marine area means the foreshore, seabed, and coastal water, and the air space above the water—

(a) of which the seaward boundary is the outer limits of the territorial sea:

(b) of which the landward boundary is the line of mean high water springs, except that where that line crosses a river, the landward boundary at that point shall be whichever is the lesser of—

(i) 1 kilometre upstream from the mouth of the river; or

(ii) the point upstream that is calculated by multiplying the width of the river mouth by 5

Map 61



Waitohu Stream

0 30 60 120 m



Ōtaki River

0 130 260 520 m



Waimeha Stream

0 15 30 60 m



Waikanae River

0 62.5 125 250 m



— Coastal marine area

— River mouth

This version of the map is not complete. The version of this map available online through the online web map viewer shows the complete, detailed information on a GIS overlay that is not shown on this hard copy. The online version is available on the Council's website at <https://mapping.gw.govt.nz/gwrc/> (select theme Natural Resources Plan) and can be accessed from the Council offices or public library.

Copyright

Basemap: GWRC & LINZ (2013 Aerial imagery)

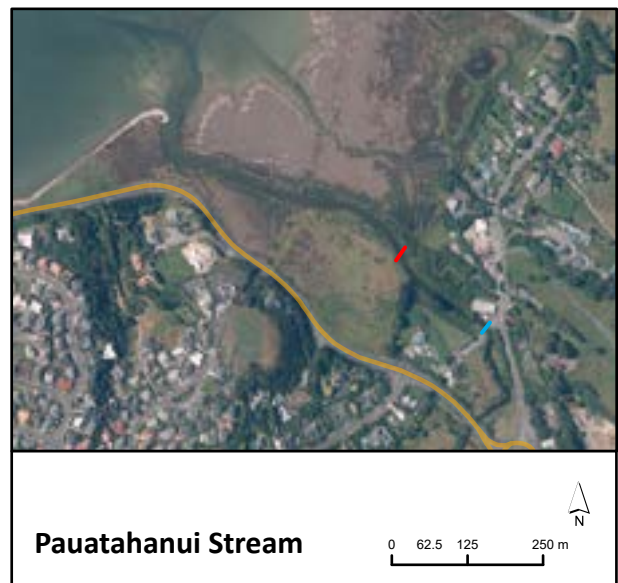
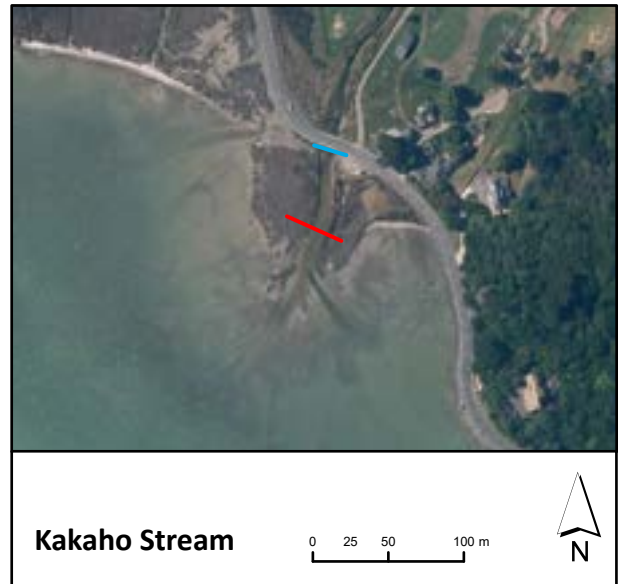
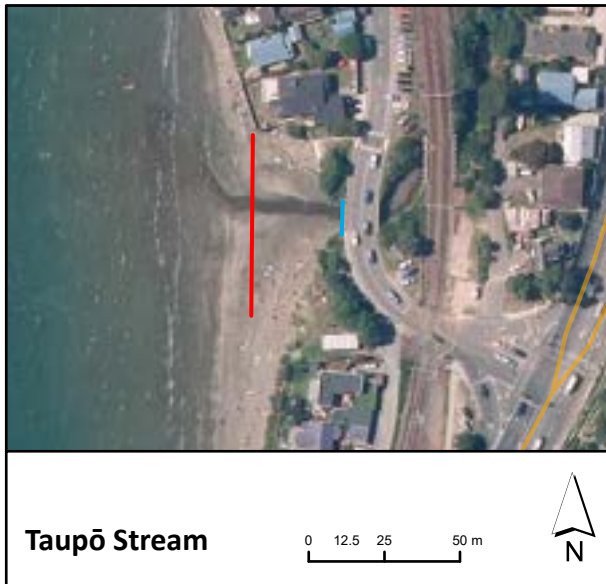
Topographic & Cadastral: LINZ, CoreLogic

Projection: NZTM 2000



Coastal marine area and river mouth boundaries

Map 62

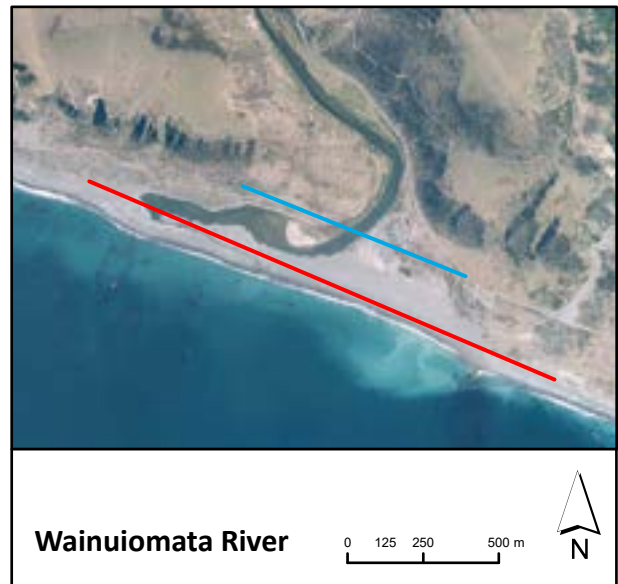
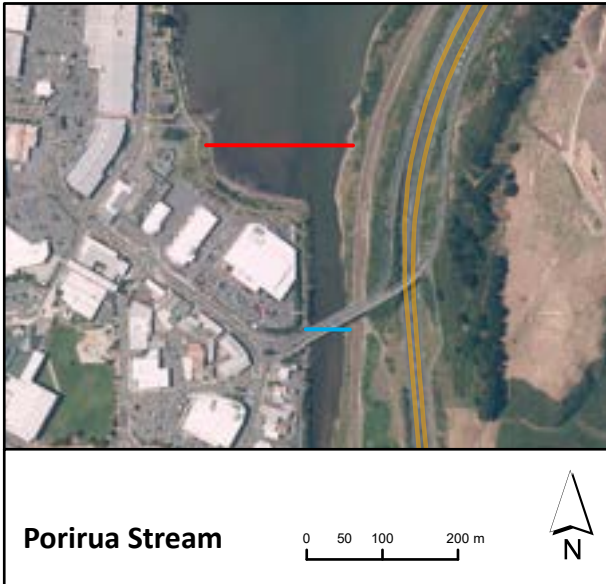


- Coastal marine area
- State Highway
- River mouth

This version of the map is not complete. The version of this map available online through the online web map viewer shows the complete, detailed information on a GIS overlay that is not shown on this hard copy. The online version is available on the Council's website at <https://mapping.gw.govt.nz/gwrc/> (select theme Natural Resources Plan) and can be accessed from the Council offices or public library.

Coastal marine area and river mouth boundaries

Map 63

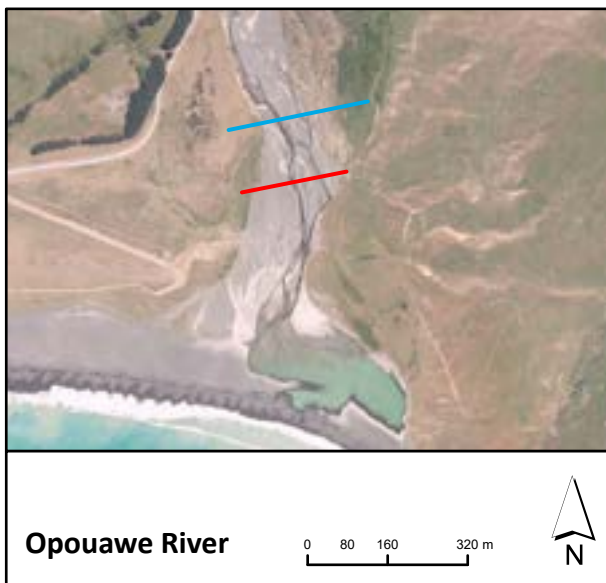
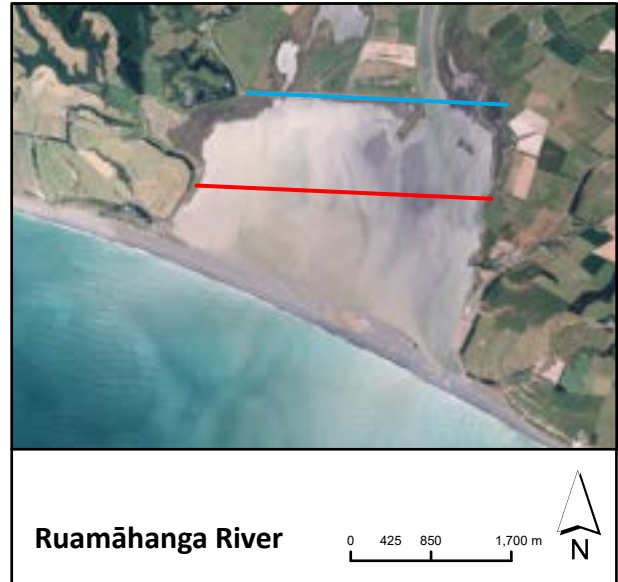


- Coastal marine area
- State Highway
- River mouth

This version of the map is not complete. The version of this map available online through the online web map viewer shows the complete, detailed information on a GIS overlay that is not shown on this hard copy. The online version is available on the Council's website at <https://mapping.gw.govt.nz/gwrc/> (select theme Natural Resources Plan) and can be accessed from the Council offices or public library.

Coastal marine area and river mouth boundaries

Map 64



- Coastal marine area
- River mouth

This version of the map is not complete. The version of this map available online through the online web map viewer shows the complete, detailed information on a GIS overlay that is not shown on this hard copy. The online version is available on the Council's website at <https://mapping.gw.govt.nz/gwrc/> (select theme Natural Resources Plan) and can be accessed from the Council offices or public library.

Coastal marine area and river mouth boundaries

Map 65

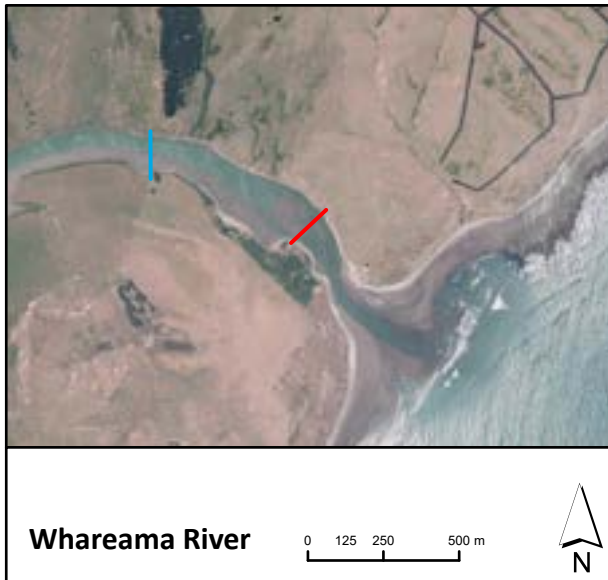


- Coastal marine area
- River mouth

This version of the map is not complete. The version of this map available online through the online web map viewer shows the complete, detailed information on a GIS overlay that is not shown on this hard copy. The online version is available on the Council's website at <https://mapping.gw.govt.nz/gwrc/> (select theme Natural Resources Plan) and can be accessed from the Council offices or public library.

Coastal marine area and river mouth boundaries

Map 66



- Coastal marine area
- River mouth

This version of the map is not complete. The version of this map available online through the online web map viewer shows the complete, detailed information on a GIS overlay that is not shown on this hard copy. The online version is available on the Council's website at <https://mapping.gw.govt.nz/gwrc/> (select theme Natural Resources Plan) and can be accessed from the Council offices or public library.

Coastal marine area and river mouth boundaries

Map 67



— Coastal marine area

— River mouth

This version of the map is not complete. The version of this map available online through the online web map viewer shows the complete, detailed information on a GIS overlay that is not shown on this hard copy. The online version is available on the Council's website at <https://mapping.gw.govt.nz/gwrc/> (select theme Natural Resources Plan) and can be accessed from the Council offices or public library.

Copyright

Basemap: GWRC & LINZ (2013 Aerial imagery)

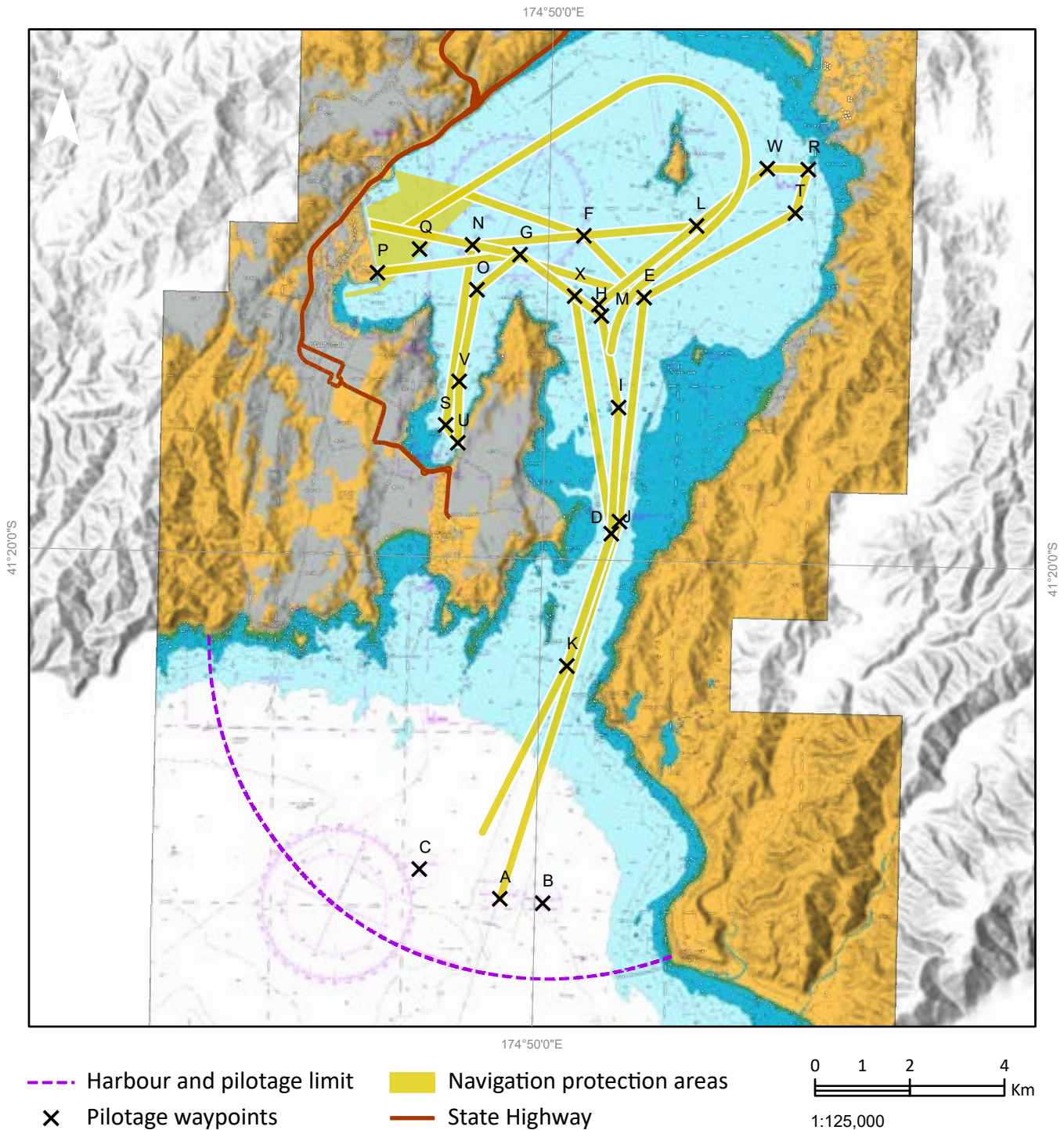
Topographic & Cadastral: LINZ, CoreLogic

Projection: NZTM 2000

Navigation protection areas in Wellington Harbour (Port Nicholson)



Map 68

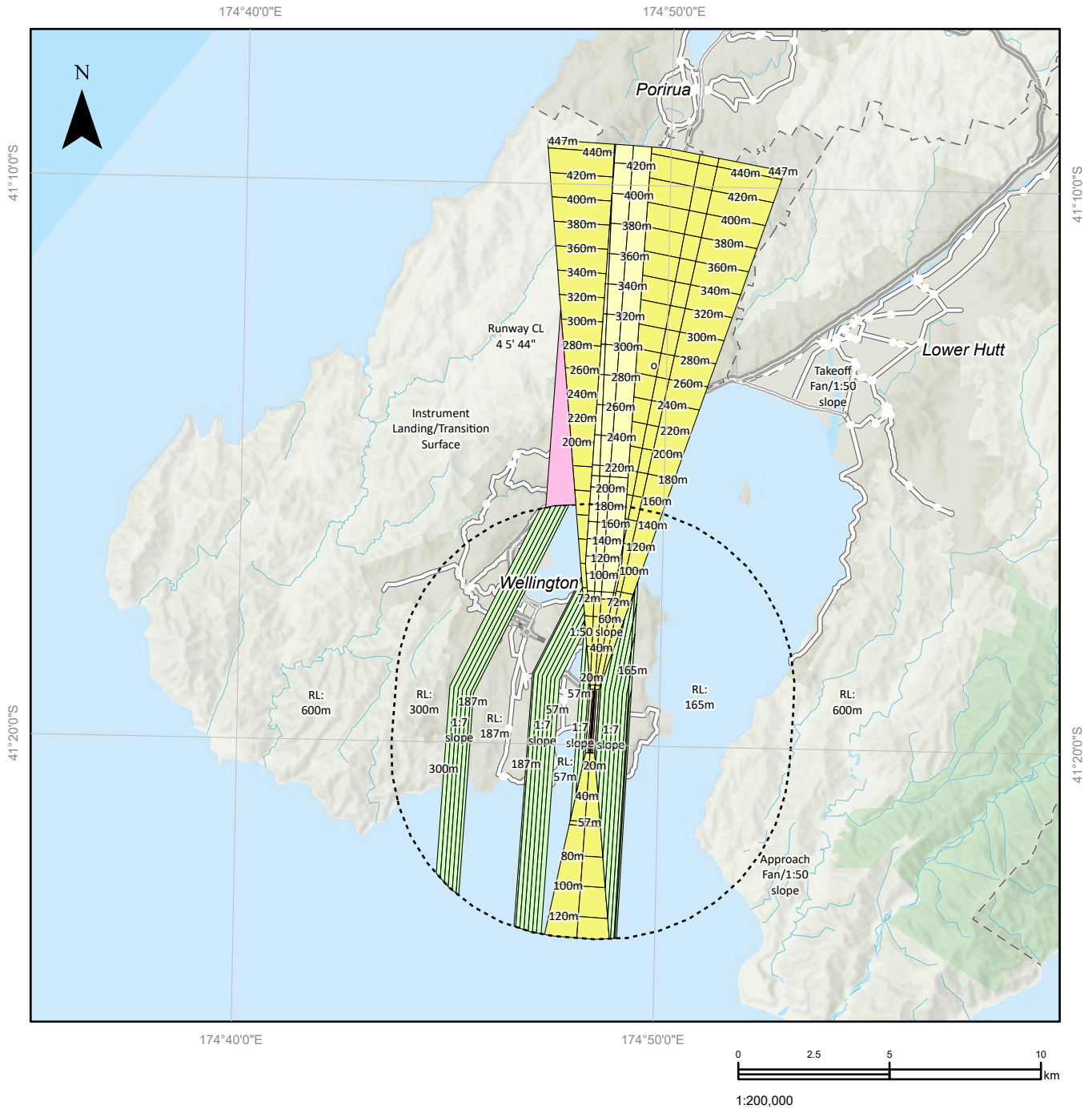


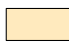
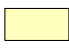
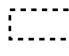


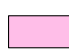
This version of the map is not complete. The version of this map available online through the online web map viewer shows the complete, detailed information on a GIS overlay that is not shown on this hard copy. The online version is available on the Council's website at <https://mapping.gw.govt.nz/gwrc/> (select theme Natural Resources Plan) and can be accessed from the Council offices or public library.

Wellington pilotage waypoints recommended for inbound and outbound commercial vessels. Shipping may deviate from these tracks for safe navigation at any time. Contact Wellington Regional Council, Harbours department for further information. Caution: This map not to be used for navigation.

Wellington International Airport height restrictions

Map 69

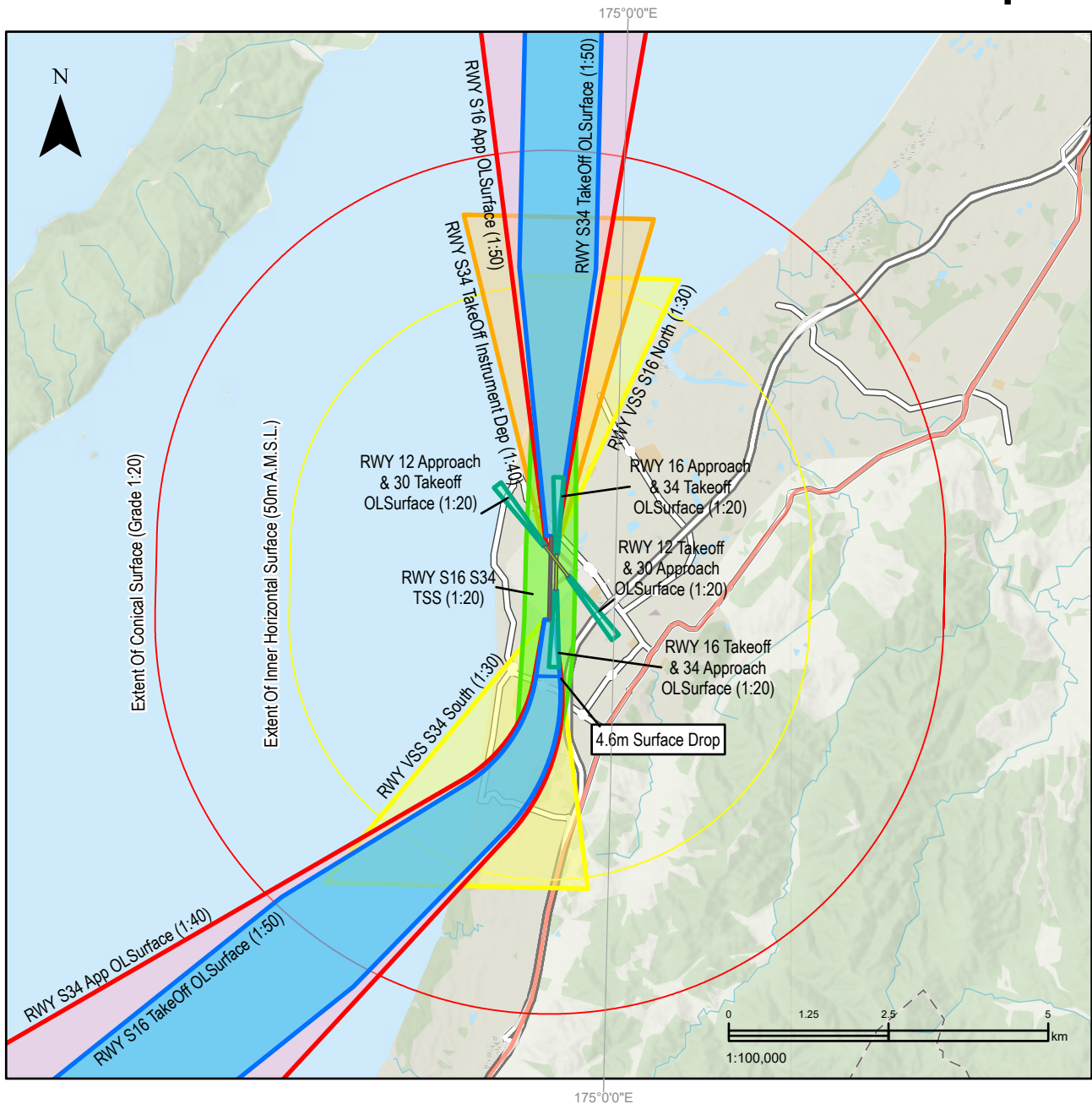


- | | | |
|---|---|--|
|  Runway strip and flyover Area |  Takeoff and approach fans (Inner Portion) |  Horizontal surface (Holding pattern) |
|  Takeoff and approach fans |  Transitional side surfaces |  Instrument landing transitional surface |

This version of the map is not complete. The version of this map available online through the online web map viewer shows the complete, detailed information on a GIS overlay that is not shown on this hard copy. The online version is available on the Council's website at <https://mapping.gw.govt.nz/gwrc/> (select theme Natural Resources Plan) and can be accessed from the Council offices or public library.

Kāpiti Coast Airport approach gradients

Map 70

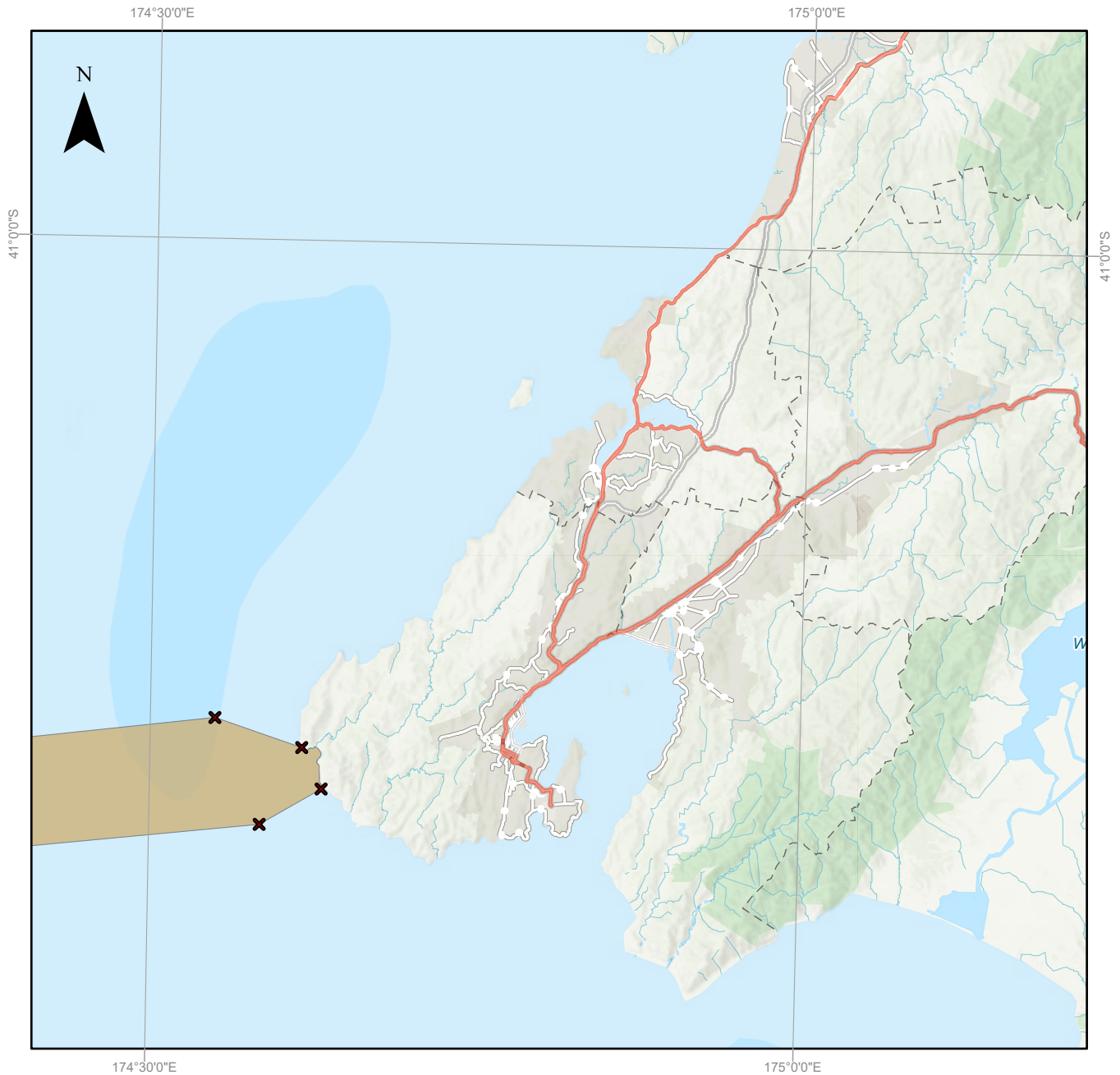






- | | | |
|--|---|--|
| Sealed Runway 16/34 | Sealed Runway 16/34 Take Off OLSurface | Sealed Runway 34 Take Off Instrument Departure Surface |
| Grass Runways 16/34 and 12/30 | Sealed Runway 16/34 Approach OLSurface | Sealed Runway 16/34 Visual Segment Surface |
| Grass Runway 16/34 and 12/30 Take Off and Approach OLSurface | Sealed Runway 16/34 Transitional Side Surface | Extent Of Conical Surface |
| | | Extent Of Inner Horizontal Surface |

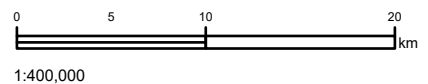
This version of the map is not complete. The version of this map available online through the online web map viewer shows the complete, detailed information on a GIS overlay that is not shown on this hard copy. The online version is available on the Council's website at <https://mapping.gw.govt.nz/gwrc/> (select theme Natural Resources Plan) and can be accessed from the Council offices or public library.

Cook Strait cable protection zone

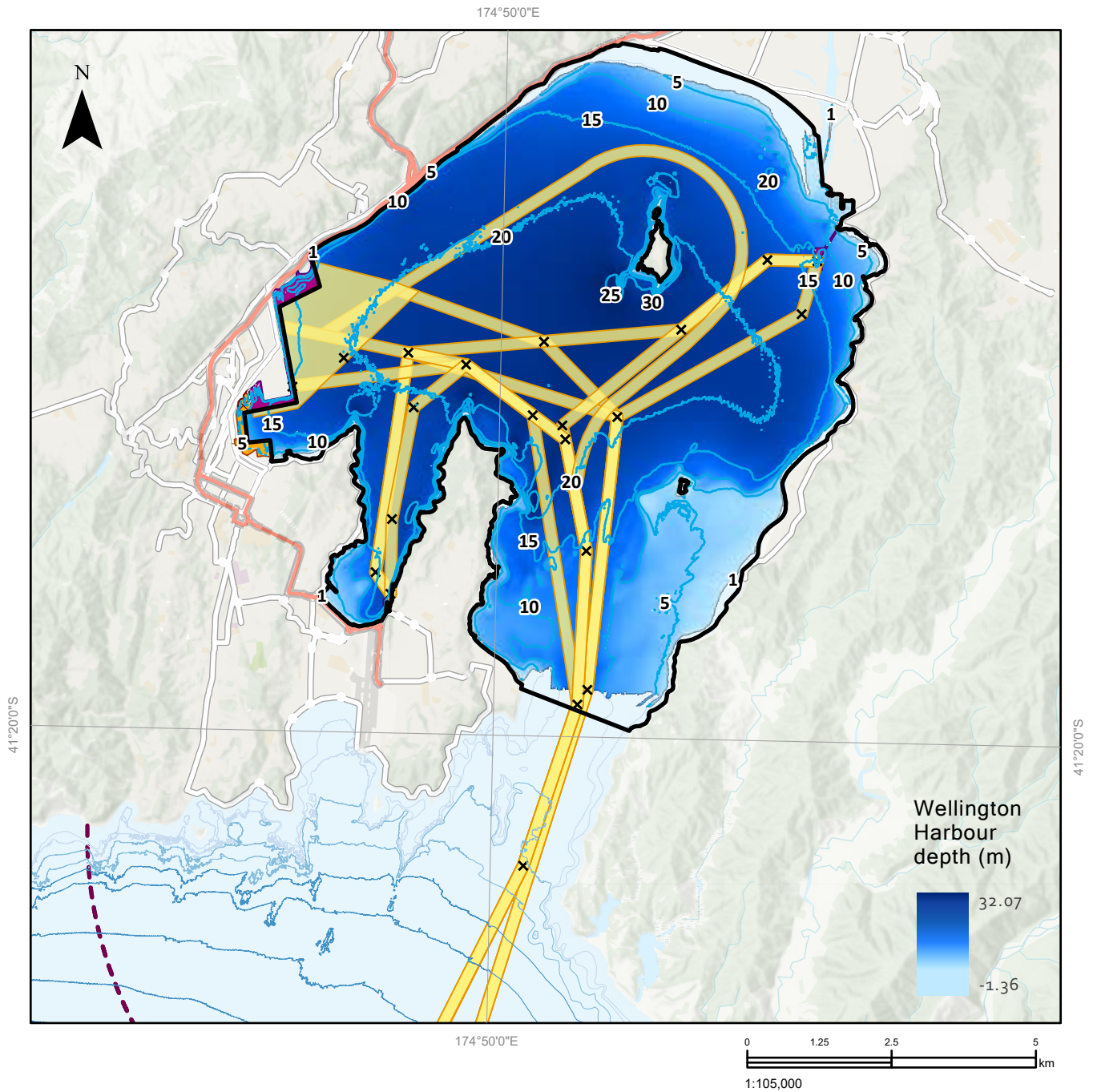
Map 71



-  Cook Strait Cable Protection Zone
-  State Highway
-  Region boundary line
-  Cable Protection Zone Coordinates



This version of the map is not complete. The version of this map available online through the online web map viewer shows the complete, detailed information on a GIS overlay that is not shown on this hard copy. The online version is available on the Council's website at <https://mapping.gw.govt.nz/gwrc/> (select theme Natural Resources Plan) and can be accessed from the Council offices or public library.

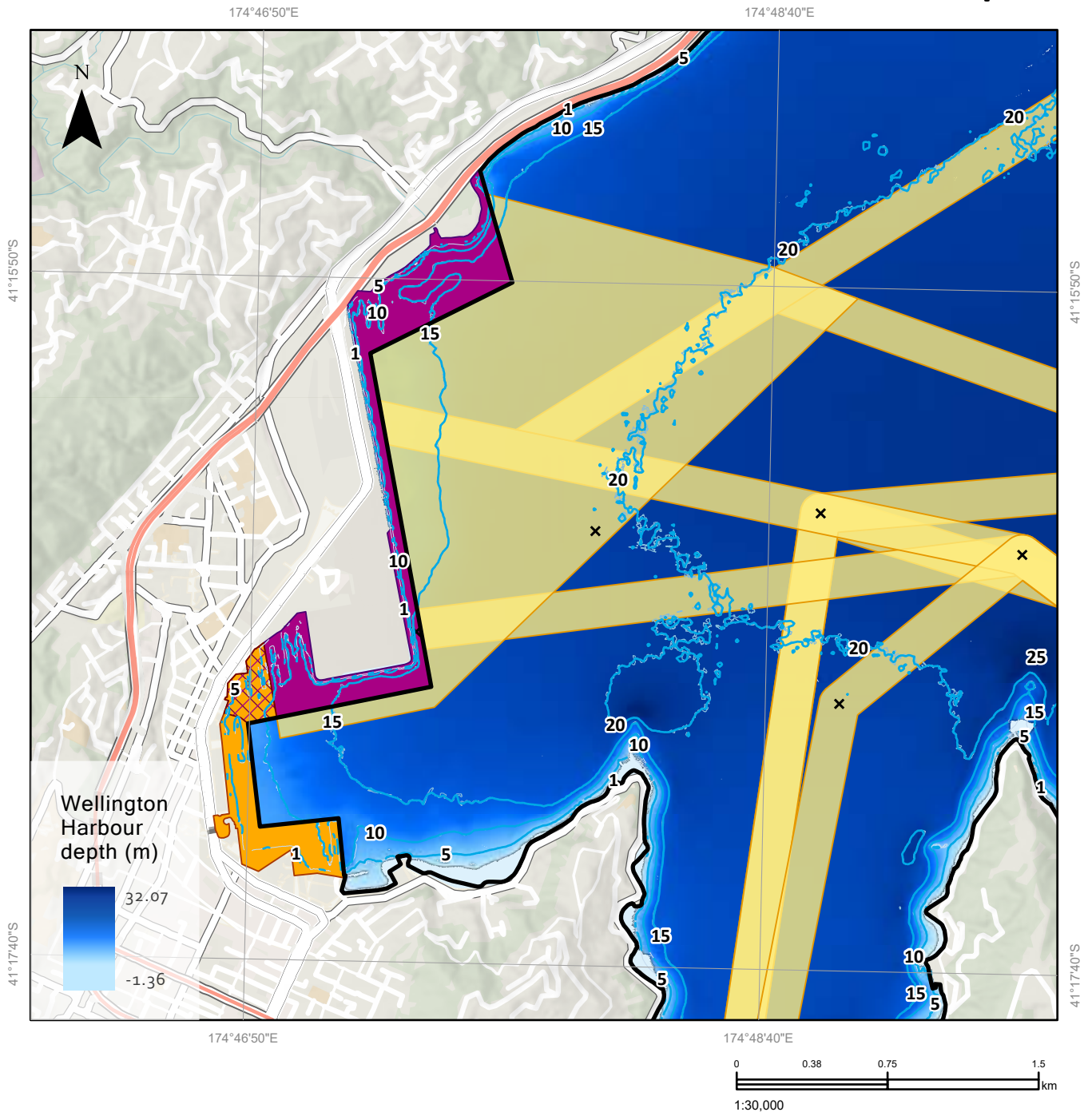







- | | |
|---|--|
|  Navigation Protection Areas |  Lambton Harbour Area (Northern Zone) |
|  Hutt Valley Aquifer Zone (Wellington Harbour) |  Wellington Harbour & Pilotage limit |
|  Commercial Port Area |  Pilotage Waypoint Stations |
|  Lambton Harbour Area | |

This version of the map is not complete. The version of this map available online through the online web map viewer shows the complete, detailed information on a GIS overlay that is not shown on this hard copy. The online version is available on the Council's website at <https://mapping.gw.govt.nz/gwrc/> (select theme Natural Resources Plan) and can be accessed from the Council offices or public library.

Seabed delineation in Lambton Harbour

Map 73



- | | |
|---|--|
|  Navigation Protection Areas |  Lambton Harbour Area (Northern Zone) |
|  Hutt Valley Aquifer Zone (Wellington Harbour) |  Wellington Harbour & Pilotage limit |
|  Commercial Port Area |  Pilotage Waypoint Stations |
|  Lambton Harbour Area | |


This version of the map is not complete. The version of this map available online through the online web map viewer shows the complete, detailed information on a GIS overlay that is not shown on this hard copy. The online version is available on the Council's website at <https://mapping.gw.govt.nz/gwrc/> (select theme Natural Resources Plan) and can be accessed from the Council offices or public library.

Castlepoint Basin Lagoon Permitted Driving Area



Map 74



 Castlepoint Basin Lagoon – permitted driving area

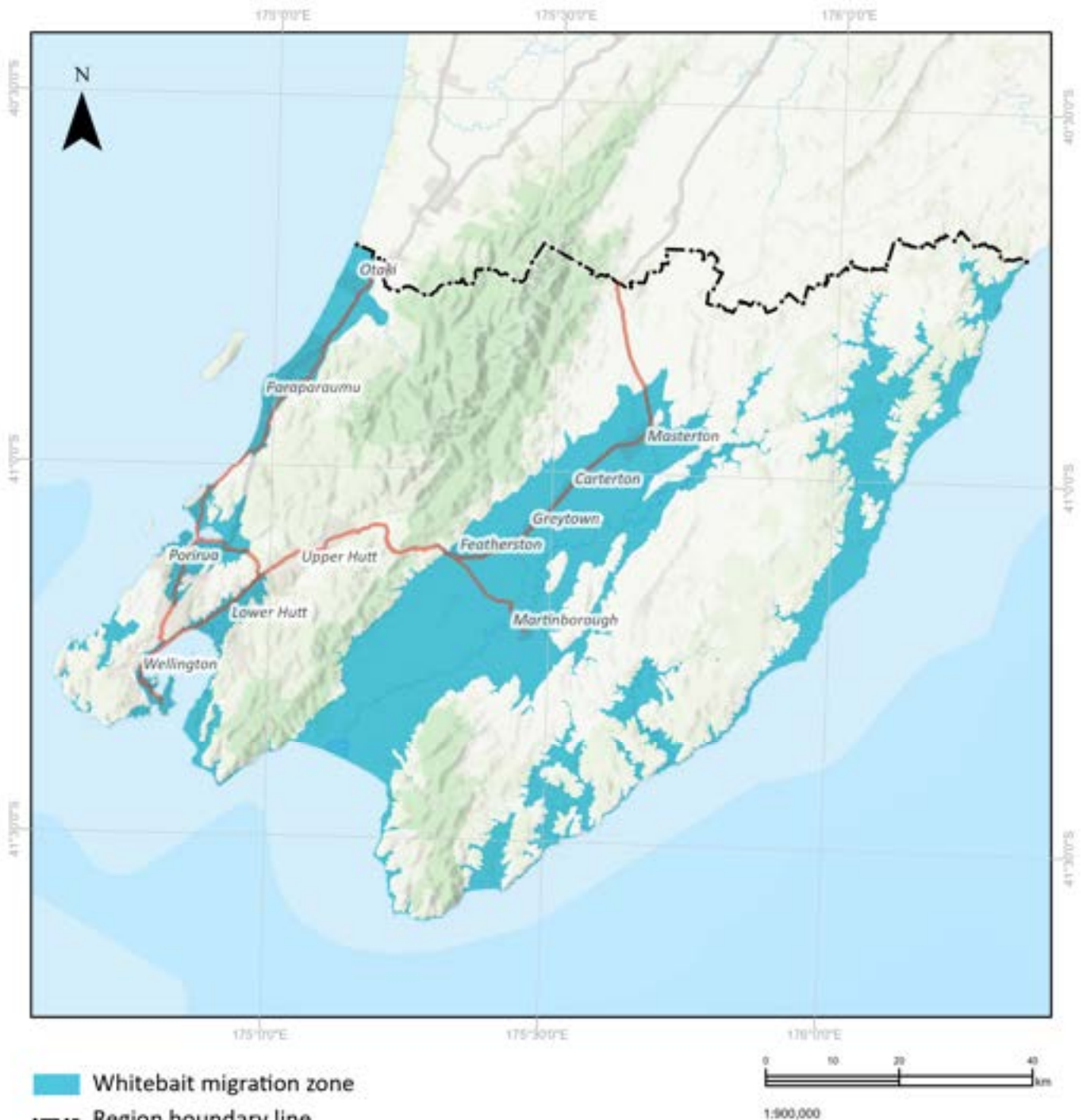


This version of the map is not complete. The version of this map available online through the online web map viewer shows the complete, detailed information on a GIS overlay that is not shown on this hard copy. The online version is available on the Council's website at <https://mapping.gw.govt.nz/gwrc/> (select theme Natural Resources Plan) and can be accessed from the Council offices or public library.

Whitebait Migration Zone



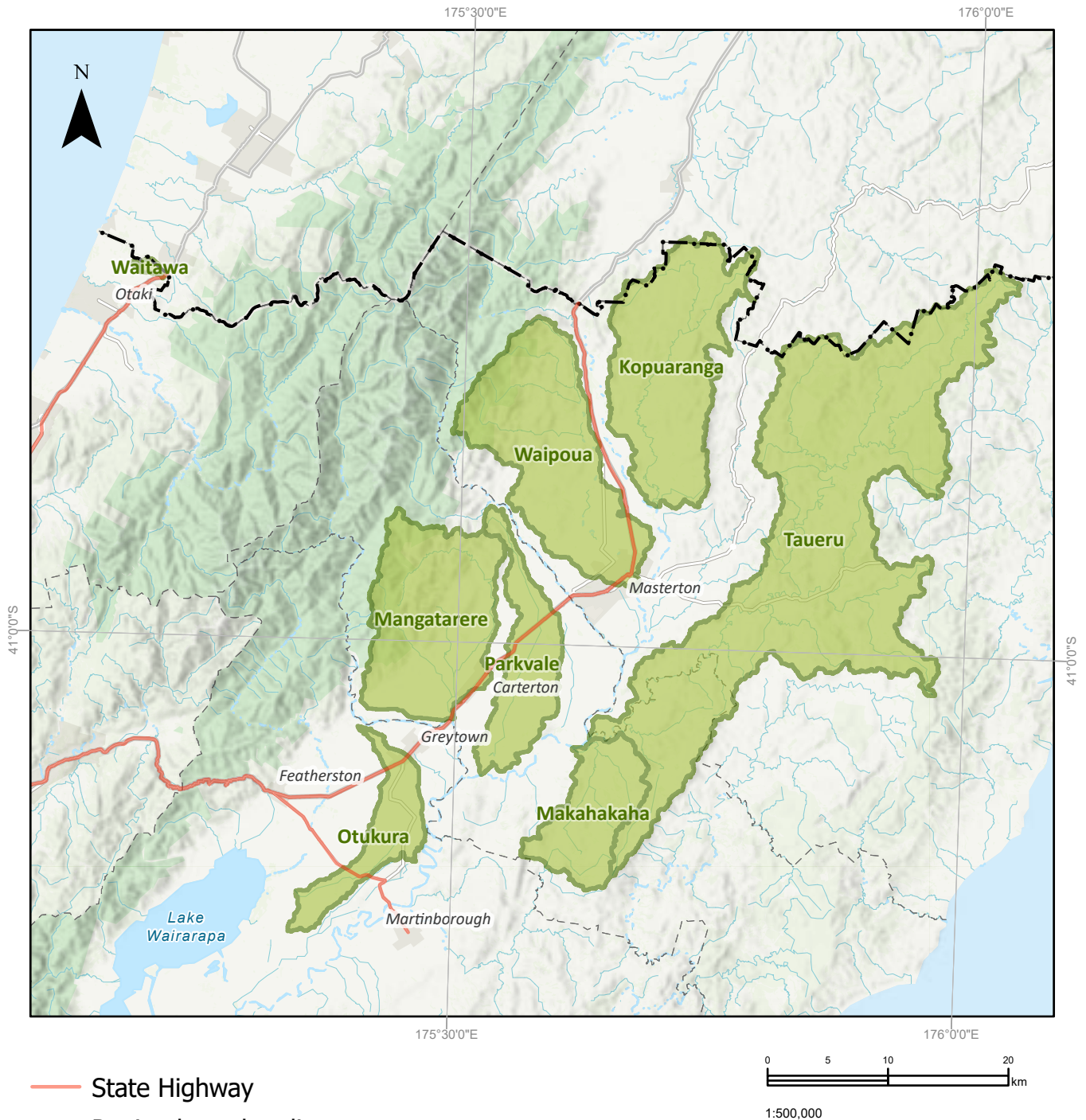
Map 75



This version of the map is not complete. The version of this map available online through the online web map viewer shows the complete, detailed information on a GIS overlay that is not shown on this hard copy. The online version is available on the Council's website at <https://mapping.gw.govt.nz/gwrc/> (select theme Natural Resources Plan) and can be accessed from the Council offices or public library.

Schedule Y: Priority Catchments

Map 76



- State Highway
- - - Region boundary line
- Priority Catchments

This version of the map is not complete. The version of this map available online through the online web map viewer shows the complete, detailed information on a GIS overlay that is not shown on this hard copy. The online version is available on the Council's website at <https://mapping.gw.govt.nz/gwrc/> (select theme Natural Resources Plan) and can be accessed from the Council offices or public library.

Copyright
Basemap: Eagle Technology, GWRC & LINZ
Topographic & Cadastral: LINZ, CoreLogic
Projection: NZTM 2000





For more information, please contact Greater Wellington:

Wellington office

PO Box 11646
Manners St
Wellington 6142
T 04 384 5708
F 04 385 6960

Masterton office

PO Box 41
Masterton 5840
T 06 378 2484
F 06 378 2146

www.gw.govt.nz
info@gw.govt.nz



2023

