

# CHRISTCHURCH COASTAL PATHWAY [CCP]



## WHAT'S HAPPENING?

The Christchurch Coastal Pathway project feasibility study is underway!

Christchurch Coastal Pathway Group initiated the project.

The Christchurch City Council have agreed to fund the feasibility and concept plan stage, and to project manage this process.

The feasibility study will detail the vision and will entail the preparation of a master plan and costing, and an assessment of its benefits.

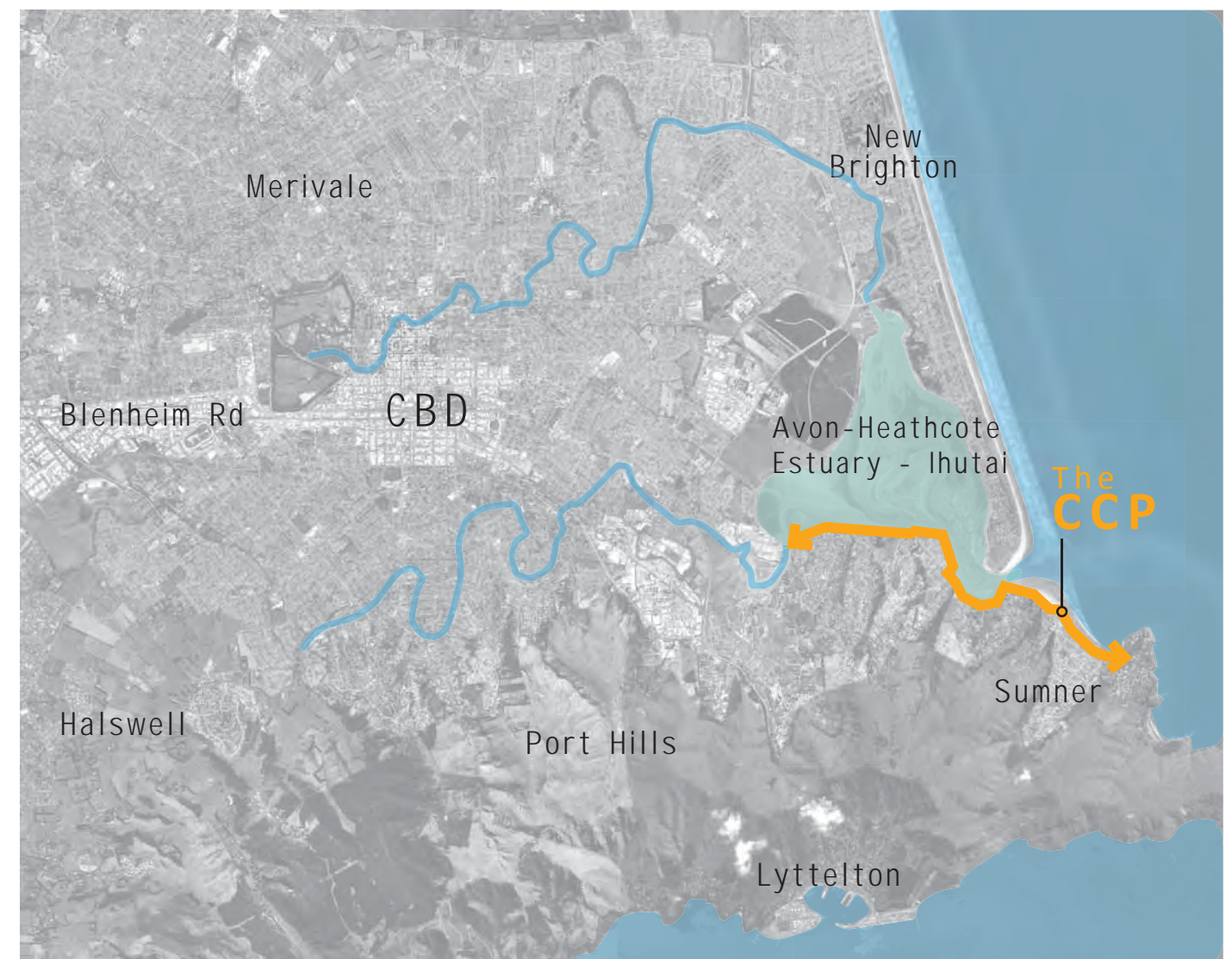
## WHY ARE YOU IMPORTANT?

We want this to be a community-led project.

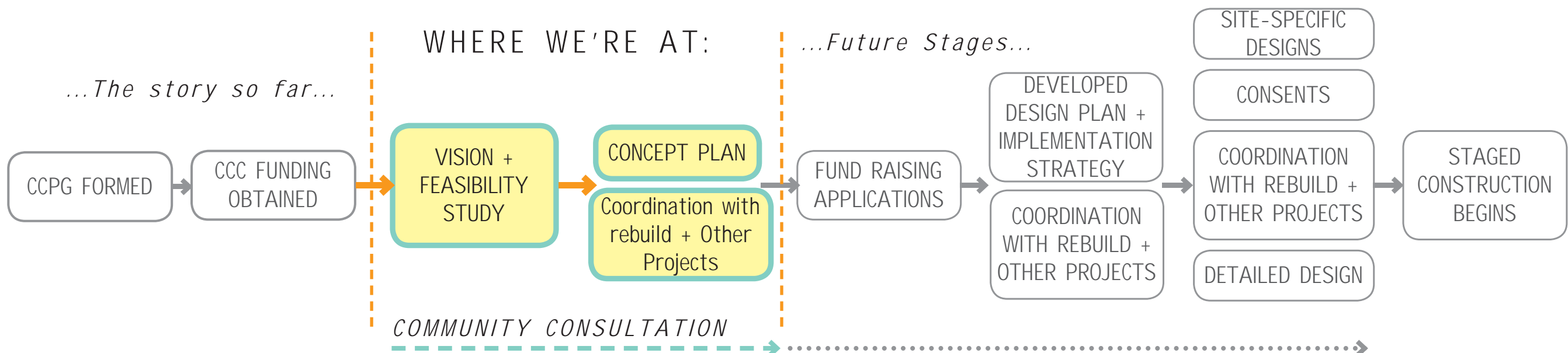
So, we have organised three community meetings over the next two months to make sure everyone can have their say in what the outcome will be.

We also want to be able to have a measure of how significant this project will be, in order to maximise funding. *This needs your input.*

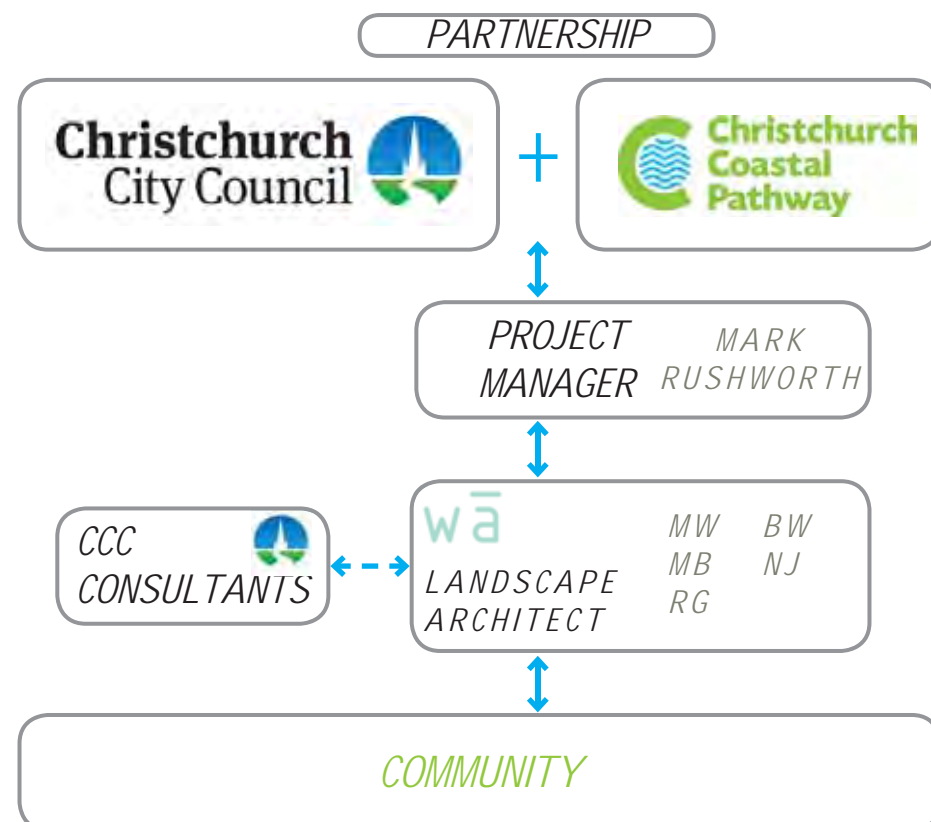
## CONTEXT:



# THE PROCESS:



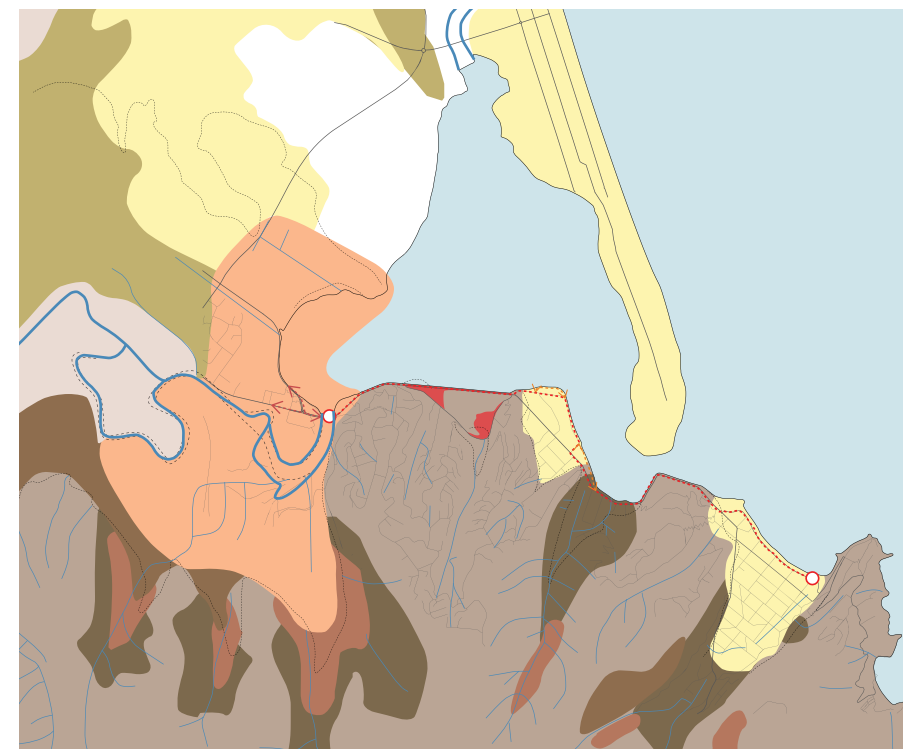
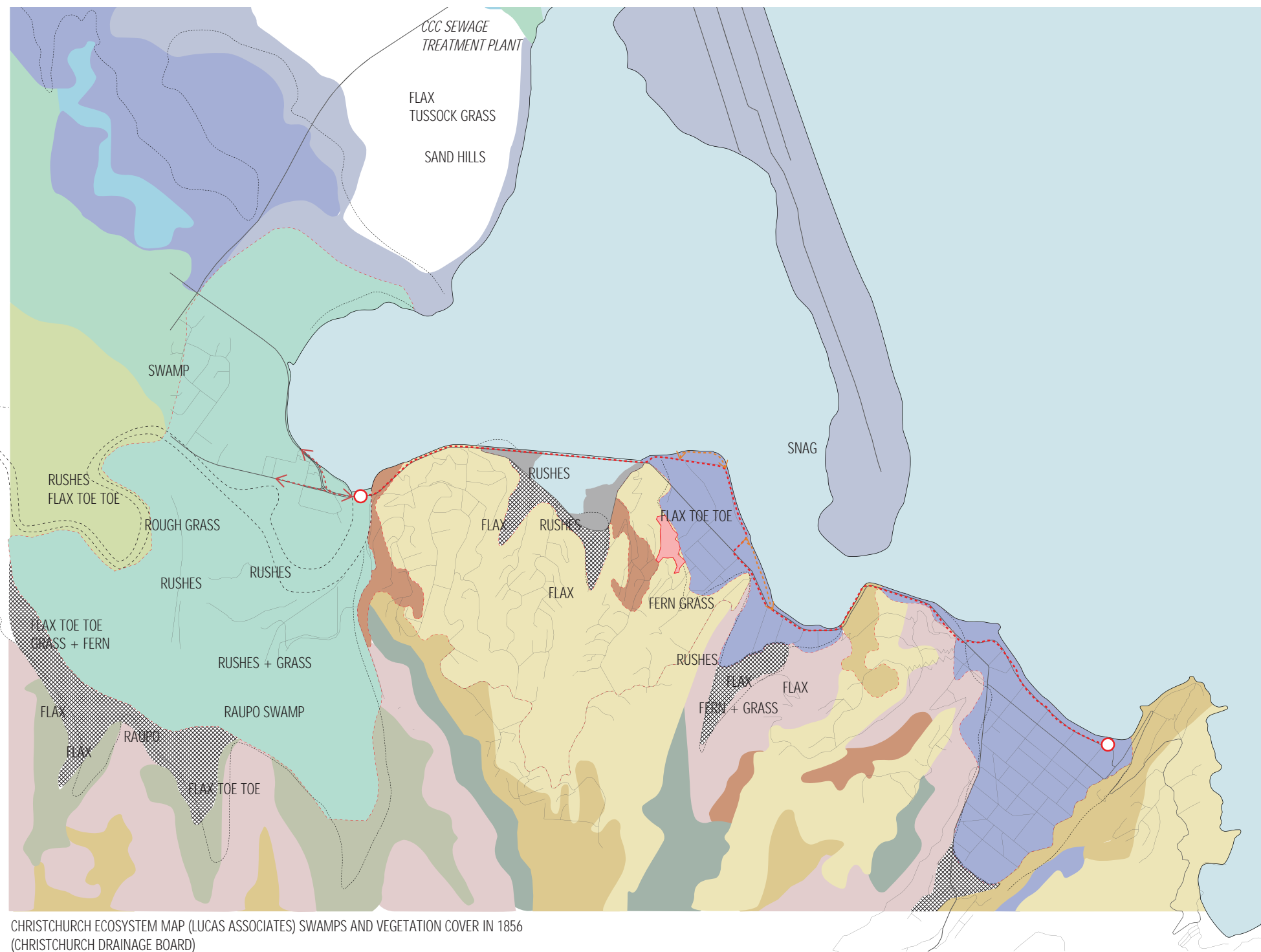
# TEAM STRUCTURE:



# TONIGHT'S PROGRAMME:

10 mins	INTRODUCTION ...to the project, where it is going and how the session has been organised (by CCC and WA)
10 mins	SITE ISSUES AND MAPS - <i>INTRODUCTION</i> ...to this background material, which will be displayed around the room (by WA)
30 mins	SITE ISSUES AND MAPS - <i>COMMENTS</i> Attendees invited to read panels and (using post it notes) comment on issues that have been captured or need further detail. Facilitated by WA, RG and CCC.
40 mins	OPPORTUNITIES Community sit-down in tables of maximum 10 persons to discuss important spots on the route, locations and types of activities, and crossings. Facilitated by WA, RG and CCC.
20 mins	OPPORTUNITIES - <i>SUMMARY</i> Summary of opportunities. Each table to present in 2 minutes the key ideas, in two categories: the broad objectives, and the particular or site specific desirable outcomes. Facilitated by WA.
10 mins	WRAP UP By WA

# GEOLOGY + ECOSYSTEMS



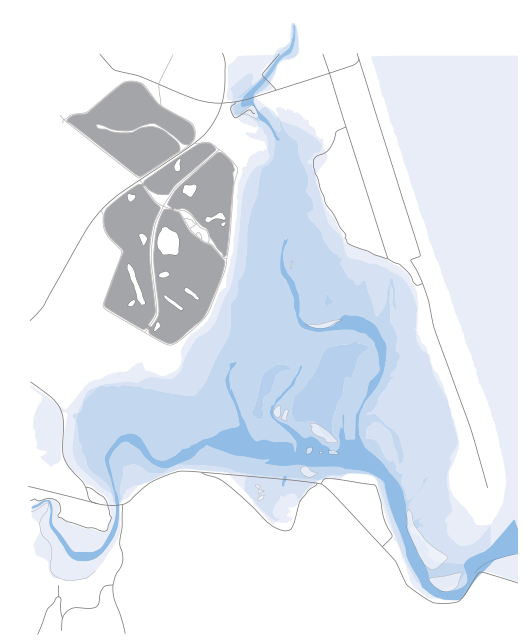
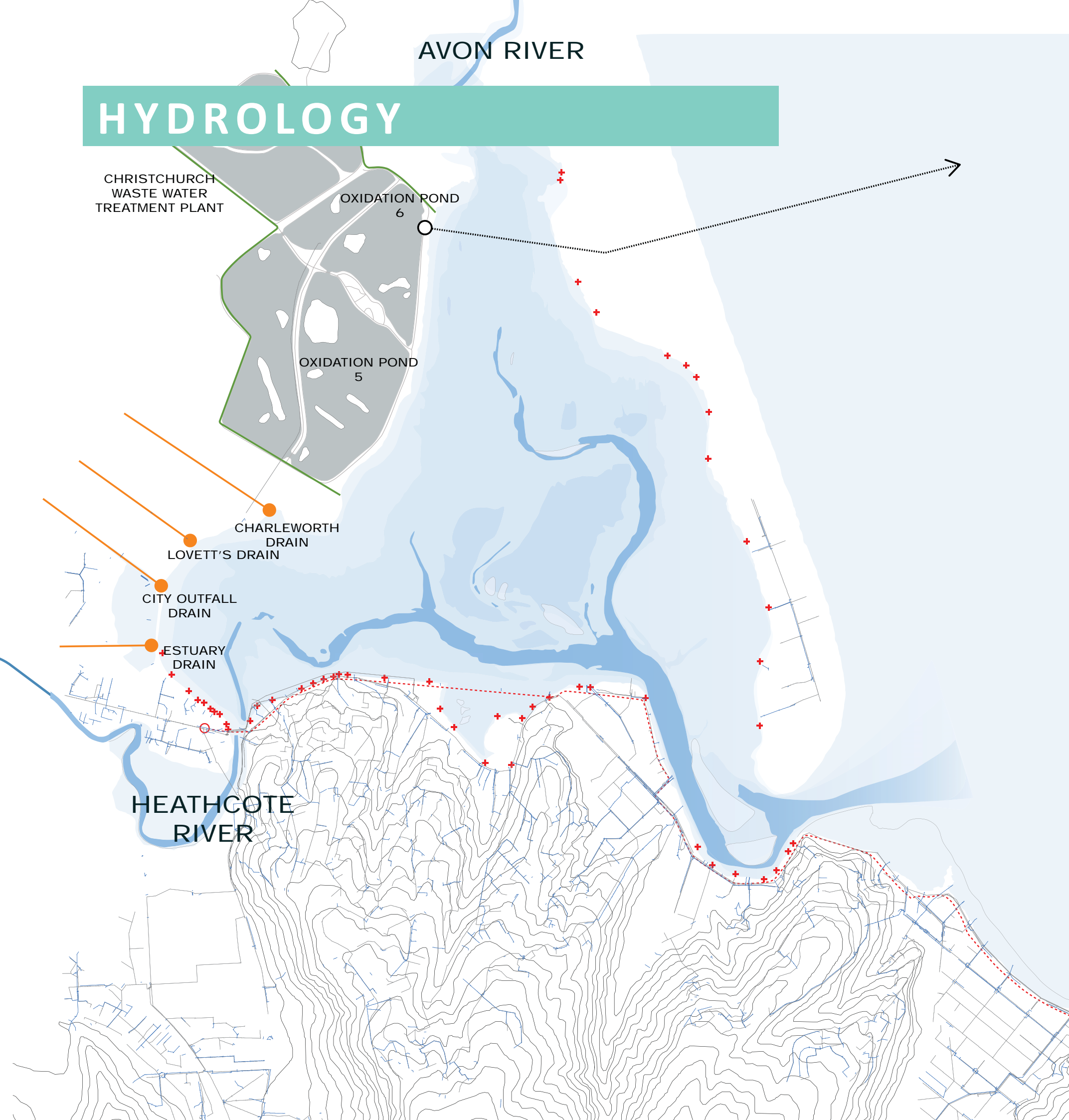
INFORMATION SOURCED FROM RESOURCES.CCC.GOV.T.NZ (SOILS AND GEOMORPHOLOGY OF CHRISTCHURCH)

- KAIRAKI (COASTAL PLAINS - YOUNG DUNES)
- WAIKUKU (COASTAL PLAINS - OLD DUNES)
- MOTUKARARA (COASTAL PLAINS - ESTUARINE PLAIN)
- KAIAPOI (ALLUVIAL FLOODPLAINS - OLDER TERRACES)
- WAKANUI
- CASHMERE (VOLCANIC HILLS - DRY ROCKY RIDGES)
- SCARBOROUGH
- KIWI (VOLCANIC HILLS - STEEP LOWER SLOPES)
- RECLAIMED

- AKEAKE (RIRORIRO - NGAIO, OLD DUNE SYSTEM)
- AKEAKE (JEWELLED GECKO, FOOT-SLOPE ECOSYSTEM OF STEEP SCARBOROUGH HILL SOILS)
- TUSsock (GREEN SKINK - TI KOUKA, YOUNG PLAINS ECOSYSTEM)
- KOROKIO (RIRORIRO, ROCKY RIDGE ECOSYSTEM OF CASHMERE SOILS)
- OIOI (ESTURINE ECOSYSTEM, MOTUJARARA SOILS, TUTURIWHATU, MARSH)
- SILVER TUSsock (COMMON GECKO, STEEP, ROCKY, BLUFF ECOSYSTEM OF EVANS STEEPLAND SOILS)

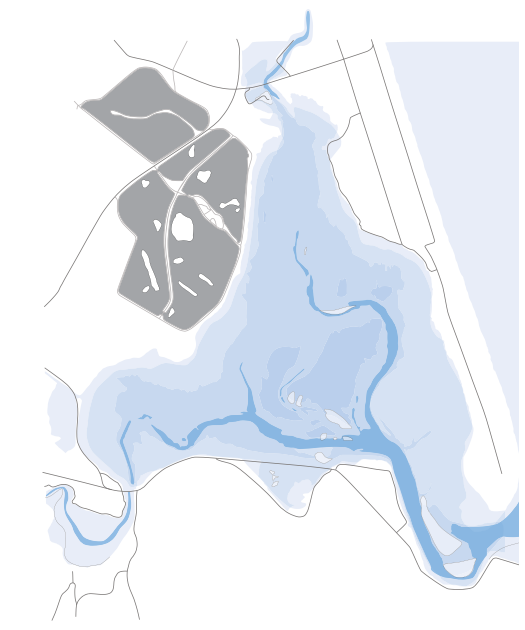


# HYDROLOGY



PRE SEPTEMBER 2010 EARTHQUAKE: TIDAL FLOWS

- HIGH TIDE
- MID TIDE
- LOW TIDE (MAJOR WATER CHANNELS)



POST FEBRUARY 2011 EARTHQUAKE: TIDAL FLOWS

- HIGH TIDE
- MID TIDE
- LOW TIDE (MAJOR WATER CHANNELS)

- DRAINS
- DRAIN OULET
- STORMWATER OULET
- TOE DRAINS
- PIPING NETWORK
- STORMWORK NETWORK



# WILDLIFE



## MARINE LIFE



## PUKEKO + ROYAL SPOONBILL



- NESTING + GENERAL DISTRIBUTION
- HIGH TIDE DISTRIBUTION
- MAIN FEEDING AREAS
- MAXIMUM DISTRIBUTION LIMIT

## GREY TEAL + NZ SCAUP



- HIGH TIDE DISTRIBUTION
- MAIN FEEDING AREAS
- MAXIMUM DISTRIBUTION (GREY TEAL)
- MAIN FEEDING AREAS
- MAXIMUM DISTRIBUTION (SCAUP)

## CORMORANTS + SHAGS



- ROOSTING SITES (BLACK CORMORANT)
- ROOSTING SITES (PIED CORMORANT)
- ROOSTING SITES (LITTLE CORMORANT)
- ROOSTING SITES (SPOTTED SHAG)

INFORMATION SOURCED FROM (THE ESTUARY -WHERE OUR RIVERS MEET THE SEA, EDITED BY S-J OWEN)



# WILDLIFE

INFORMATION SOURCED FROM (THE ESTUARY -WHERE OUR RIVERS MEET THE SEA, EDITED BY S-J OWEN)

## BLACK SWAN



## WHITE FACED HERON



## PARADISE SHELDUCK



## CANADA GOOSE



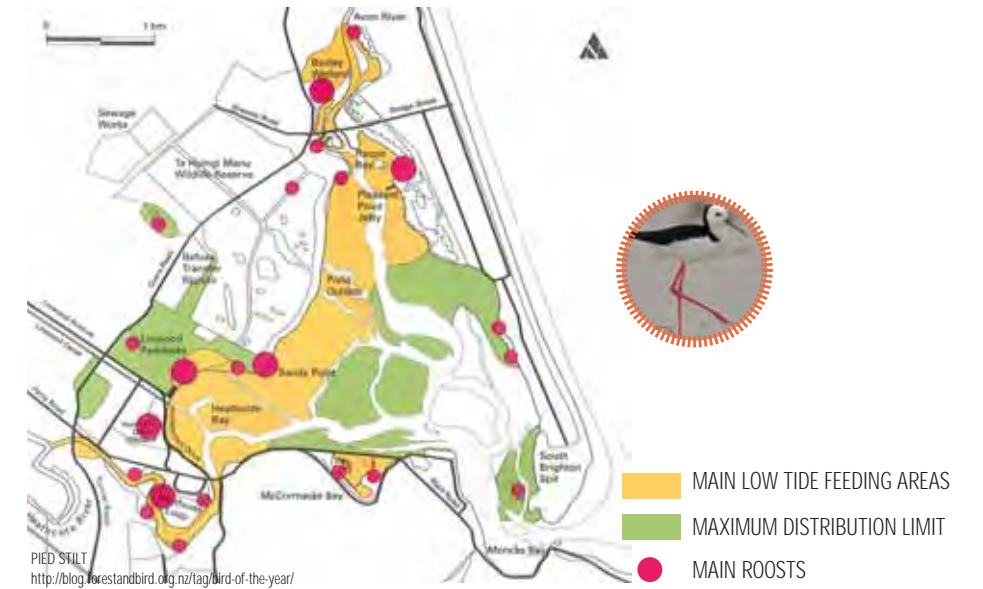
## NZ SHOVELER



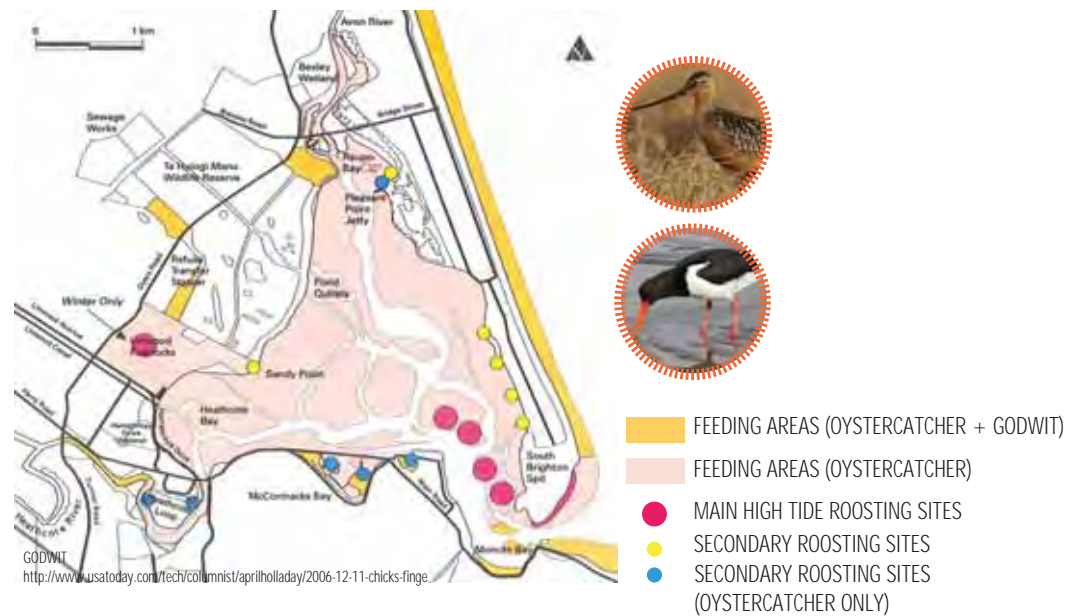
## MALLARD + GREY DUCK



## PIED STILT DISTRIBUTION



## SOUTH ISLAND PIED OYSTERCATCHER, BAR-TAILED GODWIT



## PIED STILT, BLACK + PIED CORMORANTS, BLACK-BACKED GULL. KINGFISHER





# HISTORY



MCCORMACKS BAY: THE CAUSEWAY - EARLY 1900s  
(SOURCED FROM 'THE ESTUARY, WHERE OUR RIVERS MEET THE SEA: A. ALDERSLEY; CANTERBURY MUSEUM')



FERRYMEAD BRIDGE - DURING WW1 (SOURCED FROM 'THE ESTUARY, WHERE OUR RIVERS MEET THE SEA: DAVID BARR')



CLIFTON: THE ROAD BELOW - 1907 (SOURCED FROM 'THE ESTUARY, WHERE OUR RIVERS MEET THE SEA: CANTERBURY MUSEUM')



FISHERMAN'S FLAT + MONCK'S BAY - 1800s (SOURCED FROM 'THE ESTUARY, WHERE OUR RIVERS MEET THE SEA: CANTERBURY MUSEUM')



MONCK'S BAY - 1882 (SOURCED FROM 'THE ESTUARY, WHERE OUR RIVERS MEET THE SEA: J. SPILLER, PILGRIMS ASSOCIATION COLLECTION')



SHAG ROCK: THE MOUTH OF THE ESTUARY - 1900 (SOURCED FROM 'THE ESTUARY, WHERE OUR RIVERS MEET THE SEA: J.J. KINSEY; CANTERBURY MUSEUM')



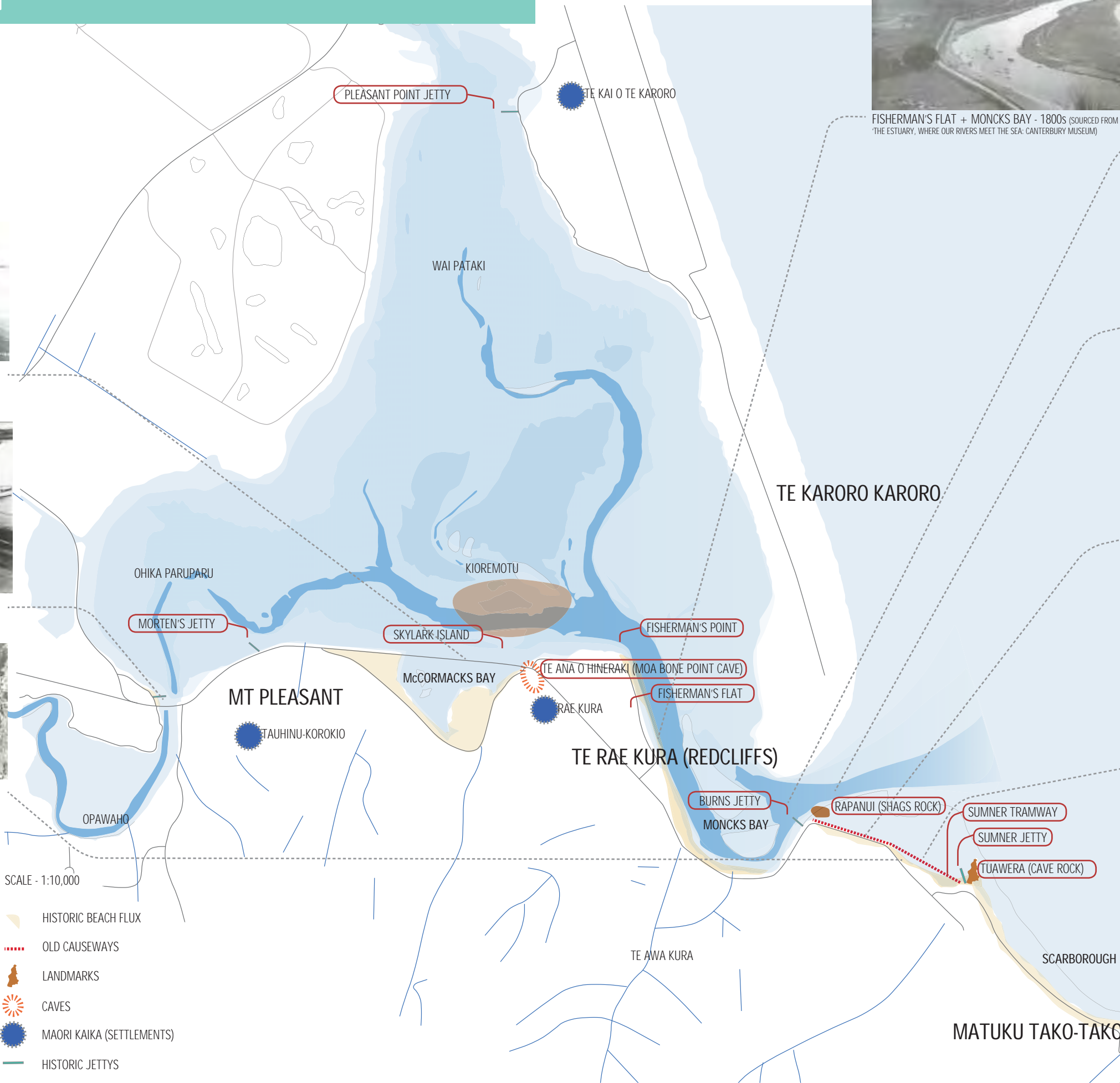
CLIFTON: TRAM CAUSEWAY (SOURCED FROM 'THE ESTUARY, WHERE OUR RIVERS MEET THE SEA: CANTERBURY MUSEUM')



SUMNER BEACH - CIRCA 1910 (SOURCED FROM TIMEFRAMES, TAKEN BY WILLIAM A. PRICE)



SCARBOROUGH - EARLY PHOTO (SOURCED FROM 'THE ESTUARY, WHERE OUR RIVERS MEET THE SEA: CANTERBURY MUSEUM')



SCALE - 1:10,000

HISTORIC BEACH FLUX

OLD CAUSEWAYS

LANDMARKS

CAVES

MAORI KAIKA (SETTLEMENTS)

HISTORIC JETTYS

MATUKU TAKO-TAKO (SUMNER)

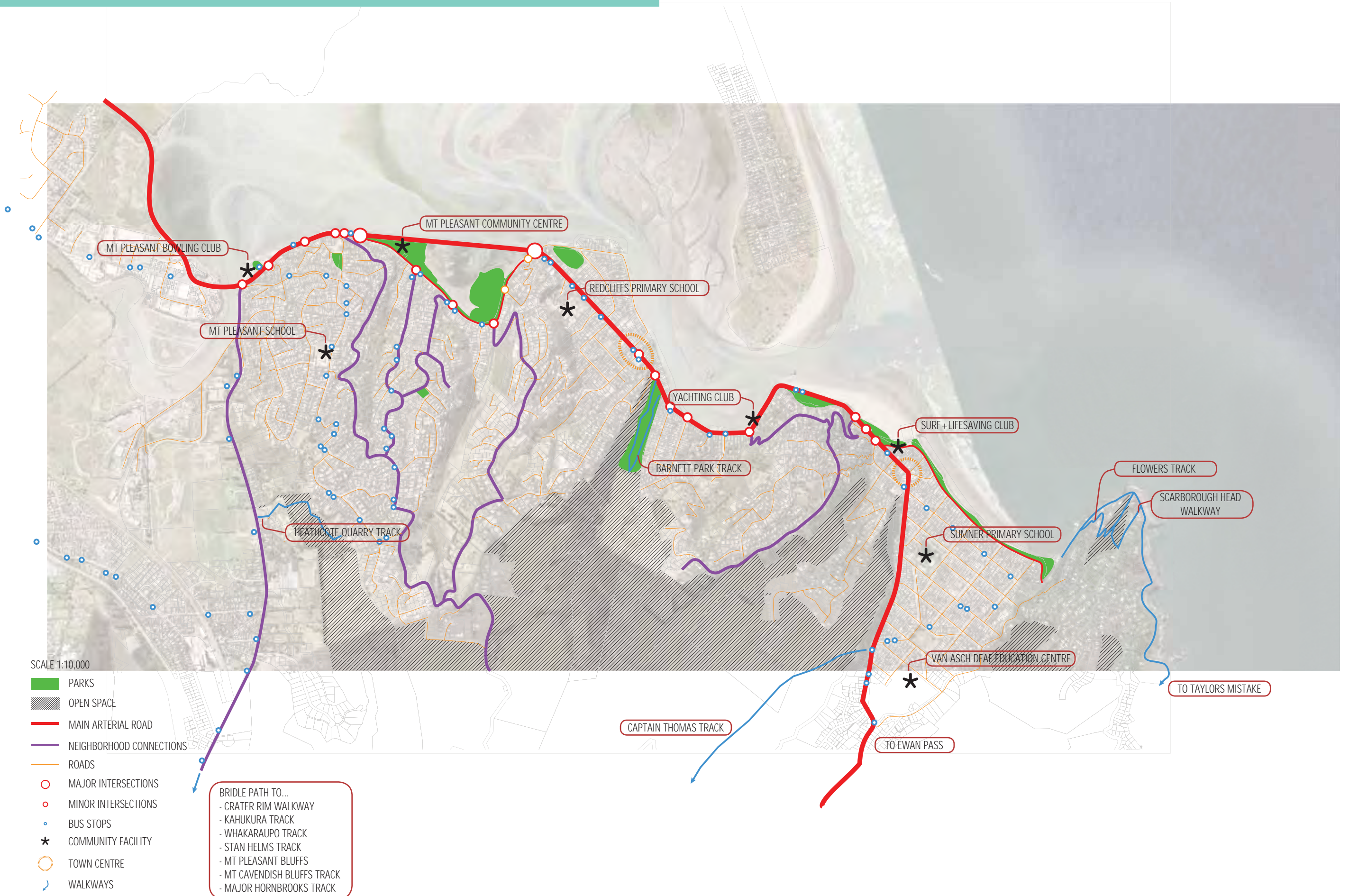


# RECREATION



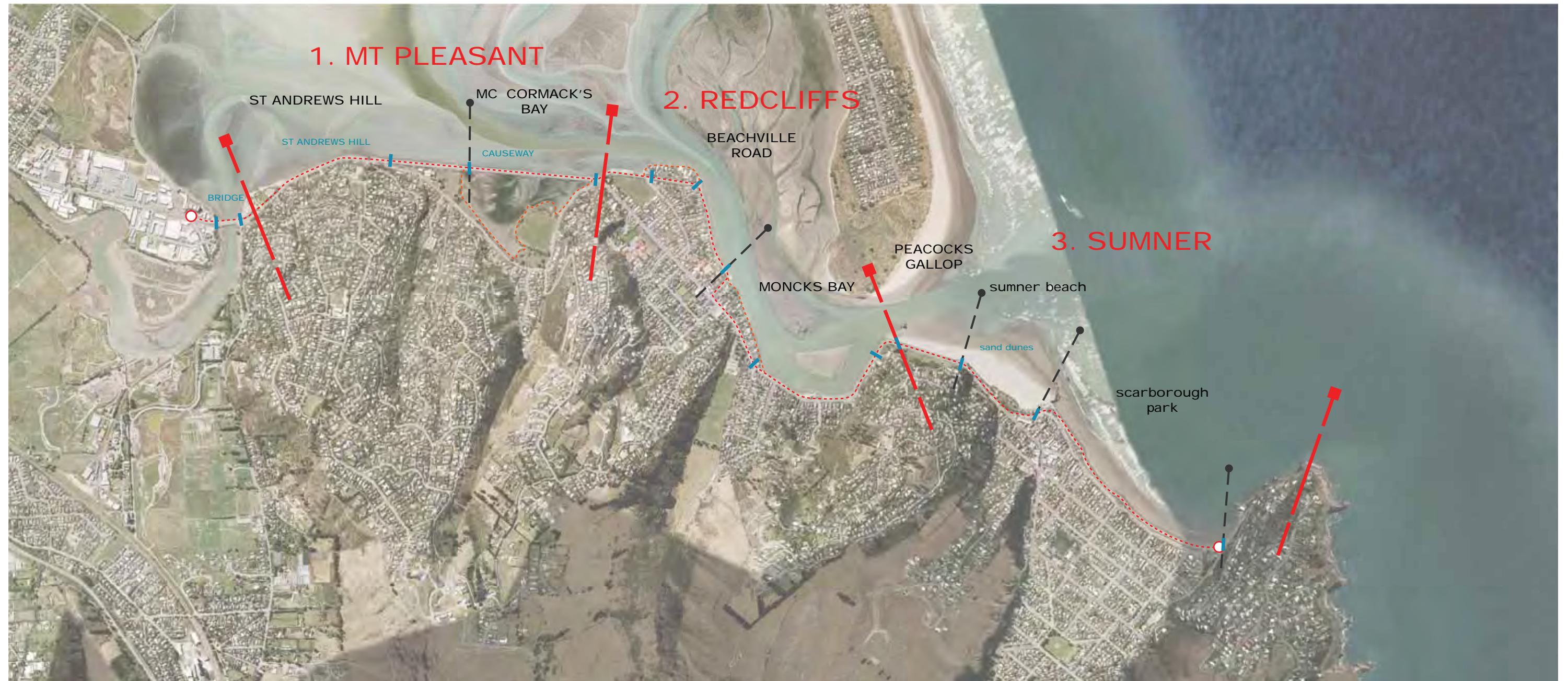


# CONNECTIONS





# NEIGHBOURHOODS, [ZONES, CONDITIONS]



SCALE 1:10,000

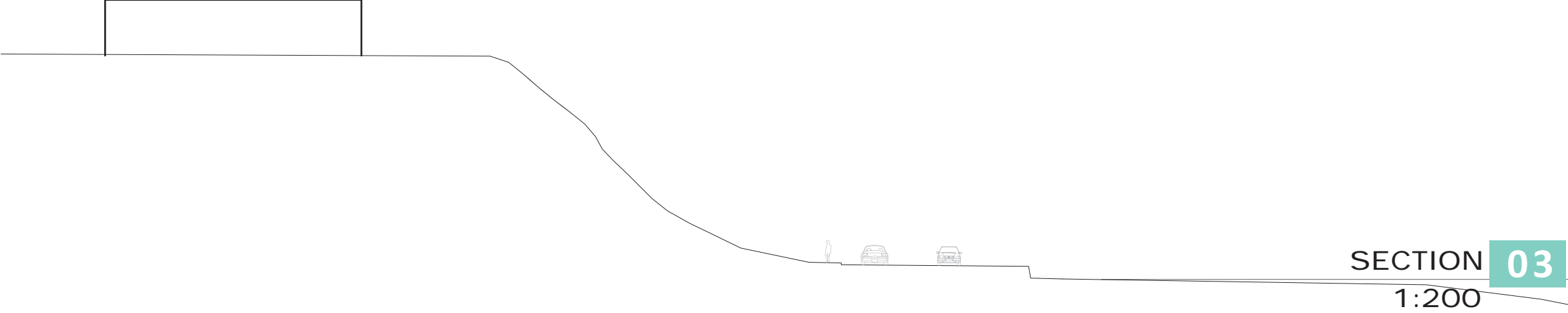
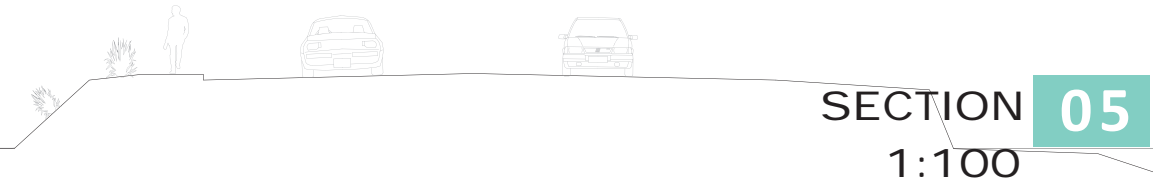
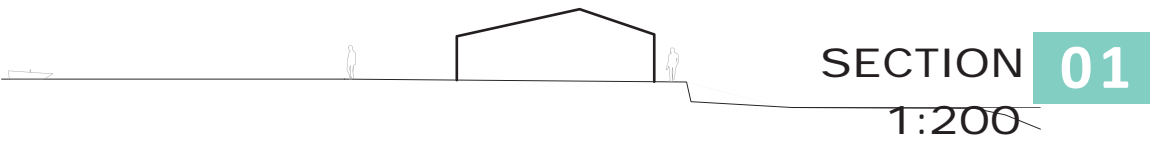
- NEIGHBOURHOODS
- ZONES
- CONDITIONS
- INITIAL PROPOSED PATHWAY
- LONG TERM PROPOSED PATHWAY



# MT PLEASANT



SCALE 1:5,000

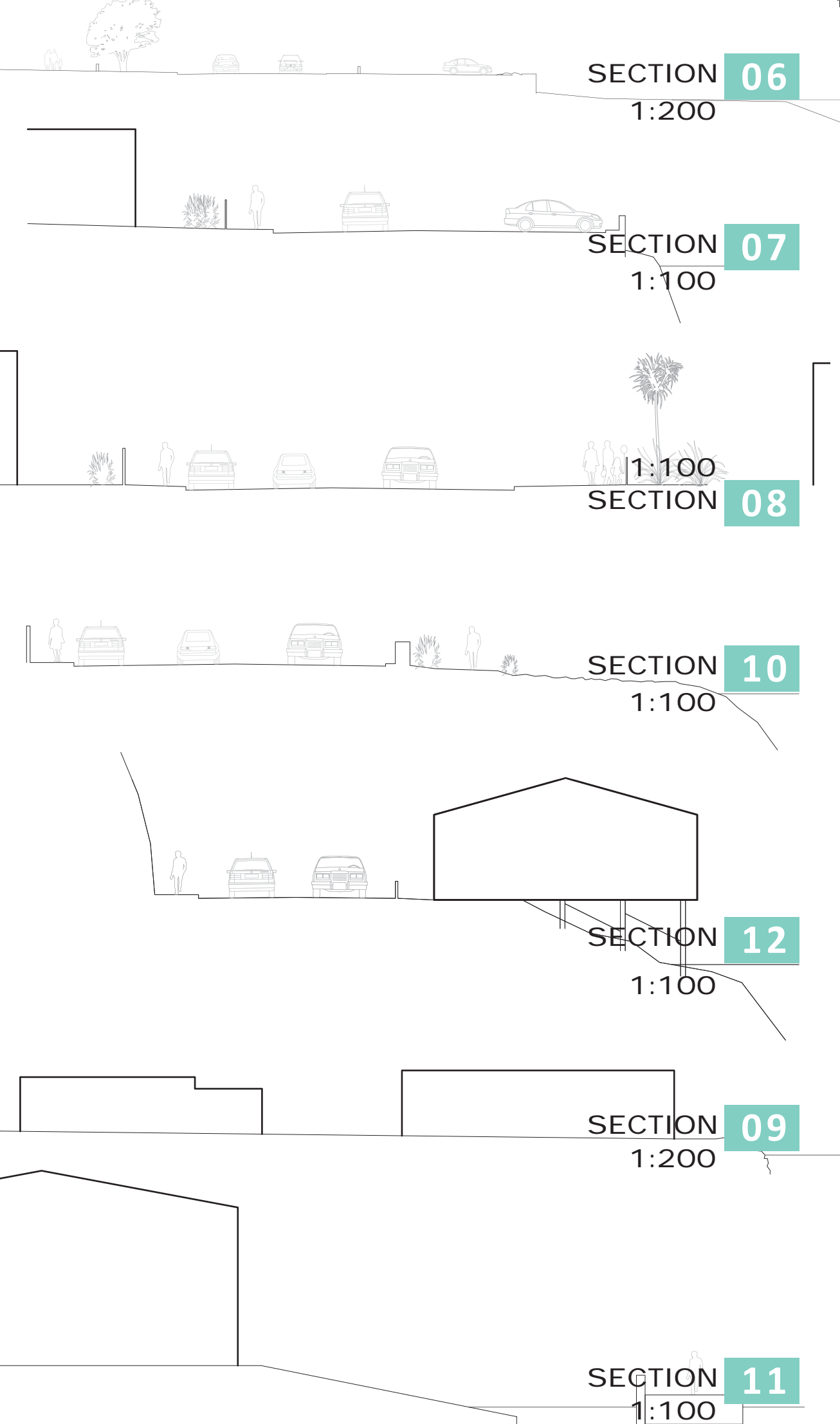




# REDCLIFFS

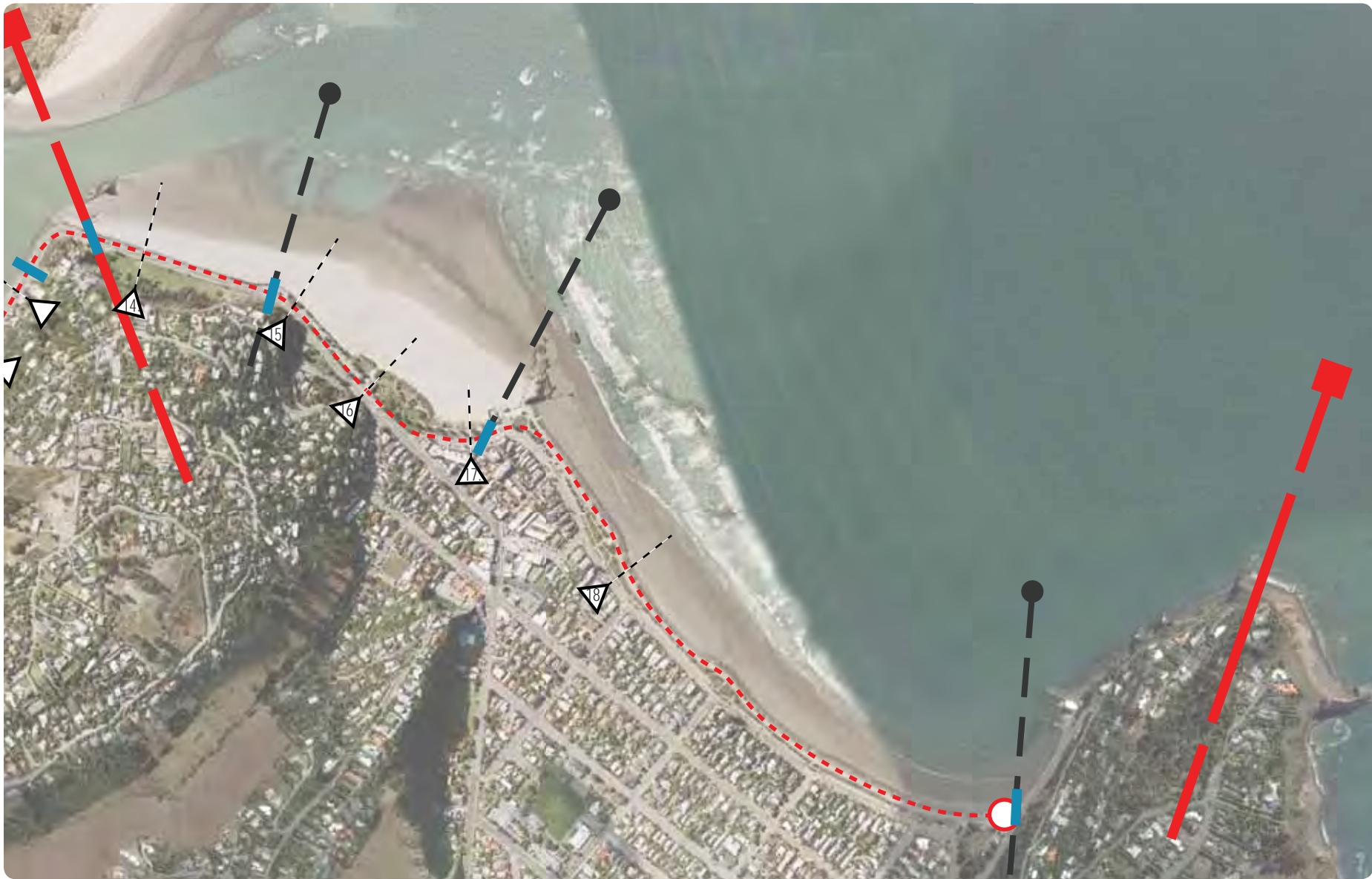


SCALE 1:5,000





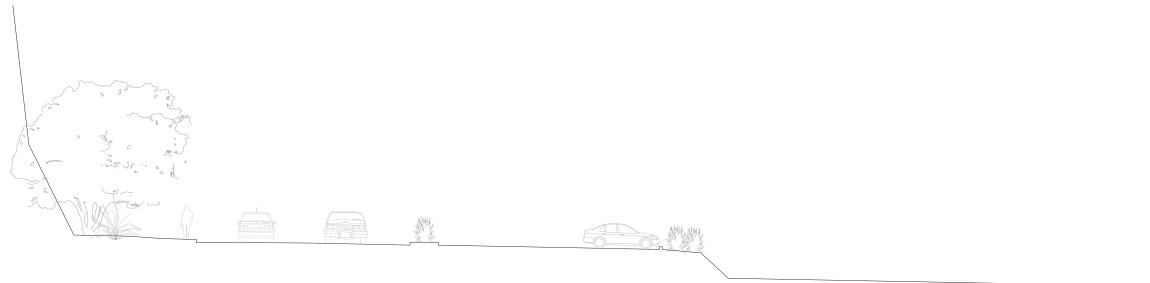
# SUMNER



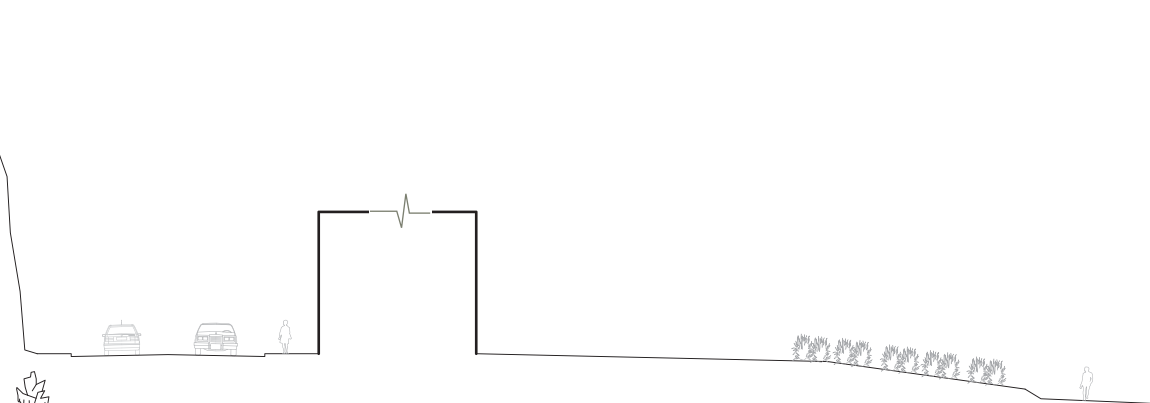
SCALE 1:5,000



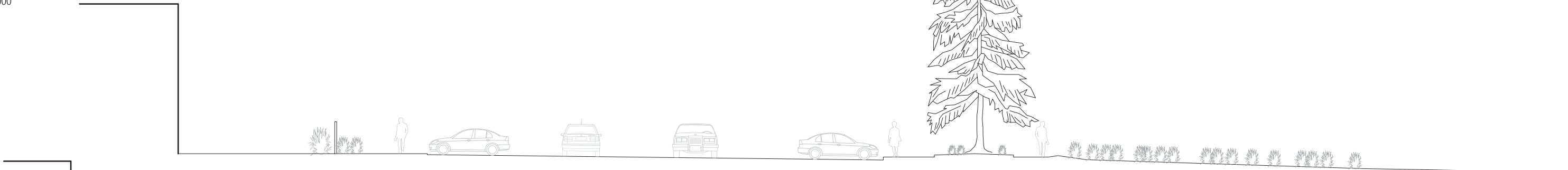
SECTION 1:200 **14**



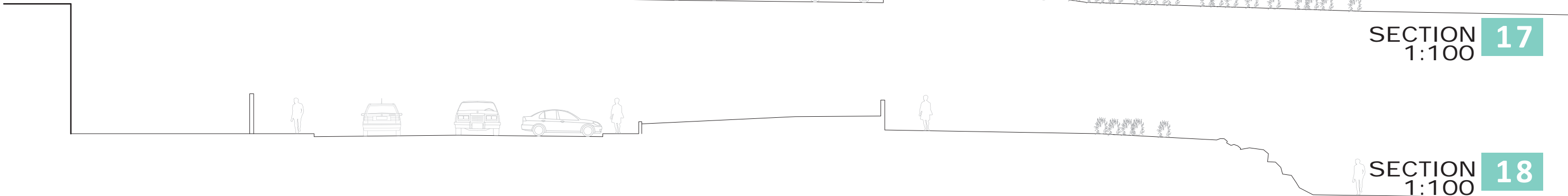
SECTION 1:200 **15**



SECTION 1:200 **16**

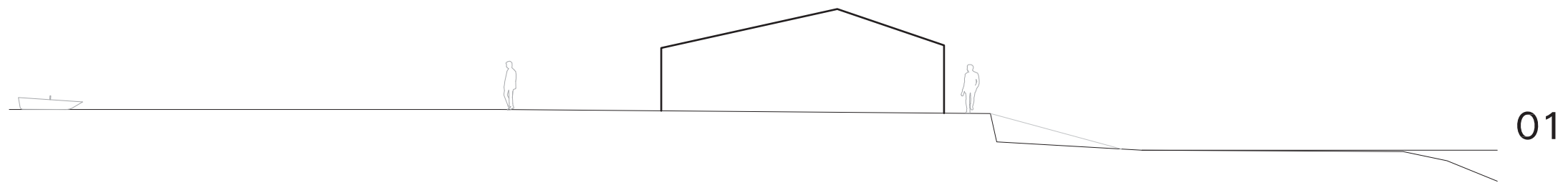


SECTION 1:100 **17**



SECTION 1:100 **18**

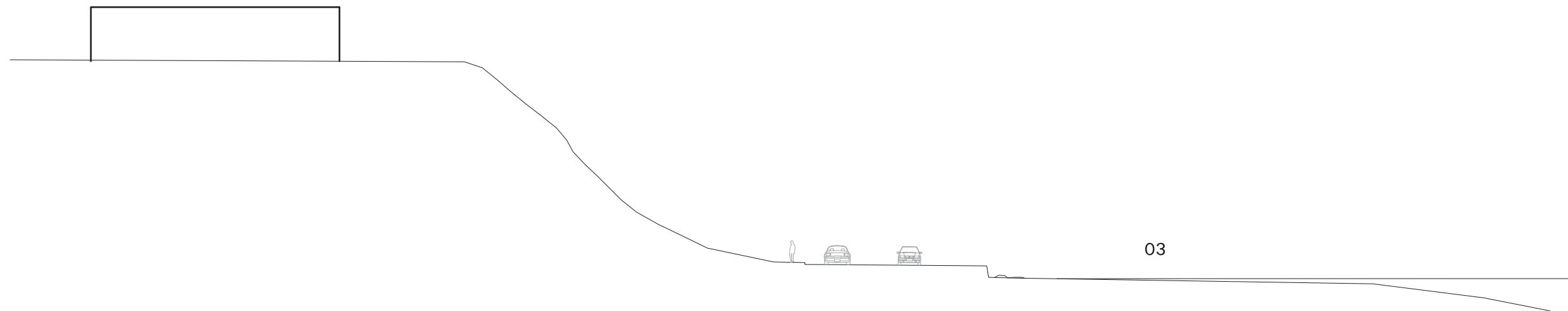
1:100 @A1



1:200 @A1



1:200 @A1



1:100 @A1



DRAFT - FOR DISCUSSION ONLY

[illegible]

drawing title:  
**Site Sections Sheet 01**

scale:  
**as shown @ A1**

drawing no.

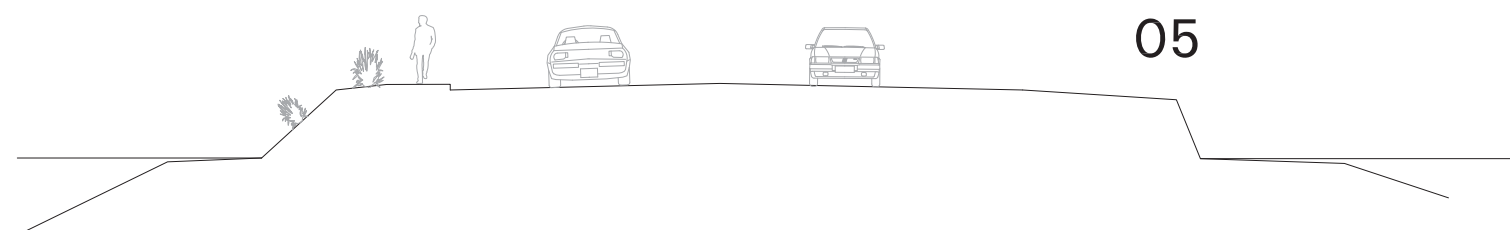
project name:  
Christchurch Coastal Pathway

client:  
CCC + CCPG

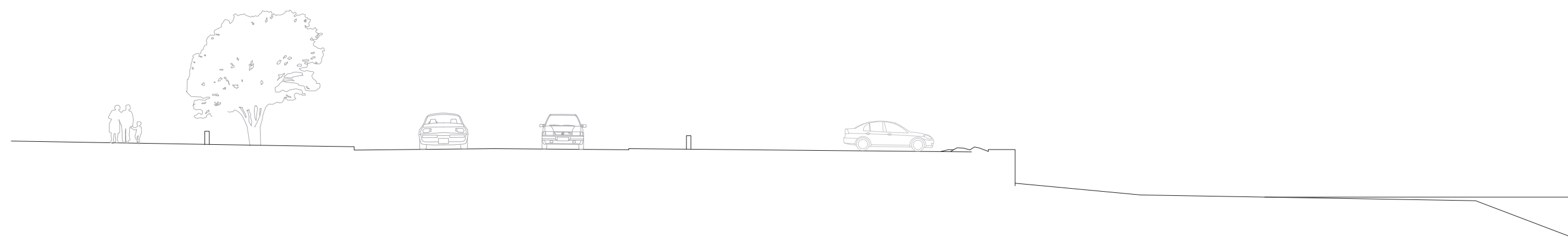
project no.  
1211



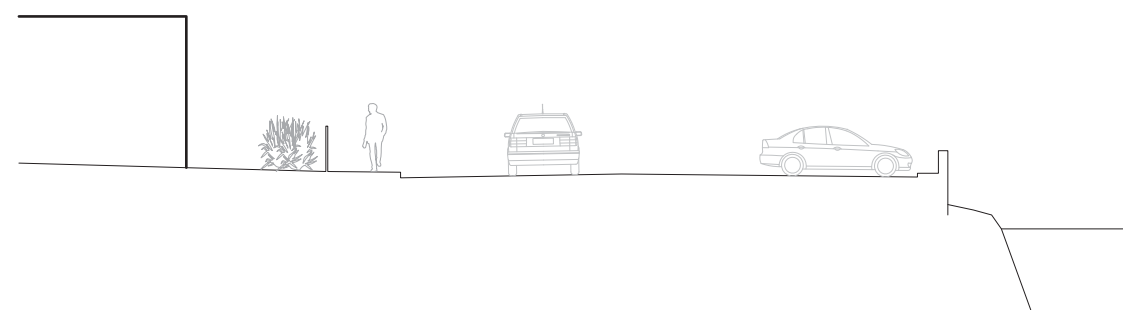
1:100 @A1



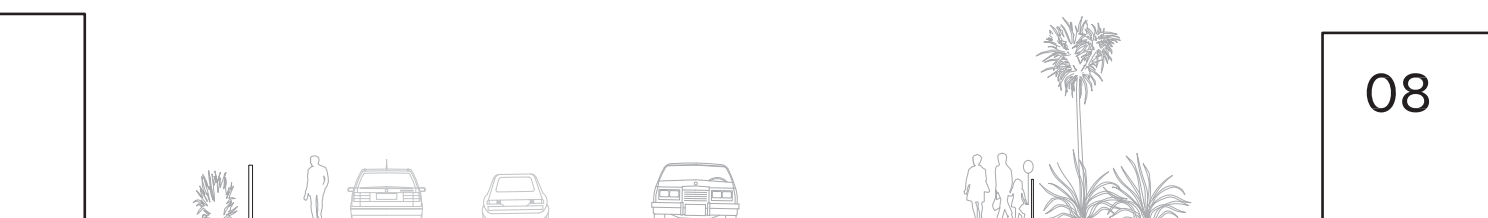
1:100 @A1



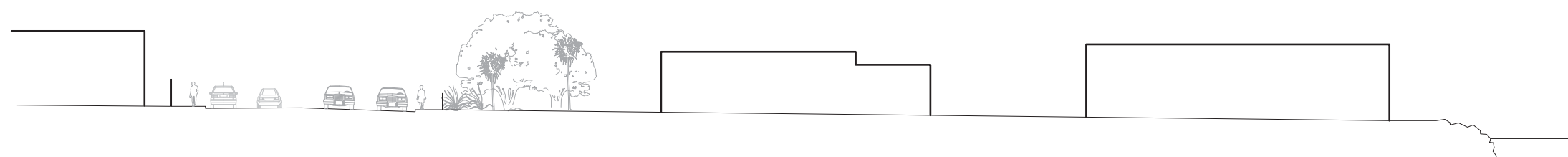
1:100 @A1



1:100 @A1



1:200 @A1



DRAFT - FOR DISCUSSION ONLY

[illegible]

drawing title:  
Site Sections Sheet 02

scale:  
as shown @ A1

drawing no.

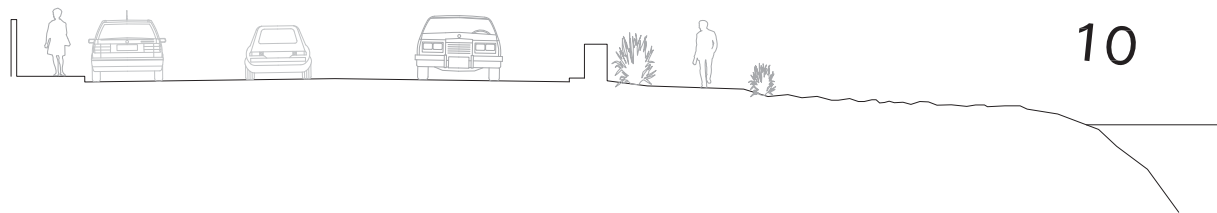
project name:  
Christchurch Coastal Pathway

client:  
CCC + CCPG

project no.  
1211

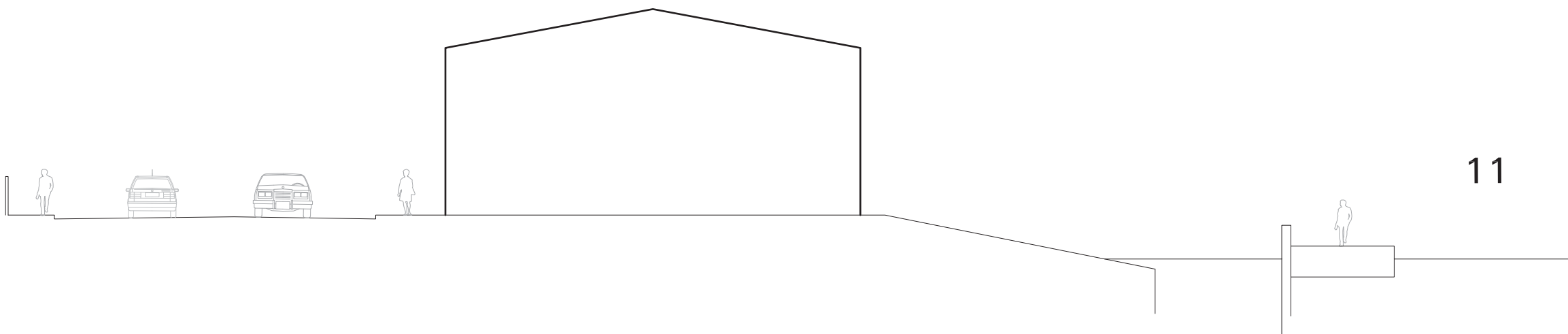


1:100 @A1



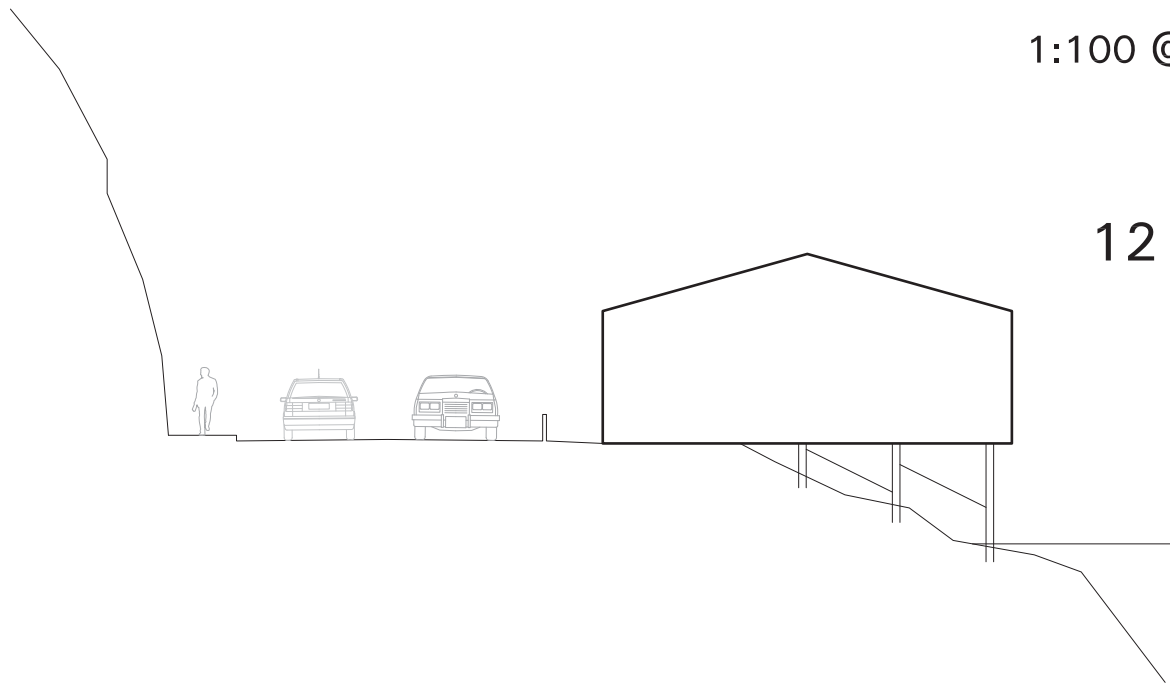
10

1:100 @A1



11

1:100 @A1



12

1:100 @A1



13

DRAFT - FOR DISCUSSION ONLY

**wā**  
Wright + Associates Limited  
Landscape Architects  
1st fl 282 Wakefield St Wellington  
PO Box 19212 Wellington  
t +64 4 381 3355  
f +64 4 381 3366  
e office@wael.co.nz  
wael.co.nz

issue	amendment	by	date

drawing title:  
Site Sections Sheet 03  
  
scale:  
as shown @ A1  
drawing no.

project name:  
Christchurch Coastal Pathway  
  
client:  
CCC + CCPG  
  
project no.  
1211



1:100 @A1

14

1:100 @A1

15

1:200 @A1

16

DRAFT - FOR DISCUSSION ONLY

14

15

16

17

18

19

20

21

22

23

24

25

26

27

28

29

30

31

32

33

34

35

36

37

38

39

40

41

42

43

44

45

46

47

48

49

50

51

52

53

54

55

56

57

58

59

60

61

62

63

64

65

66

67

68

69

70

71

72

73

74

75

76

77

78

79

80

81

82

83

84

85

86

87

88

89

90

91

92

93

94

95

96

97

98

99

100

101

102

103

104

105

106

107

108

109

110

111

112

113

114

115

116

117

118

119

120

121

122

123

124

125

126

127

128

129

130

131

132

133

134

135

136

137

138

139

140

141

142

143

144

145

146

147

148

149

150

151

152

153

154

155

156

157

158

159

160

161

162

163

164

165

166

167

168

169

170

171

172

173

174

175

176

177

178

179

180

181

182

183

184

185

186

187

188

189

190

191

192

193

194

195

196

197

198

199

200

201

202

203

204

205

206

207

208

209

210

211

212

213

214

215

216

217

218

219

220

221

222

223

224

225

226

227

228

229

230

231

232

233

234

235

236

237

238

239

240

241

242

243

244

245

246

247

248

249

250

251

252

253

254

255

256

257

258

259

260

261

262

263

264

265

266

267

268

269

270

271

272

273

274

275

276

277

278

279

280

281

282

283

284

285

286

287

288

289

290

291

292

293

294

295

296

297

298

299

300

301

302

303

304

305

306

307

308

309

310

311

312

313

314

315

316

317

318

319

320

321

322

323

324

325

326

327

328

329

330

331

332

333

334

335

336

337

338

339

340

341

342

343

344

345

346

347

348

349

350

351

352

353

354

355

356

357

358

359

360

361

362

363

364

365

366

367

368

369

370

371

372

373

374

375

376

377

378

379

380

381

382

383

384

385

386

387

388

389

390

391

392

393

394

395

396

397

398

399

400

401

402

403

404

405

406

407

408

409

410

411

412

413

414

415

416

417

418

419

420

421

422

423

424

425

426

427

428

429

430

431

432

433

434

435

436

437

438

439

440

441

442

443

444

445

446

447

448

449

450

451

452

453

454

455

456

457

458

459

460

461

462

463

464

465

466

467

468

469

470

471

472

473

474

475

476

477

478

479

480

481

482

483

484

485

486

487

488

489

490

491

492

493

494

495

496

497

498

499

500

501

502

503

504

505

506

507

508

509

510

511

512

513

514

515

516

517

518

519

520

521

522

523

524

525

526

527

528

529

530

531

532

533

534

535

536

537

538

539

540

541

542

543

544

545

546

547

548

549

550

551

552

553

554

555

556

557

558

559

560

561

562

563

564

565

566

567

568

569

570

571

572

573

574

575

576

577

578

579

580

581

582

583

584

585

586

587

588

589

590

591

592

593

594

595

596

597

598

599

600

601

602

603

604

605

606

607

608

609

610

611

612

613

614

615

616

617

618

619

620

621

622

623

624

625

626

627

628

629

630

631

632

633

634

635

636

637

638

639

640

641

642

</



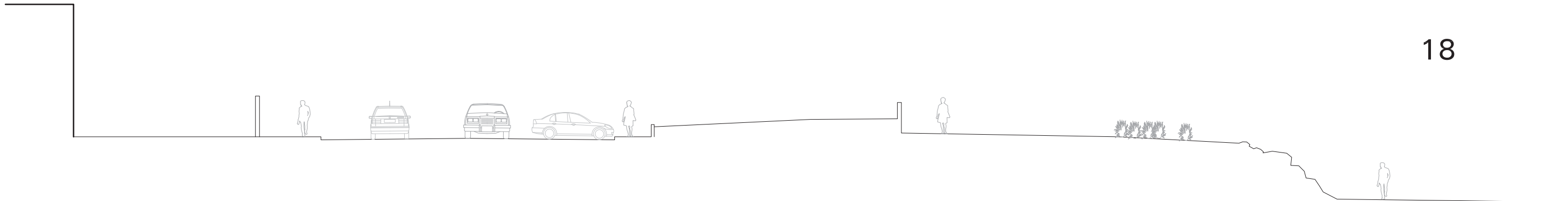
1:100 @A1

17



1:100 @A1

18



DRAFT - FOR DISCUSSION ONLY

**wā**  
Wright + Associates Limited  
Landscape Architects  
  
1/1 2 • 282 wakefield st wellington  
po box 19212 wellington  
t +64 4 381 3355  
f +64 4 381 3366  
e office@wael.co.nz  
wael.co.nz

issue	amendment	by	date

drawing title:  
Site Sections Sheet 05  
  
scale:  
as shown @ A1  
drawing no.

project name:  
Christchurch Coastal Pathway  
  
client:  
CCC + CCPG  
  
project no.  
1211