

Appendix II for the Surfbreak Protection Society submission on the Wellington Regional Policy statement Review December 2012

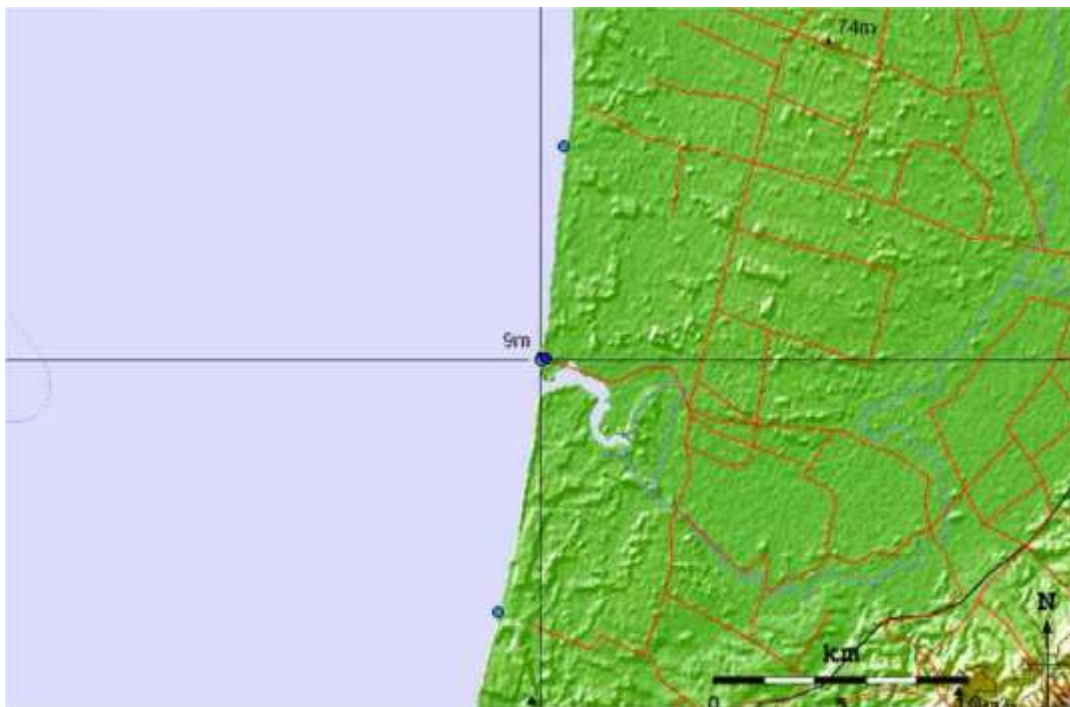
The maps below indicate a majority of Regionally significant surfbreaks, The Maps have been copied from an international database website on surfbreaks:

<http://www.surf-forecast.com/countries/New-Zealand/breaks>

The mid-blue dots signify the surfbreaks. SPS has modified the White Rock map by correcting the location of the surfbreak at White Rock which was incorrectly placed at the geographical feature, White Rock, not the Spit, at Ngapotiki. The Wellington City map has had the surfbreak Propellers added.

It is hoped that this appendix may be a starting point for adding surfbreaks to the Wellington Atlas.

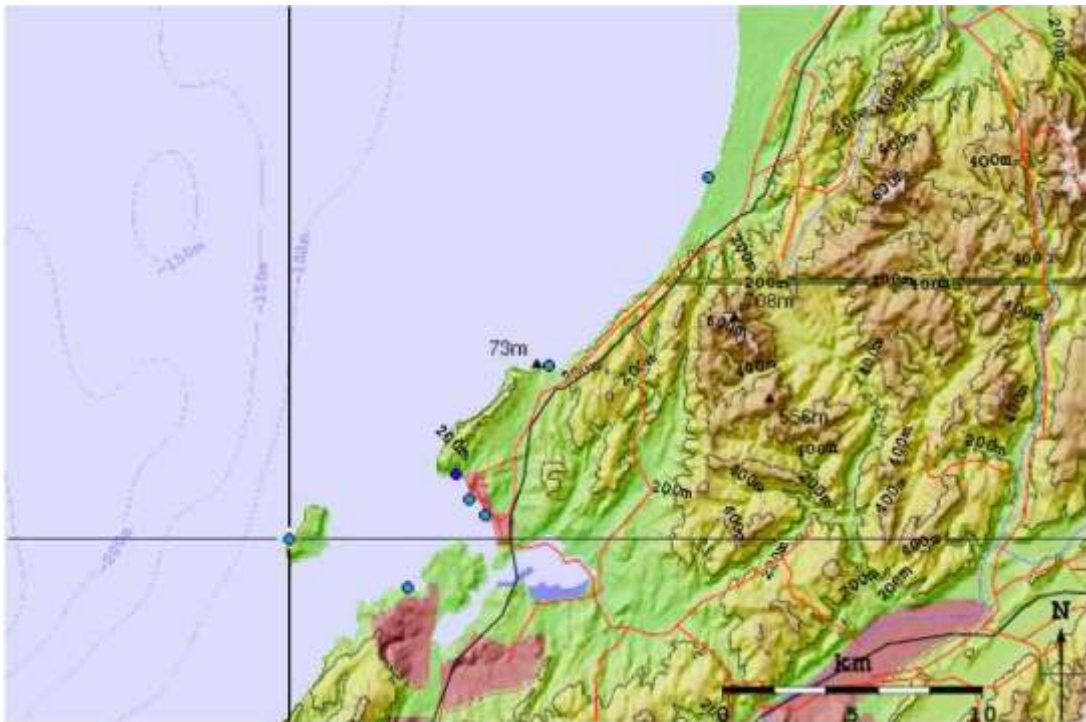
If a short list was the only option White Rock, Lyall Bay Titahi Bay and the Gap at Castlepoint would have to be included



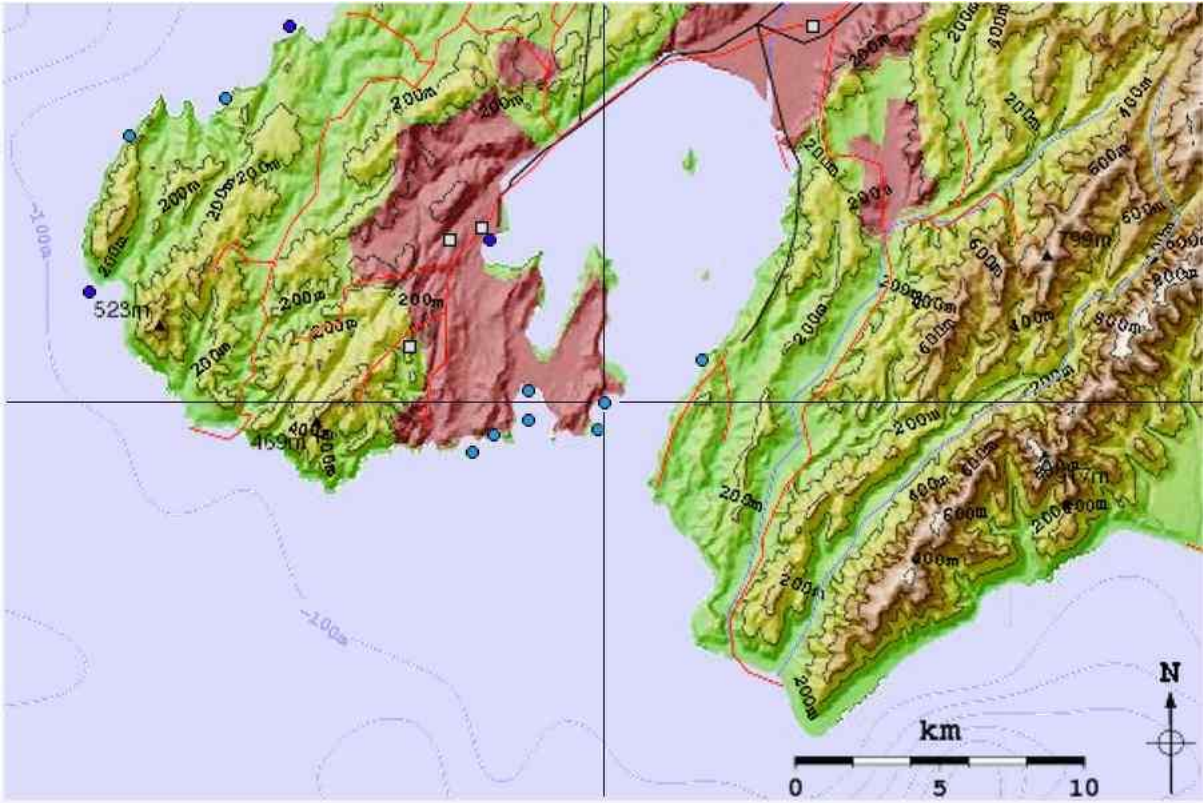
Surfbreaks from top to bottom: Himitangi Beach, Foxton Beach. and Waitarere Beach.



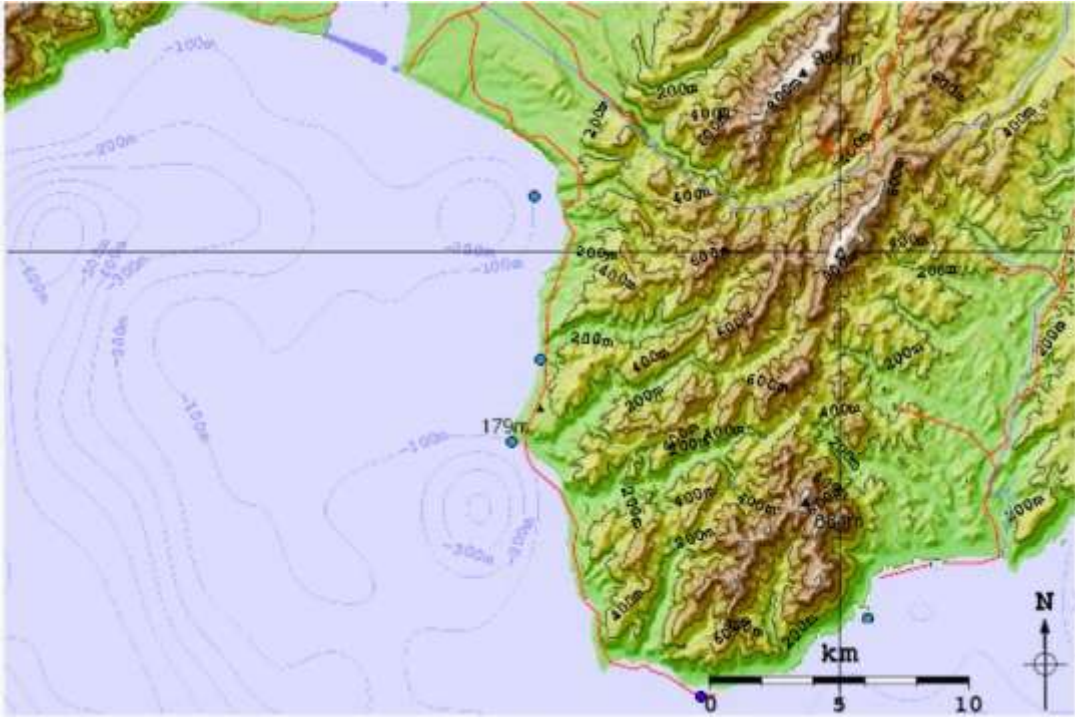
From top to bottom Otaki and Peka peka



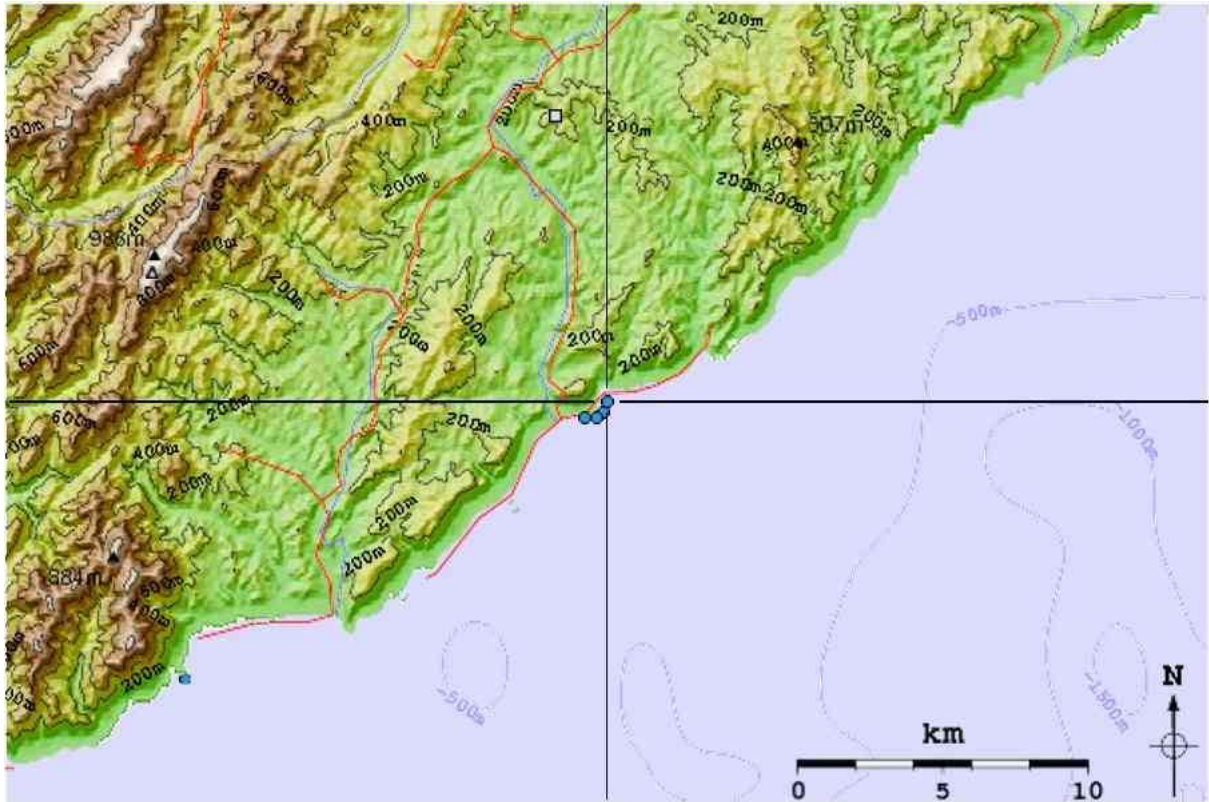
Paekakariki, Pukerua Bay, Pa Point, the Pa, and Titahi Bay



Surfbreaks From Northwest to southeast: Makara, Te Ikaamaru Bay, The Island at Island Bay, Houghton Bay, Lyall Bay Bombora, Lyall Bay (multiple surfbreaks), Propellers, Breaker Bay, and Eastbourne (the Pipes)



Whatarangi Point, Dee dees, Ning Nong and White Rock,



White Rock Shipwrecks, the toilet Bowl, Tora point and Tora Reef



From South to North; Riversdale and Whareama



Castlepoint surfbreaks from South to North: Christmas Bay, The Gap, Main Beach, and Slipperies.