

Auckland Unitary Plan Operative in part

PROPOSED PLAN CHANGE 15

Improving consistency of provisions in Chapter F Coastal, Chapter J Definitions, Appendix 7 and the viewer of the Auckland Unitary Plan (Operative in part)

Public notification: 29 November 2018

Close of submissions: 31 January 2019

This is a council initiated plan change.

In accordance with section 86B(3) of the Resource Management Act 1991 all of the proposed plan change rules have immediate legal effect.

Explanatory note – not part of proposed plan change

The proposed changes to the Auckland Unitary Plan seek to improve the consistency of provisions in Chapter F Coastal, Chapter J Definitions, Appendix 7 and the viewer of the Auckland Unitary Plan (Operative in part).

Plan change provisions

Amendments proposed by this plan change to the Auckland Unitary Plan are shown with underline for new text and ~~strikethrough~~ where existing text is proposed to be deleted. The use of ... indicates that there is more text, but it is not being changed. These are used when the whole provision is too long to be included.

Plan Change 15

Proposed amendments to Chapter F Coastal

Notes:

1. New text is shown as underline and deleted text as ~~strikethrough~~.
2. Some existing text is shown to place the changes in context.

F2. Coastal – General Coastal Marine Zone

F2.1 Zone description

The Coastal – General Coastal Marine Zone comprises ...

... [to last paragraph]

Any sites or places of significance to Mana Whenua sensitive material that are is identified prior to, or discovered during use and development activities in the coastal marine area, must comply with the accidental discovery rules in F2.21.1.4. E14 Land disturbance – Regional or E12 Land disturbance – District. Sensitive material includes human remains and kōiwi, archaeological sites, Māori cultural artefacts, protected New Zealand objects (including fossils or sub-fossils), shipwrecks or other items that may contain oil, lava caves, and unknown material on or under the foreshore or seabed such as munitions, submarine cables and pipelines.

The Plan has identified significant marine communities ...

F2.10. Taking, use and damming or diverting of coastal waters

F2.10.3. Policies [rcp]

(3) Avoid damming or impoundment of coastal water unless:

- (a) it is necessary to enable the construction, operation or maintenance of ~~significant~~ infrastructure; or
- (b) it is for habitat protection; and
- (c) a location on land or other method is not available;

F2.11. Discharges

F2.11.1 Background

Good water is fundamental to most activities undertaken in the coastal marine area and underpins the ecological health and life-supporting capacity of the marine environment.

... [To 8th paragraph]

The Council will work collaboratively with stakeholders to identify additional coastal water quality indicators and guideline values to complement the existing sediment quality threshold effects levels (for example, those in 'Blueprint for monitoring urban receiving environments, ARC Technical Publication 168 revised edition August 2004' and the 'Australian and New Zealand Guidelines for Fresh and Marine Water Quality, Australian and New Zealand Governments and Australian state and territory governments, Canberra ACT, Australia' (ANZG 2018) as they relate to sediment quality in the coastal marine area). This will help improve the evaluation of different discharge options through the resource consent process. This will be an interim measure as implementation of the National Policy Statement for Freshwater Management 2014 and marine spatial planning is likely to result in additional measures to safeguard the values of coastal receiving environments.

F2.13. Discharges from bio-fouling and vessel maintenance

F2.13.1. Background

...

Vessels arriving from overseas may be carrying organisms that are exotic to New Zealand, whereas vessels from other parts of New Zealand, or even those travelling between different places in Auckland, may further spread exotic species which are already established. These organisms may be discharged into the coastal marine area either by active ~~in-water~~ cleaning of hulls, or by passive discharge due to reproductive processes of the organisms, or by water sheering during vessel movement.

The best way to minimise the risks associated with harmful aquatic organisms is to restrict their introduction into New Zealand, limit their spread (if they are already present) by controlling the movement of fouled vessels, equipment and gear and restrict discharges from ~~in-water~~ cleaning that may include harmful aquatic organisms. The origin of a vessel adds to the risk of the spread of invasive organisms.

...

The provisions in this Section allow for the removal of microfouling from vessels, but place progressively stricter controls on vessels with higher levels of hull bio-fouling (in accordance with the Australian and New Zealand Anti-fouling and In-water Cleaning Guidelines June 2013), which is preventable if vessel maintenance is kept up to date. The provisions in this section relating to biofouling are also stricter for high value areas.

...

F2.13.2. Objectives [rcp]

- (1) The risk of introducing or spreading harmful aquatic organisms from vessel biofouling is minimised.

- (2) The risk of introducing contaminants, including harmful aquatic organisms, from the ~~in-water~~ cleaning of vessels near the shores of Hauraki Gulf Marine Park Islands which have conservation status is minimised.

F2.13.3. Policies [rcp]

- (1) Raise awareness among the boating community, particularly for vessels arriving from outside New Zealand or Auckland, of the importance of maintaining clean hulls to reduce risk of introducing or spreading harmful aquatic organisms from biofouling on vessel hulls and niche areas, and particularly during boat maintenance activities and from the passive discharge of organisms from macrofouling.
- (2) Manage ~~the in-water~~ hull and niche area cleaning and boat maintenance activities of vessels, particularly those that have a high degree of biofouling, to minimise the risk of harmful aquatic organisms being discharged into coastal water.
- (3) Avoid ~~in-water~~ hull cleaning or boat maintenance activities being undertaken on the foreshore and marine area surrounding the Hauraki Gulf conservation islands, to reduce the risk from contaminants, including harmful aquatic organisms, adversely affecting the natural values of these islands.

F2.14. Use, development and occupation in the coastal marine area

F2.14.2 Objectives

- (9) Limited expansion of existing marinas ~~existing at the date of notification~~ into the Coastal – General Coastal Marine Zone is provided for, provided there is adequate infrastructure to support the expansion and adverse effects on the coastal environment are avoided, remedied or mitigated.

F2.14.3. Policies [rcp]

- (3) Avoid use and occupation of the common marine and coastal area by activities that do not have a functional need to be undertaken in the coastal marine area below mean high water springs, unless the proposed use:
- (a) can demonstrated it needs to be located in the common marine and coastal area and cannot practicably be located on land outside of the common marine and coastal area;
 - (b) is consistent with the objectives and policies for the relevant zone or precinct;
 - (c) will enhance amenity values and not conflict with marine activities; ~~or~~ and
 - (d) any necessary land-based infrastructure can be provided.

F2.16. Structures

F2.16.3 Policies [rcp]

- (24) Avoid structures that will limit the ability to moor vessels in the Coastal – Mooring Zone, other than those structures necessary for infrastructure that have a functional or operational need to be located in the coastal marine area and that cannot practicably be located in a different location ~~outside the Coastal – Mooring Zone~~.

F2.19. Activity tables

- (1) Tables F2.19.1 to F2.19.10 specify the activity status of activities in the Coastal – General Coastal Marine Zone (GCM Zone) and the coastal marine area parts of the following overlays pursuant to sections 12(1), 12(2) and 12(3) of the Resource Management Act 1991, including any associated discharges of contaminants or water into water pursuant to section 15 of the Resource Management Act 1991, and taking, using and damming or diverting coastal water pursuant to section 14, and discharges to coastal waters pursuant to section 15 of the Resource Management Act:
- (a) D9 Significant Ecological Areas Overlay – Marine 1 and 2 (SEA-M1, SEA-M2);
 - (b) D17 Historic Heritage Overlay (HH);
 - (c) D11 Outstanding Natural Character and High Natural Character overlays (ONC) (HNC);
 - (d) D10 Outstanding Natural Features Overlay; and Outstanding Natural Landscapes Overlay (ONF) (ONL).

The abbreviations in brackets after the overlay names that are listed above, are used as references to these overlays in Tables F2.19.1 to F2.19.10.

(1A) If an activity is covered by more than one rule, then the rule that applies is the rule that is more specific for the relevant activity, area or resource. This does not apply where a proposal includes a number of activities which trigger separate specific rules. In that case, all rules are considered when assessing the proposal.

(2) The activities, standards and assessment in F2 Coastal – General Coastal Marine Zone apply in the coastal marine area of all the coastal zones and coastal precincts unless otherwise specified under the relevant zone or precinct.

Table F2.19.1 Activity table - Drainage, reclamation and declamation

Note 1

Table F2.19.1 specifies the activity status for works that reclaim or drain any foreshore or seabed, and for declamation activities in the coastal marine area. The RMA activities that this table covers are:

- Reclamation and drainage of any foreshore or seabed (RMA s12(1)(a))
- Activities that contravene a rule in the regional coastal plan (RMA s12(3))
- Disturbance of the foreshore and seabed, incidental to the activity (RMA s12(1)(c), (e), (g))
- Deposition of material in, on or under the foreshore or seabed, incidental to the activity (RMA s12(1)(d))
- Diversion of coastal water, incidental to the activity (RMA s14)
- Discharge of contaminants or water into water, incidental to the activity (RMA s15).

Table F2.19.2 Activity table - Depositing and disposal of material

Note 1

Table F2.19.2 specifies the activity status of depositing and disposal of material in the coastal marine area. The table also repeats the requirements of Regulation 4(2) of the Resource Management (Marine Pollution) Regulations 1998, which specifies that certain dumping activities must be treated as a discretionary activity in a regional coastal plan. The RMA activities that this table covers are:

- Deposition of material in, on or under the foreshore or seabed (RMA s12(1)(d))
- Disturbance of the foreshore and seabed, incidental to the activity (RMA s12(1)(c), (e), (g))
- Activities that contravene a rule in the regional coastal plan (RMA s12(3))
- Diversion of coastal water, incidental to the activity (RMA s14)
- Discharge of contaminants or water into water, incidental to the activity (RMA s15).

Activity		Activity status						
		GCM Zone	SEA-M1, ONC	ONL	SEA-M2, HNC	ONF Type A1 and A	ONF Type V1, V2, B, C, D, E, F	HH
(A7)	Coastal marine area depositing of material where the deposited sediment is extracted from within the same coastal cell: <ul style="list-style-type: none"> • maximum of 1500m³ per 12 month period 	P	D	∅ <u>RD</u>	∅ <u>P</u>	D	NC	D
(A8)	Coastal marine area depositing of material where the deposited sediment is extracted from within the same coastal cell:	RD	NC	D	D	D	NC	D

Activity		Activity status						
		GCM Zone	SEA-M1, ONC	ONL	SEA-M2, HNC	ONF Type A1 and A	ONF Type V1, V2, B, C, D, E, F	HH
	<ul style="list-style-type: none"> between 1500m³ and 10,000m³ per 12 month period 							
(A9)	Coastal marine area depositing of material from outside the coastal cell: <ul style="list-style-type: none"> maximum of 10,000m³ per 12 month period 	RD	NC	D	D	NC	NC	D
(A9A)	Coastal marine area depositing of material where the deposited sediment is extracted from within the same coastal cell: <ul style="list-style-type: none"> greater than 10,000m³ of sediment per 12 month period, where it is required for the safe and efficient operation or construction of infrastructure 	<u>D</u>	<u>NC</u>	<u>NC</u>	<u>D</u>	<u>NC</u>	<u>NC</u>	<u>NC</u>
(A10)	Coastal marine area depositing of material not otherwise provided for	D	NC	NC	NC	NC	NC	NC

Table F2.19.3 Activity table - Dredging

Note 1

Table F2.19.3 specifies the activity status of dredging activities in the coastal marine area. The RMA activities that this table covers are:

- Disturbance of the foreshore and seabed (RMA s12(1)(c), (e), (g))
- Activities that contravene a rule in the regional coastal plan (RMA s12(3))
- Diversion of coastal water, incidental to the activity (RMA s14)
- Discharge of contaminants or water into water, incidental to the activity (RMA s15).

Activity		Activity status						
		GCM Zone	SEA-M1, ONC	ONL	SEA-M2, HNC	ONF Type A1 and A	ONF Type V1, V2, B, C, D, E, F	HH
(A17)	Dredging to maintain or clear an existing lawful drainage systems involving maximum of 500m³ of material [Deleted]	P	D	RD	P	D	D	D

Activity		Activity status						
		GCM Zone	SEA-M1, ONC	ONL	SEA-M2, HNC	ONF Type A1 and A	ONF Type V1, V2, B, C, D, E, F	HH
(A18)	River mouth dredging; <ul style="list-style-type: none"> • maximum of 1500m³; or • maximum of 100m length [Deleted]	P	D	RD	RD	D	D	D
(A19)	<u>River mouth dredging</u> ; Dredging dredging to maintain or gain access to an existing lawful structure; dredging to clear the exit of any lawful stormwater outfall or pipe; or <u>to maintain or clear an</u> existing lawful drainage systems: <ul style="list-style-type: none"> • maximum of 1500m³; • maximum of 100m length 	P	D	RD	P	D	D	D
(A20)	River mouth dredging; dredging to maintain or gain access to an existing lawful structure; dredging to clear the exit of any lawful stormwater outfall or pipe; or <u>to maintain or clear an</u> existing lawful drainage systems: <ul style="list-style-type: none"> • maximum of 5000 m³; • maximum of 500m length 	RD	NC	RD	RD	NC	NC	NC
(A21)	River mouth dredging; dredging to maintain or gain access to an existing lawful structure; dredging to clear the exit of any lawful stormwater outfall or pipe; or <u>to maintain or clear an</u> existing lawful drainage systems not otherwise provided for	D	NC	D	D	NC	NC	NC

Table F2.19.4 Activity table – Coastal marine area disturbance

Note 1

Table F2.19.4 specifies the activity status of activities that disturb any foreshore or seabed (including by excavating, drilling, or tunnelling, but excluding dredging). The RMA activities that this table covers are:

- Disturbance of the foreshore and seabed (RMA s12(1)(c), (e), (g))
- Removal of sand, shingle, shell or other natural material from the common marine and coastal area (RMA s12(2)(b))
- Deposition of material in, on or under the foreshore or seabed, incidental to the activity (RMA s12(1)(d))
- Activities that contravene a rule in the regional coastal plan (RMA s12(3))
- Diversion of coastal water, incidental to the activity (RMA s14)
- Discharge of contaminants or water into water, incidental to the activity (RMA s15).

Note 2

Any disturbance of the foreshore or seabed incidental to the construction, placement, alteration, removal or demolition of structures is addressed by Table F2.19.10.

Note 4 3

Activities regulated by the Resource Management (National Environmental Standards for Electricity Transmission Activities) Regulations 2009 are not affected by the provisions below.

Activity	Activity status						
	GCM Zone	SEA-M1, ONC	ONL	SEA-M2, HNC	ONF Type A1 and A	ONF Type V1, V2, B, C, D, E, F	HH
...							
(A32) Coastal marine area disturbance that is: <ul style="list-style-type: none"> • not otherwise provided for and meets the standards; or • associated with removal of litter or marine debris; or • associated with removal of sediment, vegetation and encrusting organisms from any existing lawful coastal marine area structures; or • associated with the burial of dead marine mammals; or • associated with control or eradication of any exotic or introduced plant or animal species; or • associated with operation, 	P	P	P	P	P	P	P

Activity		Activity status						
		GCM Zone	SEA-M1, ONC	ONL	SEA-M2, HNC	ONF Type A1 and A	ONF Type V1, V2, B, C, D, E, F	HH
	<p>maintenance, repair or reconstruction of existing lawful Coastal marine area structures or buildings; or</p> <ul style="list-style-type: none"> associated with minor infrastructure upgrading. 							
(A33)	Coastal marine area disturbance that is associated with movement of up to 1500m ³ of sediment per <u>calendar year 12 month period</u> within the same coastal cell	P	D	D	D	D	NC	D
(A34)	Coastal marine area disturbance that is associated with movement of between 1500m ³ and 10,000m ³ of sediment per <u>calendar year 12 month period</u> within the same coastal cell	RD	NC	D	D	D	NC	NC
(A35)	Coastal marine area disturbance associated with movement greater than 10,000m ³ of sediment per <u>calendar year 12 month period</u> within the same coastal cell, where it is required for the safe and efficient operation or construction of significant infrastructure	D	NC	NC	D	NC	NC	NC
(A36)	Coastal marine area disturbance associated with movement greater than 10,000m ³ of sediment per <u>calendar year 12 month period</u> within the same coastal cell	D	NC	NC	NC	NC	NC	NC
(A37)	Coastal marine area disturbance that is not otherwise provided for	D	NC	NC	NC	NC	NC	NC

Table F2.19.5 Activity table - Planting in the coastal marine area

Note 1

Table F2.19.5 specifies the activity status of planting in the coastal marine area. The RMA activities that this table covers are:

- Planting exotic or introduced plants in the coastal marine area (RMA s12(1)(f))
- Planting native plants (activities that contravene a rule in the regional coastal plan) (RMA s12(3))
- Disturbance of the foreshore or seabed, incidental to the activity (RMA s12(1)(c), (e), (g)).

Activity	Activity status						
	GCM Zone	SEA-M1, ONC	ONL	SEA-M2, HNC	ONF Type A1 and A	ONF Type V1, V2, B, C, D, E, F	HH
...							

Table F2.19.6 Activity table - Taking, use and damming or diverting coastal water

Note 1

Table F2.19.6 specifies the activity status of taking, use and damming or diverting coastal water. The RMA activities that this table covers are:

- Taking, using, damming or diverting coastal water (RMA s14)

Activity	Activity status						
	GCM Zone	SEA-M1, ONC	ONL	SEA-M2, HNC	ONF Type A1 and A	ONF Type V1, V2, B, C, D, E, F	HH
...							

Table F2.19.7 Activity table - Discharges to the coastal marine area

Note 1

Table F2.19.7 specifies the activity status of discharges to the coastal marine area, other than where it is incidental to an activity provided for in another table. The RMA activities that this table covers are:

- Discharge of contaminants or water into water (RMA s15)
- Activities that contravene a rule in the regional coastal plan (RMA s12(3))

Note 2

Additional biosecurity obligations may apply with respect to biofouling. International vessels arriving in New Zealand waters will have additional obligations under the Craft Risk Management Standard: Biofouling on Vessels Arriving to New Zealand (May 2014).

Activity		Activity status						
		GCM Zone	SEAM1, ONC	ONL	SEAM2, HNC	ONF Type A1 and A	ONF Type V1, V2, B, C, D, E, F	HH
...								
(A62)	Discharges into the coastal marine area, which are not covered by subject to another rule in the Unitary Plan, and not covered by subject to the Resource Management (Marine Pollution) Regulations 1998, that comply with the permitted activity standards	P	P	P	P	P	P	P
...								
(A64)	Discharges from firefighting and other emergency response activities undertaken by the New Zealand Fire Service Fire and Emergency New Zealand (including discharges of hazardous substances)	P	P	P	P	P	P	P
...								
(A70)	Discharges into coastal water not otherwise authorised by a rule in the Plan, or covered by subject to the Resource Management (Marine Pollution) Regulations 1998, that do not comply with the permitted activity standards	D	NC	D	D	D	NC	D
(A71)	Discharge of hull bio-fouling organisms resulting from in-water cleaning of a vessel with micro-fouling (LOF 0-1) and goose barnacles (standards to be complied with: Standard F2.21.8.7 (1), (2), (5) and	P	Pr	P	P(HNC) Pr (SEA – M2)	P	P	P

Activity		Activity status						
		GCM Zone	SEAM1, ONC	ONL	SEAM2, HNC	ONF Type A1 and A	ONF Type V1, V2, B, C, D, E, F	HH
	(7)							
(A72)	Discharge of hull bio-fouling organisms resulting from: <ul style="list-style-type: none"> • the in-water small scale manual removal (up to 5 per cent of the hull surface area, including niche areas) of <u>macro-fouling not provided for in Rule (A71) or (A73) bio-fouling organisms;</u> or • <u>cleaning of a vessel with macro-fouling where the fouling is:</u> <ul style="list-style-type: none"> ○ <u>of international origin; or</u> ○ <u>of domestic origin but more than low biosecurity risk or has not had a risk assessment (or extensive to very heavy macro-fouling)</u> (standards to be complied with: Standard F2.21.8.7 (2), (3), (4), (5) and (7))	P	Pr	P	P(HNC) Pr (SEA – M2)	D	P	P
(A73)	Discharge of hull bio-fouling organisms resulting from in-water cleaning of a vessel with macro-fouling where the fouling is: <ul style="list-style-type: none"> • <u>from within Auckland; or</u> • <u>of domestic origin following a risk assessment that determined a relative biosecurity risk of negligible or low</u> (standards to be complied with: Standard F2.21.8.7 (2), (5) and (7))	P	Pr	P	P(HNC) Pr (SEA – M2)	D	P	P
(A74)	Discharge of hull bio-fouling organisms resulting from in-water cleaning of a vessel with macro-fouling of domestic origin following a risk assessment that determined a relative biosecurity risk of	P	Pr	P	P(HNC) Pr (SEA – M2)	D	P	P

Activity		Activity status						
		GCM Zone	SEAM1, ONC	ONL	SEAM2, HNC	ONF Type A1 and A	ONF Type V1, V2, B, C, D, E, F	HH
	negligible or low (standards to be complied with: Standard F2.21.8.7 (2), (5) and (7)) [Deleted]							
(A75)	Discharge of hull bio-fouling organisms resulting from in-water cleaning of a vessel with macrofouling where the fouling is: <ul style="list-style-type: none"> • of international origin; or • of domestic origin but more than low biosecurity risk or has not had a risk assessment (or extensive to very heavy macrofouling) (standards to be complied with: Standard F2.21.8.7 (2), (3), (4), (5) and (7)) [Deleted]	P	Pr	P	P (HNC) Pr (SEA – M2)	D	P	P
(A76)	Discharges associated with in water treatment methods that render bio-fouling organisms non-viable (standards to be complied with: Standard F2.21.8.7 (2), (6) and (7))	P	Pr	P	P(HNC) Pr (SEA – M2)	D	P	P
(A77)	Discharge of any contaminant resulting from in-water cleaning, the application of anti-fouling, or painting of vessels, including discharge of hull bio-fouling organisms, within 500m of mean high water springs of the following Hauraki Gulf conservation islands: <ul style="list-style-type: none"> • Beehive Island; • Browns Island; • Little Barrier Island; • Mokohinau Islands; • Motuihe Island; • Motuora Island; • Motutapu Island; 	Pr	Pr	Pr	Pr	Pr	Pr	Pr

Activity	Activity status						
	GCM Zone	SEAM1, ONC	ONL	SEAM2, HNC	ONF Type A1 and A	ONF Type V1, V2, B, C, D, E, F	HH
<ul style="list-style-type: none"> Rangitoto Island; Saddle (Te Haupa) Island; The Noises Islands; and Tiritiri Matangi Island. 							
(A78) Discharge of hull bio-fouling organisms resulting from in-water cleaning of a vessel not otherwise provided for	RD	Pr	RD	RD (HNC) Pr (SEA – M2)	RD	RD	RD
(A79) Passive discharge of hull bio-fouling organisms from a commercial or military vessel	P	P	P	P	P	P	P
(A80) Passive discharge from a non-commercial and non-military vessel with: <ul style="list-style-type: none"> light to very heavy macro-fouling of international origin (level of fouling scale 2 to 5);<u>or</u> very heavy macro-fouling of domestic origin (level of fouling scale 4 to 5);<u>or</u> <u>unusual or suspected harmful aquatic organisms (or species designated as pests in the relevant pest management plan prepared under the Biosecurity Act).</u> 	D	D	D	D	D	D	D
(A81) Passive discharge from a non-commercial and non-military vessel with unusual organisms or suspected harmful aquatic organisms (or species designated as pests in the relevant pest management plan prepared under the Biosecurity Act) [Deleted]	D	D	D	D	D	D	D
(A82) Passive discharge of hull bio-fouling organisms resulting from its presence, not otherwise provided for	P	P	P	P	P	P	P

Table F2.19.8 Activity table – Use and activities

Note 1

Table F2.19.8 specifies the activity status of uses and activities in the coastal marine area. The RMA activities that this table covers are:

- Activities that contravene a rule in the regional coastal plan (RMA s12(3))
- Disturbance of the foreshore and seabed, incidental to the activity (RMA s12(1)(c), (e), (g))
- Occupation of the common marine and coastal area by the activity (RMA s12(2)(a))
- Discharge of contaminants or water into water, incidental to the activity (RMA s15).

Note 2

In this table, unless specified otherwise, the activity status for occupation of the common marine and coastal area (RMA section 12(2)) has the same activity status as the use or activity (RMA section 12(3)) that the occupation relates to.

Note 4 3

This table does not apply to any use, activities and or occupation related to structures that is more specifically covered by Activity table F2.19.10.

Note 2 4

The activity status for 'underwater blasting, impact and vibratory piling, marine seismic surveys' relates to the generation of underwater noise from these activities. These activities are generally part of other activities (for example, dredging, demolition, construction, mineral exploration). For the avoidance of doubt, the activity status of the other activity continues to apply, unless the activity is permitted or controlled, in which case the overall activity status becomes restricted discretionary.

Note 5

Rule F2.19.8(A87) does not apply if an activity is in accordance with an agreement with the party who holds the existing occupation consent.

Note 6

Occupation consents do not provide for exclusive occupation unless that is specifically sought in an application and provided for in a resource consent. Exclusive occupation is associated with a use and/or a structure. The activity status of occupation for the use or structure applies to exclusive occupation, unless the activity is permitted, in which case exclusive occupation is a discretionary activity under rule (A114A).

Activity		Activity status						
		GCM Zone	SEA-M1, ONC	ONL	SEA-M2, HNC	ONF - Type A1 and A	ONF - Type V1, V2, B, C, D, E, F	HH
(A83)	Public access, passive recreation, navigation and general use <u>Use of the coastal marine area not otherwise provided for in the Plan and that does not involve occupation of the common marine and coastal area</u>	P	P	P	P	P	P	P
(A84)	Use of the coastal marine area and/or occupation of the common marine and coastal area and associated use by activities which have a functional need to be below mean high water springs and that are not otherwise provided for in this table or in table F2.19.10	D	D	D	D	D	D	D
(A85)	Use of the coastal marine area and/or occupation of the common marine and coastal area by new or existing unlawful activities that do not have a functional need to be undertaken below mean high water springs in the coastal marine area, including activities in, or on, an existing building or structure, and that are not otherwise provided for	NC	NC	NC	NC	NC	NC	NC
...								
(A114)	Underwater blasting, impact and vibratory piling, marine seismic surveys	RD	RD	RD	RD	RD	RD	RD
(A114A)	<u>Exclusive occupation of the common marine and coastal area by a structure or activity that would otherwise be a permitted activity</u>	<u>D</u>	<u>D</u>	<u>D</u>	<u>D</u>	<u>D</u>	<u>D</u>	<u>D</u>

Table F2.19.9 Activity table - Aquaculture activities

Note 1

Table F2.19.9 specifies the activity status of aquaculture activities in the coastal marine area. The RMA activities that this table covers are:

- Construction, placement, alteration, removal or demolition of structures used for aquaculture activities (RMA s12(1)(b))
- Disturbance of the foreshore and seabed, incidental to the aquaculture activities (RMA s12(1)(c), (e), (g))
- Deposition of material in, on or under the foreshore or seabed, incidental to the aquaculture activities (RMA s12(1)(d))
- Occupation of the common marine and coastal area by the aquaculture activities (RMA s12(2)(a))
- Activities that contravene a rule in the regional coastal plan (RMA s12(3))
- Discharge of contaminants or water into water, incidental to the aquaculture activities (RMA s15).

Activity		Activity status						
		GCM Zone	SEAM1, ONC	ONL	SEAM2, HNC	ONF Type A1 and A	ONF Type V1, V2, B, C, D, E, F	HH
(A115)	<u>New aquaculture Aquaculture activities (new)</u>	D	NC	NC	NC	NC	NC	NC
(A116)	<u>Re-consenting lawfully established aquaculture Aquaculture activities (reconsenting an established aquaculture activity)</u>	RD	RD	RD	RD	RD	RD	RD
(A117)	<u>Aquaculture activities mMinor extension of a lawfully established aquaculture activity activities limited to a maximum of 25 percent of the size of the originally consented current farm</u>	RD	D	D	D	D	D	D
(A118)	<u>Aquaculture activities mMinor realignment of an lawfully established aquaculture activities limited to moving 1/3 of the farm area, while 2/3 of the farm area stays within the same space as originally consented</u>	RD	D	D	D	D	D	D
(A119)	<u>Experimental aquaculture activities that are a maximum of 1ha and 10 years in duration</u>	RD	NC	NC	NC	NC	NC	NC
(A120)	<u>Aquaculture activities not otherwise provided for</u>	D	NC	NC	NC	NC	NC	NC

Table F2.19.10 Activity table – Structures

Note 1

~~Unless otherwise specified, activities listed in Table F2.19.10 include construction (pursuant to section 12(1) of the Resource Management Act 1991) and occupation (pursuant to section 12(2) of the Resource Management Act 1991). Use of a structure (pursuant to 12(3) of the Resource Management Act 1991) has the activity status listed in this table unless it is addressed more specifically in Table F2.19.8.~~

Table F2.19.1 specifies the activity status for structures in the coastal marine area. The RMA activities that this table covers are:

- Construction, placement, alteration, removal or demolition of structures (RMA s12(1)(b))
- Occupation of the common marine and coastal area by the structure (RMA s12(2)(a))
- Disturbance of the foreshore and seabed, incidental to the activity (RMA s12(1)(c), (e), (g))
- Deposition of material in, on or under the foreshore or seabed, incidental to the activity (RMA s12(1)(d))
- Use of structures (activities that contravene a rule in the regional coastal plan) (RMA s12(3)), unless the use is addressed more specifically in Table F2.19.8
- Diversion of coastal water, incidental to the activity (RMA s14)
- Discharge of contaminants or water into water, incidental to the activity (RMA s15).

Note 2

In this table, unless specified otherwise, the activity status for occupation of the common marine and coastal area (section 12(2) of the Resource Management Act 1991) has the same activity status as for the construction of a structure (section 12(1) of the Resource Management Act 1991) that the occupation relates to.

Note 3

The activity status for a new consent for an existing structure (re-consenting its use of the coastal marine area pursuant to section 12(3) and its occupation of space in the common marine and coastal area pursuant to section 12(2) of the Resource Management Act 1991) has the same activity status as construction of that structure listed in this table.

Note 4

Provisions relating to moorings in the Coastal – General Coastal Marine Zone are contained in the F4 Coastal – Mooring Zone and moorings outside the Coastal – Mooring Zone.

Note 5

Activities regulated by the Resource Management (National Environmental Standards for Electricity Transmission Activities) Regulations 2009 are not affected by the provisions below.

Activity		Activity status						
		GCM Zone	SEAM1, ONC	ONL	SEAM2, HNC	ONF Type A1 and A	ONF Type V1, V2, B, C, D, E, F	HH
(A121)	Construction of coastal Coastal marine area structures and buildings unless provided for elsewhere <u>in this table (see table F2.19.8 for the use of the structure)</u>	D	NC	NC	NC	NC	NC	NC
(A122)	Maintenance, repair or reconstruction of existing lawful coastal marine area structures or buildings	P	P	P	P	P	P	Refer HH activity tables
(A123)	Extension or alteration of existing lawful coastal marine area structures or buildings other than those that are a component of infrastructure <u>(including the use of the extended or altered structure or building)</u>	RD	NC	NC	D	NC	NC	Refer HH activity tables
(A124)	Extension or alteration of existing lawful coastal marine area structures or buildings that are a component of infrastructure <u>(other than as provided for as minor infrastructure upgrading of network utilities)</u>	RD	D	D	D	D	D	Refer HH activity tables
...								
(A127)	Occupation associated with coastal marine area structures located below the surface of the foreshore and seabed in areas <u>(other than cables located within the cable protection areas (as identified on the planning maps))</u>	RD	RD	RD	RD	RD	RD	D
...								
(A131)	Minor infrastructure upgrades <u>upgrading of network utilities</u>	P	P	P	P	P	P	P
..								

(A135)	Cables including their extension and alteration located within the cable protection areas (as identified on the planning maps) including their extension and alteration, and including the occupation by cables located below the surface of the foreshore and seabed	P	P	P	P	P	P	P
...								
(A139)	Marine and port facilities and buildings not on an existing wharf or existing coastal marine area structure	D	NC	NC	D	NC	NC	D
(A140)	Marine and port accessory structures and services not on an existing wharf or existing coastal marine area structure	D	NC	D	D	NC	NC	D
...								
(A145)	<u>Boat ramps</u>	<u>D</u>	<u>NC</u>	<u>D</u>	<u>D</u>	<u>NC</u>	<u>NC</u>	<u>D</u>

...

F2.21. Standards

F2.21.1. All permitted activities, controlled activities and restricted discretionary activities

All activities listed as ...

F2.21.1.4. Accidental discovery rule

- (1) Despite any other rule in this Plan permitting activities in the coastal marine area, including any disturbance of the foreshore or seabed, in the event of discovery of sensitive material which is not expressly provided for by any resource consent or other statutory authority, the standards and procedures set out in this rule must apply.
- (2) For the purpose of this rule, 'sensitive material' means:
 - (a) human remains and kōiwi;
 - (b) an archaeological site;
 - (c) a Māori cultural artefact/taonga tuturu;
 - (d) a protected New Zealand object as defined in the Protected Objects Act 1975 (including any fossil or sub-fossil);
 - (e) shipwrecks or other items that may contain oil;

- (f) a lava cave greater than 1m in diameter on any axis; or
 - (g) munitions on or under the foreshore or seabed,
 - (h) cables or pipelines on or under the foreshore or seabed.
- (3) On discovery of any sensitive material, the party undertaking the relevant permitted activity or the consent holder must take the following steps:

Cease works and secure the area

- (a) immediately cease all works within 20m of any part of the discovery, including shutting down all foreshore and seabed disturbing machinery and stopping all earth moving activities, and in the case of shipwrecks or other items that may contain oil, apply controls to minimise discharge of contaminants into the environment;
- (b) secure the area of the discovery, including a sufficient buffer area to ensure that all sensitive material remains undisturbed;

Inform relevant authorities and parties

- (c) inform the following parties immediately of the discovery:
 - (i) the New Zealand Police if the discovery is of human remains or kōiwi;
 - (ii) the Council in all cases;
 - (iii) Heritage New Zealand Pouhere Taonga if the discovery is an archaeological site, Māori cultural artefact, human remains or kōiwi;
 - (iv) Mana Whenua if the discovery is an archaeological site of Māori origin, Māori cultural artefact, or kōiwi;
 - (v) the New Zealand Defence Force and the New Zealand Police if the discovery is munitions; and
 - (vi) Maritime New Zealand and the owner of the submarine cable or pipeline (if the owner can be determined) if the discovery is a submarine cable or pipeline.

Wait for and enable inspection of the site

- (d) wait for and enable the site to be inspected by the relevant authority or agency:
 - (i) if the discovery is human remains or kōiwi the New Zealand Police are required to investigate the human remains to determine whether they are those of a missing person or are a crime scene. The remainder of

this process will not apply until the New Zealand Police confirm that they have no further interest in the discovery; or

- (ii) if the discovery is of sensitive material, (other than items that may contain oil, munitions, cables or pipelines), a site inspection for the purpose of initial assessment and response will be arranged by the Council in consultation with Heritage New Zealand Pouhere Taonga and appropriate Mana Whenua representatives; or
 - (iii) if the discovery is a shipwreck or other item that may contain oil, a suitably qualified and experienced person is required to complete an initial assessment and provide information to the Council on the assessment and response; or
 - (iv) if the discovery is munitions, the New Zealand Defence Force and the New Zealand Police will complete an initial assessment and provide information to the Council on the assessment and response; or
 - (v) if the discovery is a submarine cable or pipeline, take best endeavours to inform the owner of the submarine cable or pipeline to confirm the status and purpose of the cable or pipeline, and to determine whether it is still operational or is redundant. If the cable or pipeline is still operational, obtain approval from the owner for the work to proceed. Inform Maritime New Zealand so that they can assess whether there has been an offence under the Submarine Cables and Pipelines Protection Act 1996. This standard does not apply to the discovery of a submarine cable or pipeline owned or operated by the organisation undertaking the works.
- (e) following site inspection and consultation with all relevant parties (including the party undertaking the relevant permitted activity or the consent holder as relevant), the Council will determine the area within which work must cease, and any changes to controls on discharges of contaminants, until the requirements of step F2.21.1.4(3)(f) are met;

Resumption of work

- (f) work within the area determined by the Council at step F2.21.1.4(3)(e) must not recommence until all of the following requirements, so far as relevant to the discovery, have been met:
- (i) Heritage New Zealand has confirmed that an archaeological authority has been approved for the work or that none is required;
 - (ii) any required notification under the Protected Objects Act 1975 has been made to the Ministry for Culture and Heritage;

- (iii) any changes to controls on discharges of contaminants have been implemented;
- (iv) any material of scientific or educational importance has been recorded and if appropriate recovered and preserved;
- (v) if the discovery is a lava cave as outlined in F2.21.1.4(2)(f) above and if the site is assessed to be regionally significant, reasonable measures have been taken to minimise adverse effects of the works on the scientific values of the site;
- (vi) where the site is of Māori origin and an authority from Heritage New Zealand Pouhere Taonga is not required the Council will confirm, in consultation with Mana Whenua, that:
 - any kōiwi have either been retained where discovered or removed in accordance with the appropriate tikanga; and
 - any agreed revisions to the planned works to be/have been made in order to address adverse effects on Māori cultural values.
- (vii) resource consent has been granted for any alteration or amendment to the activity that may be necessary to avoid the sensitive materials and that is not otherwise permitted under the Plan or allowed by any existing resource consent;
- (viii) that there are no requirements in the case of archaeological sites that are not of Māori origin and are not covered by the Heritage New Zealand Pouhere Taonga Act 2014; and
- (ix) if the discovery is munitions, the New Zealand Police and New Zealand Defence Force have confirmed that the site is safe for operations to resume; and
- (x) if the discovery is cables or pipelines, the asset owner (if identified) has confirmed that operations can resume, and Maritime New Zealand has been informed so that they can determine whether there has been an offence under the Submarine Cables and Pipelines Protection Act 1996.

F2.21.2. Standards - Drainage, reclamation and declamation

Activities listed as a permitted activity and restricted discretionary activity in Table F2.19.1 must comply with the standards in F2.21.1 and the standards in F2.21.2.

F2.21.2.1. Maintenance or repair of a lawful reclamation or drainage system

- (1) The work must not change the area occupied by the reclamation or drainage system.
- (2) Any visible disturbance to the substrate of the coastal marine area must be remedied or restored within 48 hours of the completion of the works in areas identified as D11 Outstanding Natural Character Overlay, D10 Outstanding Natural Features Overlay and D9 Significant Ecological Area Overlay – Marine 1 and within seven days in other areas of the coastal marine area.
- (3) There must be an emergency spill plan in place to address the unforeseen release of contaminants from equipment being used for the activity.
- (4) All equipment and materials must be removed from the foreshore and seabed on the completion of works or activities.
- (5) Written advice must be given to the Council at least 10 working days prior to the work starting.
- (6) The work must not alter the form or external appearance of the reclamation or drainage system in more than a minor way.

F2.21.2.2. Minor reclamation for the purpose of maintaining, repairing or upgrading a reclamation

- (1) The outside face of the new seawall must not extend more than 1.5m beyond the seaward limit of the existing seawall or bund.

...

F2.21.4. Standards – Dredging

Activities listed as permitted or restricted discretionary in Table F2.19.3 must comply with the standards in F2.21.1 and the standards in F2.21.4.

Note 1

Channel clearance activities outside the coastal marine area are covered in E3 Lakes, rivers, streams and wetlands.

F2.21.4.1. Dredging: River mouth dredging; dredging to maintain or gain access to an existing lawful structure; and dredging to clear the exit of any lawful stormwater outfall or pipe

- (1) Dredging must not take place within 100m of a previously dredged site unless a minimum of two months has elapsed since the completion of dredging at that site.
- (2) Impounded water must be released in a way that minimises any potential contamination of receiving waters.
- (3) Best practicable dredging methods must be used in order to minimise sediment mobilisation and dispersal.
- (4) No dredged material may be deposited in the coastal marine area or on land where it could re-enter a water body unless depositing of that material is listed in this plan as a permitted activity or has a resource consent.
- (5) Upon completion of dredging, all equipment and litter must be removed.

- (6) Written advice must be given to the Council at least 10 working days prior to the work starting.

F2.21.4.2. Dredging to maintain or clear an existing lawful drainage system

- (1) The activity may only take place adjacent to land that is continuous with land that has a rural zone.
- (2) ~~The volume of material cleared must not exceed 500m³. [Deleted]~~
- (3) There must be no diversion of any part of the channel to a different course.
- (4) There must be no deepening or widening of the channel beyond the limits of its original profile.
- (5) Any visible disturbance to the surrounding coastal marine area must be remedied or restored within seven days.
- (6) Best practicable dredging methods must be used in order to minimise sediment mobilisation and dispersal
- (7) In identified wading bird areas (Appendix 5 Wading bird areas), dredging and drainage clearance must be timed to avoid bird nesting seasons and avoid adverse effects on birds using roosting areas and must not damage or disturb areas of salt marsh or nesting or roosting birds, or other indigenous biota.
- (8) No dredged material may be deposited in the coastal marine area or on land where it could re-enter a water body unless the deposition of that material is listed in this plan as a permitted activity or has a resource consent.
- (9) Upon completion of dredging, all equipment and litter must be removed.
- (10) Written advice must be given to the Council at least 10 working days prior to the work starting.
- (11) ~~In significant wading bird areas as identified in Appendix 5 Wading bird areas dredging must be timed to avoid bird nesting seasons and avoid adverse effects on birds using roosting areas and must not damage or disturb areas of salt marsh or nesting or roosting birds, or other indigenous biota. [Deleted]~~

...

F2.21.8. Standards – Discharges

...

F2.21.8.1 All permitted activities (other than discharges from firefighting and other emergency response activities undertaken by ~~the New Zealand Fire Service~~ Fire and Emergency New Zealand)

...

F2.21.8.7. Discharges of hull bio-fouling organisms from ~~in-water~~ cleaning of vessels

Rule	Activity	Standards
(A71)	Removal of micro-fouling (LOF 0-1) and goose barnacles	(1), (2), (5) and (7)

(A72)	Small scale manual removal of macro-fouling (up to 5 per cent of the hull surface area, including niche areas) not provided for in Rule A71 or A73	(2), (3), (5) and (7)
(A72)	Removal of macro-fouling where the fouling is: <ul style="list-style-type: none"> • <u>of international origin; or</u> • <u>of domestic origin but more than low biosecurity risk or has not had a risk assessment (or extensive to very heavy macro-fouling)</u> 	(2), (3), (5) and (7)
(A73)	Removal (including small scale manual removal) of macro-fouling where the fouling is: <ul style="list-style-type: none"> • <u>from within Auckland; or</u> • <u>of domestic origin following a risk assessment that determined a relative biosecurity risk of negligible or low</u> 	(2), (5) and (7)
(A76)	Treatment methods that render bio-fouling organisms non-viable	(2), (6) and (7)

- (1) Gentle non-abrasive cleaning techniques must be used.
- (2) The cleaning method will not compromise the existing anti-fouling coating system.
- (3) ~~In water e~~ Cleaning technologies should capture debris to a minimum of greater than 50 micrometers micrometres in diameter. All captured debris shall be collected and disposed of appropriately.
- (4) ~~Any debris is collected and appropriately disposed of. [Deleted]~~
- (5) If unusual or suspected harmful aquatic organisms (or species designated as pests in the relevant pest management plan prepared under the Biosecurity Act) are found, the vessel owner or operator must take the following steps:
 - (a) all cleaning must cease;
 - (b) the Council must be immediately notified; and
 - (c) cleaning may not recommence until notified by Council to do so.

Note 1

Council may contact the Ministry for Primary Industries for advice on the nature of the species and the appropriate measures to be taken.

- (6) The discharge or escape of hull bio-fouling organisms or debris onto the foreshore, seabed or into the water must be collected as far as practicable and removed from the coastal marine area.
- (7) The anti-fouling coating on the hull and niche areas to be cleaned shall not have exceeded its planned service life as specified by the manufacturer.

Notes: The standards apply to the above activities according to the level of risk associated with the origin and extent of the biofouling.

- (1) Cleaning of low-level fouling, fouling of regional origin (from within Auckland) and fouling of domestic (NZ) origin that has been assessed and confirmed as low-risk are considered low-risk activities and are encouraged through less stringent standards. Capture of debris is not required.
- (2) Small-scale removal of any fouling is enabled but, unless the fouling is from within the Auckland region, capture is required due to the fact that the fouling has not been assessed as negligible or low biological risk and the relative ease of capturing small amounts of fouling (Standard 3).
- (3) Fouling of international origin or domestic (NZ) origin that has not been assessed and confirmed as low-risk species are considered highest risk and are therefore subject to the most stringent standards, including capture of all bio-fouling debris (Standard 3).
- (4) Methods that render the organisms non-viable are subject to a less stringent standard for capture (Standard 6) as the organisms cannot spread after removal; however, chemical treatments may be subject to other controls within this plan (e.g. discharges).

...

F2.21.9. Standards – Use and activities and associated occupation

Activities listed as permitted or restricted discretionary in Table F2.19.8 must comply with the standards in F2.21.1 and the standards in F2.21.9.

F2.21.9.1. Public access, passive recreation, navigation and general use Use of the coastal marine area not otherwise provided for in the Plan and that does not involve occupation of the common marine and coastal area

- (1) Any visible disturbance to the substrate of the coastal marine area must be remedied or restored within 48 hours of the completion of the works in areas identified in D11 Outstanding Natural Character Overlay, D10 Outstanding Natural Features Overlay and D9 Significant Ecological Area Overlay – Marine 1 and within seven days in other areas of the coastal marine area.

- (2) The activity or use must not require ~~exclusive~~ occupation of the common marine and coastal area.
- (3) The activity or use must not require exclusion of public use and access to an area.

...

F2.21.10. Standards – Structures

Activities listed as permitted or restricted discretionary in Table F2.19.10 must comply with the standards in F2.21.1 and the standards in F2.21.10.

F2.21.10.1. Maintenance, repair and reconstruction of existing lawful coastal marine area structures or buildings

Purpose: ensure works are undertaken to an acceptable standard.

- (1) The work must maintain the structure or building in a good and safe working condition.
- (2) The work must not ~~use materials which~~ alter the form or external appearance of the structure in more than a minor way.
- (3) The work must not ~~change~~ increase the existing footprint area occupied by the structure ~~except that with respect to network utilities in the Coastal – General Coastal Marine Zone (outside of the overlays other than the National Grid Corridor Overlay), the area of occupation is within 2m of the existing alignment or location.~~

...

F2.21.10.7. Minor infrastructure upgrades upgrading of network utilities

Purpose: ensure infrastructure upgrading work meets required standards.

- (1) Upgrading works must meet the relevant standards in E26 Infrastructure in E26.2.5.3(1).
- (2) In the: D9 Significant Ecological Areas Overlay – Marine 1 and 2; D17 Historic Heritage Overlay; D21 Sites and Places of Significance to Mana Whenua Overlay; D11 Outstanding Natural Character and High Natural Character overlays; and D10 Outstanding Natural Features Overlay; and Outstanding Natural Landscapes Overlay; ~~the work must not change the area occupied by the structure~~ minor infrastructure upgrading must not increase the size or alter the existing location of the existing footprint and must otherwise be in accordance with the permitted activity standards for minor infrastructure upgrading in E26.2.5.3(1).
- (3) Any upgrading of infrastructure that does not comply with the standards for minor infrastructure upgrading specified above, shall be subject to the relevant activity

status for that activity specified in Activity Table F2.19.10, not the activity tables in E26 Infrastructure.

F2.21.10.8. Occupation of the common marine and coastal area by infrastructure structures

- (1) Occupation of the common marine and coastal area by infrastructure structures, that form part of a network operated or managed by a network utility operator, and are existing at 23 October 2001, and any subsequent upgrade to such a structure, must meet all of the following:
 - (a) the structure must be located so that it does not cause more than minor erosion, depositing, or disturbance;
 - (b) the structure must be not redundant, in that it is being used and is physically capable of being used for its required purpose;
 - (c) the structure and/or its location must be shown on a plan with the NZMS grid references (seven digit easting and northing), and by a photograph, both of which are provided to the Council; and
 - (d) any upgrade must comply with the standards for minor infrastructure upgrading of network utilities in E26 Infrastructure at E26.2.5.3(1) ~~the network utilities and energy rules.~~

...

F2.23. Assessment – restricted discretionary activities

F2.23.1. Matters of discretion

The Council will restrict its discretion to all of the following matters when assessing a restricted discretionary resource consent application:

- (1) all restricted discretionary activities:
 - (a) the effects of construction or works methods, and the timing and hours of operation;
 - (b) the effects of the location, extent, design and materials;
 - (c) effects on coastal processes, ecological values, water quality and natural character and landscape values;
 - (d) effects on public access, navigation and safety;
 - (e) effects on existing uses and activities (including ~~significant~~ infrastructure);...

...

(3) specific matters for identified activities: ...

(d) re-consenting lawfully established aquaculture activities:

(i) effects on ...

F2.23.2. Assessment criteria

...

(17) structures and buildings in the coastal marine area:

...

(g) the extent to which the reconstruction, alteration or extension of existing structures:

(i) do not have significant adverse effects on other uses and values;

(ii) result in greater, more efficient, or multiple use of the structure for marine activities; ~~and~~

(iii) reduce the need for a new structure elsewhere;

(iv) provide for activities that cannot practicably be located on land outside of the common marine and coastal area;

(v) will enhance amenity values and not conflict with marine activities; and

(vi) any necessary land-based infrastructure can be provided.

...

(19) re-consenting lawfully established aquaculture activities

...

F3. Coastal – Marina Zone

...

Table F3.4.3 Activity table

Note 1. Rule F3.4.3(A34) does not apply if an activity is in accordance with an agreement with the party who holds the existing occupation consent.

	Activity	Activity status	
		Coastal marine area [rcp]	Land [dp]
...			

(A31)	New and existing pile moorings including occupation and use by the vessel to be moored	P	NA
(A32)	Maimai	NC	NC
<u>(A33)</u>	<u>Exclusive occupation of the common marine and coastal area by a structure or activity that would otherwise be permitted</u>	<u>RD</u>	<u>NA</u>
<u>(A34)</u>	<u>Occupation of the common marine and coastal area by an activity that would otherwise be permitted where the area to be occupied is already the subject of an existing occupation consent</u>	<u>RD</u>	<u>NA</u>

...

F3.8. Assessment – restricted discretionary activities

F3.8.1. Matters of discretion

The Council will reserve its discretion to all of the following matters when assessing a restricted discretionary resource consent application:

(1) for all restricted discretionary activities:

...

(5) for structures or buildings in the coastal marine area and buildings on land:

(a) effects on views to and from the surrounding area, and the visual amenity effects from the presence of the structure.

(6) for occupation of the common marine and coastal area:

(a) the effects of the location, extent, timing and duration of the occupation, including exclusive occupation.

F3.8.2. Assessment criteria

The Council will consider the relevant assessment criteria below for restricted discretionary activities:

...

(6) for occupation of the common marine and coastal area:

(a) refer to assessment criteria set out for occupation in the Coastal – General Coastal Marine Zone.

F5. Coastal – Minor Port Zone

...

Table F5.4.3 Activity table

Note 1. Rule F5.4.3(A43) does not apply if an activity is in accordance with an agreement with the party who holds the existing occupation consent.

	Activity	Activity status	
		Coastal marine area [rcp]	Land [dp]
...			
(A40)	Maimai	NC	NC
(A41)	Structures or buildings not otherwise provided for	D	D
(A42)	<u>Exclusive occupation of the common marine and coastal area by a structure or activity that would otherwise be permitted</u>	RD	NA
(A43)	<u>Occupation of the common marine and coastal area by an activity that would otherwise be permitted where the area to be occupied is already the subject of an existing occupation consent</u>	RD	NA

...

F5.8. Assessment – restricted discretionary activities

F5.8.1. Matters of discretion

The Council will restrict its discretion to all of the following matters and the relevant matters in the Coastal – General Coastal Marine Zone when assessing a restricted discretionary resource consent application.

...

(9) for the occupation of the common marine and coastal area:

(a) effects on the safe and efficient use, operation and development of the Port of Onehunga.

F5.8.2. Assessment criteria

The Council will consider the relevant assessment criteria for restricted discretionary activities from the list below and the relevant assessment criteria in the Coastal – General Coastal Marine Zone:

...

(9) for occupation of the ~~coastal~~ common marine and coastal area:

(a) refer to assessment criteria set out for occupation in the Coastal – General Coastal Marine Zone.

Chapter F6. Coastal – Ferry Terminal Zone

...

Table F6.4.3 Activity table

Note 1. Rule F6.4.3(A24) does not apply if an activity is in accordance with an agreement with the party who holds the existing occupation consent.

	Activity	Activity status	
		Coastal marine area [rcp]	Land [dp]
...			
(A21)	New pile moorings established after 30 September 2013 including occupation and use by the vessel to be moored	NC	NC
(A22)	Maimai	D	D
<u>(A23)</u>	<u>Exclusive occupation of the common marine and coastal area by a structure or activity that would otherwise be permitted</u>	<u>RD</u>	<u>NA</u>
<u>(A24)</u>	<u>Occupation of the common marine and coastal area by an activity that would otherwise be permitted where the area to be occupied is already the subject of an existing occupation consent</u>	<u>RD</u>	<u>NA</u>

...

F6.8. Assessment – restricted discretionary activities

F6.8.1. Matters of discretion

The Council will restrict its discretion to all the following matters and the matters in the Coastal – General Coastal Marine Zone when assessing a restricted discretionary resource consent application.

...

F6.8.2. Assessment criteria

The Council will consider the relevant assessment criteria the Coastal – General Coastal Marine Zone in addition to the matters below.

...

F7. Coastal – Defence Zone

...

Table F7.4.4 Activity table

Note 1. Rule F7.4.4(A23) does not apply if an activity is in accordance with an agreement with the party who holds the existing occupation consent.

	Activity	Activity status
...		
(A20)	New pile moorings established after 30 September 2013 including occupation and use by vessel to be moored	RD
(A21)	Pile moorings existing at 30 September 2013 including occupation and use by the vessel to be moored	P
(A22)	<u>Exclusive occupation of the common marine and coastal area by a structure or activity that would otherwise be permitted</u>	<u>RD</u>
(A23)	<u>Occupation of the common marine and coastal area by an activity that would otherwise be permitted where the area to be occupied is already the subject of an existing occupation consent</u>	<u>RD</u>

...

F7.8. Assessment – restricted discretionary activities

F7.8.1. Matters of discretion

The Council will restrict its discretion to all of the following matters when assessing a restricted discretionary resource consent application.

(1) for all restricted discretionary activities:

...

(2) for occupation of the common marine and coastal area:

(a) the effects of the location, extent, timing and duration of the occupation, including exclusive occupation.

F7.8.2. Assessment criteria

The Council will consider the following assessment criteria in when assessing a restricted discretionary resource consent application.

(1) All restricted discretionary activities.

...

(2) for occupation of the common marine and coastal area:

(a) refer to assessment criteria set out for occupation in the Coastal – General Coastal Marine Zone.

Chapter J. Definitions

...

Experimental aquaculture activities

Aquaculture activities that are limited to a maximum of 1ha, 10 years in duration and test new species, including polyculture, and or new technology or techniques.

...

Lawfully established aquaculture activities

Aquaculture activities consented and operational at 30 September 2013.

...

New aquaculture

Aquaculture activities not consented and operational at 30 September 2013.

...

Consequential changes to other parts of the plan

E26 Infrastructure

[Annotate the standard for minor infrastructure upgrading as [dp/rcp] as follows:]

E26.2.5.3. Specific activities within zones in Table E26.2.3.1

The specific activities listed below are required to comply with the permitted activity standards in E26.2.5.1 and E26.2.5.2. Where a standard in E26.2.5.3 for a specified activity varies from a standard in E26.2.5.1 or E26.2.5.2, E26.2.5.3 shall apply.

Minor infrastructure upgrading [rcp/dp]

- (1) Minor infrastructure upgrading of network utilities must comply with the following controls (where relevant):
 - (a) minor re-alignment, configuration, relocation or replacement of electricity, gas distribution, or telecommunication line, pipe, pole, conductors, cross arms, switches, transformers, cabinets or ancillary structures:
 - (i) that is within 2m of the existing alignment or location;
 - (ii) that is within 5m of the existing alignment or location when associated with road widening reasons or road safety or electricity clearance reasons. ...

Chapter M Appendices

Appendix 7 Coastal marine area boundaries

All provisions in this appendix are regional coastal plan [rcp].

The coastal marine area boundary at rivers is shown on the maps by the information layer “coastal marine area/river boundary point”.

Under the RMA, the coastal marine area boundary across rivers is referenced to the mouth of the river – the lesser of one kilometre upstream of the mouth of the river or the point upstream calculated by multiplying the width of the river by five. Only the coastal marine area boundary at rivers (not the river mouth) is shown on the maps. The mouth of the river can be determined by back-calculating from the coastal marine area boundary across a river.

For each river identified in the table below, the “coastal marine area boundary” is a straight line drawn from bank to bank through, or as close as possible to, the reference point relating to that river at right angles to the river flow at that point. Where the landward boundary of the coastal marine area is noted below as aligning with a physical structure in the river (for example, a bridge) the landward boundary is the seaward side of the structure, and the structure is not in the coastal marine area.

For rivers not identified in the table below, the “mouth” shall be at that point depicted by a straight line representing a continuation of the line of mean high water springs on each side of the river.

[Delete the six existing tables (Table 1 Kaipara Harbour to Table 6 Great Barrier Island)]

Table 1: Kaipara Harbour

ID	River	River Mouth NZMS260 map grid reference	Coastal Marine Area Boundary NZMS260 map grid reference
1	Maeneene Creek	Q09 451 500	Seaward side of main trunk railway bridge Q09 452 501
2	Te Hana Creek	Q09 460 489	Q09 460 488
3	Whakapirau Creek, main stem	Q09 442 466	Seaward side Te Hana – Port Albert Rd bridge Q09 448 465
4	Whakapirau Creek, Western	Q09 437 462	Seaward side of Wellsford Valley Road

	Arm		bridge Q09 435 461
--	-----	--	-----------------------

[... All the tables ...]

Table 6: Great Barrier Island

ID	River	River Mouth NZMS260 map grid reference	Coastal Marine Area Boundary NZMS260 map grid reference
248	Oruawhare Stream	T09 357 447	T09 357 445
249	Kaitoke River	T09 318 492	Seaward side Kaitoke Awana Roadbridge T09 318 493
250	Awana Stream	T08 336 525	T08 336 525
251	Motairehe Stream	S08 244 620	S08 244 620
252	Whangaparapara Stream	S09 260 487	S09 260 487

Note 1

For each river identified in the above schedules the “mouth” is a straight line drawn from bank to bank through or as close as possible to the grid reference relating to that river at right angles to the river flow at that grid reference.

Note 2

For rivers not identified in the above schedules the “mouth” shall be at that point depicted by a straight line representing a continuation of the mean high water springs on each side of the river.

[Insert the following table:]

		Coastal Marine Area/River Boundary		
Id	River	Location	NZTM Point X	NZTM Point Y
KAIPARA HARBOUR				
1	Maeneene Creek	Seaward side of main trunk railway bridge	1734611.05	5988322.42
2	Te Hana Creek	Seaward side of State Highway 1	1735563.76	5986967.50
3	Whakapirau Creek Main Stem	Seaward side of Te Hana - Port Albert Road Bridge	1734258.15	5984761.21
4	Whakapirau Creek Western Arm	Seaward side of Wellsford Valley Road Bridge	1732676.92	5984238.34
5	Kaiwakawaka River	Northern boundary of Lot 2 DP 82152	1729452.15	5983370.07
6	Waireia River		1728576.47	5982088.41
7	Wharehanu Creek	Seaward side of Beaver Road Bridge	1727598.10	5982274.05
8	Takapau Creek		1725093.74	5979772.24
9	Takahe Creek	Seaward side of reclamation	1724197.01	5979240.97
10	Atiu Creek		1722908.90	5979311.84
11	Mullet Creek East Arm		1720809.89	5978468.54
12	Mullet Creek West Arm		1719523.23	5978464.73
13	Oturapa Creek		1718428.27	5978467.31
14	Otekawa Creek	Seaward side of Journeys End Bridge	1714860.54	5979304.39
15	Gum Store Creek West Arm		1716983.48	5976090.91
16	Gum Store Creek East Arm		1717296.07	5975630.02
17	Te Raupa Creek	Seaward side of Kakaraea Road	1722795.70	5971350.56
18	Hiki Creek	Seaward side of Burma Road Bridge	1722864.60	5972970.64
19	Kahutaewao Creek		1724247.31	5973567.17
20	Whanaki Creek Northern Arm	Seaward side of Wharahine Road	1728154.23	5976765.13
21	Whanaki Creek Southern Arm	Seaward side of Wharahine Road	1728345.03	5976188.21
22	Te Pahi Stream		1729907.92	5973166.52
23	Hoteo River	South boundary Pt Lot 1 DP 64445	1729691.45	5967580.01
24	Omaumau River		1728214.97	5965287.28
25	Mataia Creek		1729258.00	5960581.00
26	Araparera Creek		1729701.02	5959197.07
27	Makarau River	Seaward side of Kaipara Coast Highway Bridge	1731149.94	5954273.15
28	Waitangi Stream	Seaward side of Kaipara Coast Highway Bridge	1731731.85	5953390.46
29	Wheraroa Creek	Seaward side of Jordan Road Bridge	1731017.46	5951742.78
30	Matawhero Stream	Eastern boundary of Lot 5 DP 317983	1729647.31	5949003.28
31	Kaipara River	Seaward side of confluence of Kaipara River and Kaukapakapa River	1728994.71	5943513.36
32	Upokonui Creek	Seaward side of South Head Road	1726184.89	5942959.82
33	Te Hihi Creek	Seaward side of South Head Road	1724288.78	5944132.45
34	Takapau Horahia Creek	Seaward side of South Head Road	1724120.81	5944270.64

		Coastal Marine Area/River Boundary		
Id	River	Location	NZTM Point X	NZTM Point Y
35	Kaituna Creek	Seaward side of Old South Head Road	1721839.24	5945096.72
36	Hihī Stream	Seaward side of South Head Road	1721205.52	5945881.59
37	Okaro Creek	Seaward side of South Head Road	1720926.35	5945878.02
38	Slater Road Creek	Seaward side of South Head Road	1720125.50	5946769.05
39	Tikitu Creek		1719726.52	5947968.26
40	Kaikioire Creek		1718984.62	5949569.67
41	Mairetahi Creek		1718779.73	5952286.76
42	Taumata Creek East Arm	Seaward side of South Head Road	1715920.16	5955535.08
43	Taumata Creek West Arm	Seaward side of South Head Road	1715853.28	5956249.10
44	Haratahi Creek		1713845.30	5960037.26
MANUKAU HARBOUR				
45	Huia Stream	Seaward side of Huia Road Bridge	1739404.66	5904157.74
46	Kakamatua Stream		1741735.58	5903871.90
47	Big Muddy Creek		1743851.23	5908001.02
48	Waiohua Creek		1745813.95	5908813.62
49	Little Muddy Creek		1746585.84	5909416.92
50	Paturoa Stream		1747756.14	5909274.90
51	Ann's Creek		1762928.06	5911492.97
52	Harania Creek South West Arm		1761234.80	5908871.58
53	Tararata creek	Seaward side of Walmsley Road offramp	1759792.75	5909025.55
54	Tautauroa Creek		1759466.96	5905034.60
55	Pukaki Creek		1760330.15	5905676.58
56	Waokauri Creek Northern Arm		1761959.40	5905885.48
57	Waokauri Creek Eastern Arm		1763174.93	5904810.61
58	Puhinui Creek		1763801.19	5901487.91
59	Puhinui Creek Eastern Arm		1765167.31	5901676.89
60	Waimahia Creek	Seaward side of Mahia Road	1766624.14	5899335.08
61	Papakura Stream		1769044.99	5898395.45
62	Hingaia Stream and Slippery Creek	Seaward side of State Highway 1	1772745.28	5892790.16
63	Ngakoroa Stream	Seaward side of Bremner Road Bridge	1772730.32	5891848.10
64	Oira Stream	Adjacent to southern boundary of Lot 4 DP 107835	1770407.55	5890848.03
65	Whangapouri Creek		1768358.23	5890712.20
66	Whangamaire Stream		1766777.23	5894621.23
67	Whangamaire Stream		1765957.46	5893375.38
68	Whangamaire Stream		1765908.10	5892077.32
69	Whangamaire Stream	Seaward side of Muir Road Bridge	1766191.27	5890611.46
70	Whangamaire Stream		1765348.26	5892464.26

Coastal Marine Area/River Boundary				
Id	River	Location	NZTM Point X	NZTM Point Y
71	Whangamaire Stream		1765508.51	5893697.77
72	Whangamaire Stream		1765942.80	5894587.64
73	Pahurehure Inlet		1766339.34	5895453.52
74	Pahurehure Inlet		1765557.52	5895906.14
75	Pahurehure Inlet		1764998.86	5896417.47
76	Clarks Creek Eastern Bank		1759263.32	5890658.92
77	Tuhitahi Creek	Seaward side of Kingseat Road Bridge	1759246.78	5888389.49
78	Karaka Creek	Seaward side of McKenzie Road Bridge	1758291.40	5888569.36
79	Clarks Creek Western bank		1758119.52	5890666.10
80	Clarks Creek Western bank		1758064.41	5891952.75
81	Clarks Creek Western bank		1757922.65	5892068.82
82	Clarks Beach Inlet Stream		1755663.45	5890484.74
83	Taihiki River Northern Bank		1752660.97	5887331.61
84	Taihiki River Northern Bank		1753400.92	5887326.02
85	Taihiki River Northern Bank		1754667.58	5887410.85
86	Taihiki River Northern Bank		1754927.68	5887097.79
87	Taihiki River Northern Bank		1755557.32	5886136.03
88	Taihiki River Northern Bank		1756010.04	5886141.10
89	Taihiki River Northern Bank		1756020.94	5885928.55
90	Mauku Stream	Seaward side of Glenbrook Road Bridge	1759323.02	5884278.38
91	Taihiki River Southern Bank		1757632.41	5884493.56
92	Taihiki River Southern Bank		1757011.85	5884626.05
93	Taihiki River Southern Bank		1755716.83	5884279.18
94	Taihiki River Southern Bank		1755302.32	5883176.55
95	Taihiki River Southern Bank		1755242.74	5883051.35
96	Taihiki River Southern Bank		1755070.53	5882884.92
97	Taihiki River Southern Bank		1755101.12	5883378.03
98	Waiuku River Eastern Bank		1753185.33	5882785.07
99	Stream east side of Racecourse Road		1754613.96	5877085.70
100	Waiuku Stream	Northern side of King Street	1753487.23	5876225.17
101	Rangiwhera Creek		1752429.49	5876775.22
102	Awaruaiti Creek		1751404.00	5877509.80
103	Awaruaiti Creek		1751275.50	5877924.87
104	Awaruaiti Creek		1751310.87	5878050.87
105	McGowan Road Creek		1751299.99	5878687.90
106	Mokorau Creek		1751064.57	5879315.90
107	Parakau Creek		1750355.30	5879923.84

		Coastal Marine Area/River Boundary		
Id	River	Location	NZTM Point X	NZTM Point Y
108	Totara Creek		1750874.54	5880958.47
109	Waipipi Creek		1749666.54	5881168.88
110	Waipipi Creek		1749746.17	5881471.05
111	Te Hakono Creek		1749710.33	5882762.49
112	Te Hakono Creek		1749417.93	5882916.23
113	Pukewhau Creek		1749430.19	5884383.83
114	Kohonui Creek		1749413.25	5885237.77
115	Ohiku Creek		1748056.71	5885756.21
116	Ohiku Creek		1748812.35	5886735.14
117	Rangiriri Creek		1746952.71	5887872.05
118	Rangiriri Creek		1747134.53	5888572.46
119	Rangiriri Creek		1746895.01	5888910.37
120	Matakawau Creek		1746830.84	5890111.22
121	Matakawau Creek		1745837.75	5890404.12
122	Kauritutahi Stream		1745325.71	5894245.04
123	Stream north of Kauritutahi Stream		1745838.24	5895250.28
WAITEMATA HARBOUR AND HAURAKI GULF				
124	Unnamed Stream	Seaward side of Couldry's Bridge	1793708.86	5909341.82
125	Rautawa Stream	Seaward side of Kawakawa Bay Coast Road	1793334.05	5908767.72
126	Kawakawa Bay Stream	Seaward side of Clevedon-Kawakawa Bay Road Bridge	1792210.13	5908379.82
127	Rotopiro Stream		1788530.89	5908652.88
128	Urangahau Stream	Seaward side of Vennon's Bridge	1785180.13	5907744.52
129	Wairoa River		1784148.22	5907650.38
130	Te Puru Creek Eastern Arm	Seaward side of Whitford Maraetai Road Bridge	1780223.19	5916128.99
131	Te Puru Creek	Seaward side of Whitford Maraetai Road Bridge	1780020.11	5916103.56
132	Grangers Stream	Seaward side of Whitford Maraetai Road Bridge	1775670.32	5909903.09
133	Turanga Creek		1775432.63	5908914.07
134	Maungamaungaroa Creek	Seaward side of Whitford Road Bridge	1772372.29	5911760.84
135	Pakuranga Creek Pakuranga Road Arm		1768679.55	5913188.09
136	Pakuranga Creek Cascades Road Arm	Seaward side of Cascades Road Bridge	1769685.39	5912948.81
137	Pakuranga Creek Golf Course		1769524.34	5912474.00
138	Pakuranga Creek Power Sub Station Arm	Seaward side of footbridge	1769647.13	5911813.36

Coastal Marine Area/River Boundary				
Id	River	Location	NZTM Point X	NZTM Point Y
139	Pakuranga Creek Cryers Road Arm		1768478.43	5911285.75
140	Otara Creek Kerwyn Road Arm		1767536.01	5909726.82
141	Otara Creek Opposite Andromeda Crescent		1767805.18	5909091.55
142	Otara Creek East Tamaki Road Arm	Seaward side of footbridge	1767500.28	5908752.62
143	Tamaki River Bairds Road Arm		1765310.43	5908234.75
144	Tamaki River Middlemore Hospital		1764242.00	5907445.58
145	Tamaki River		1764316.90	5908319.61
146	Otahuhu Creek Adjacent to Meadow Street		1764253.26	5910620.67
147	Unnamed Stream Adjacent to Bowden Road		1764909.44	5912833.78
148	Unnamed Stream Upstream of Donnor Place		1764796.17	5913211.25
149	Omaru Creek		1766745.66	5917014.35
150	Purewa Creek		1763321.90	5918507.35
151	Orakei Basin Stream		1762429.65	5917766.11
152	Orakei Basin Stream		1762021.04	5917542.70
153	Orakei Road Stream	Seaward side of Shore Road Bridge	1760873.25	5918485.19
154	Portland Road Stream	Seaward side of Shore Road Bridge	1760099.71	5918677.40
155	Newmarket Stream	Seaward side of Brighton Road	1759391.60	5918748.10
156	Coxs Creek		1753794.06	5920315.36
157	Motions Creek	Seaward side of Meola Road	1753072.07	5919538.28
158	Meola Creek	Seaward side of Meola Road	1752571.07	5919221.08
159	Oakley Creek	Seaward side of Great North Road	1751960.23	5917779.09
160	Whau River	Seaward side of railway bridge	1750782.43	5914036.26
161	Rewarewa Creek		1749733.55	5914545.32
162	Taroa Stream		1749513.35	5914264.25
163	Wairau Creek		1747730.34	5915244.27
164	Glendene Stream		1747397.75	5916685.40
165	Henderson Creek		1745715.71	5918184.05
166	Paremuka Stream	Northern end of Woodside Road	1744125.44	5919875.05
167	Huruhuru/Swanson Stream	Seaward side of footbridge	1744066.93	5919963.41
168	Rarawaru Creek		1744940.17	5921649.07
169	Taikata Creek (Kopupapa Stream)		1745996.97	5922628.41
170	Lawson's Creek		1745413.84	5923384.24
171	Waipareira Stream		1746492.88	5924758.98
172	Romeo Stream		1746536.94	5924785.45

		Coastal Marine Area/River Boundary		
Id	River	Location	NZTM Point X	NZTM Point Y
173	Waiorahia Stream		1746077.94	5926388.04
174	Rarawaru Creek		1744433.56	5928078.66
175	Totara Creek	Seaward side of Brigham Creek Road	1742953.36	5926686.17
176	Brigham Creek	Seaward side of State Highway 16	1741976.51	5926903.72
177	Rangitopuni Creek	Seaward side of Coatesville-Riverhead Highway Bridge	1742529.56	5931228.08
178	Paremoremo Creek		1746231.10	5931387.36
179	Lucas Creek	Waterfall upstream of Dairy Flat Highway	1751178.70	5934498.21
180	Oteha Stream	Seaward side of Albany Highway	1751331.20	5933565.42
181	Te Wharau Creek Northern Arm		1750317.22	5930110.94
182	Te Wharau Creek Southern Arm		1750053.95	5929671.74
183	Kingfisher Grove Creek		1748747.04	5929180.44
184	Hellyers Creek		1751961.05	5929121.54
185	Kaipatiki Creek		1752426.05	5927689.73
186	Kaipatiki Creek Eskdale Road Arm		1752192.03	5927105.37
187	Kaipatiki Creek Beach Haven Road Arm	Seaward side of Beach Haven Road	1751425.10	5927246.92
188	Soldiers Bay Stream		1751635.62	5924518.54
189	Little Shoal Bay Stream	Seaward side of Maritime Terrace	1755168.46	5924118.40
190	Onepoto Stream	Seaward side of Lake Road	1755587.67	5925143.42
191	Hillcrest Creek	Seaward side of Esmonde Road	1757398.78	5926107.67
192	Wairoko Creek	Seaward side of footbridge	1758871.75	5925540.75
HAURAKI GULF COASTLINE				
193	Wairau Creek	Immediately downstream of Wairau Creek outfall	1757347.06	5928967.62
194	Deep Creek	Seaward side of Beach Road Bridge	1756461.70	5936802.06
195	Awaruku Creek	Seaward side of road bridge	1756439.48	5938133.50
196	Long Bay North Stream	Seaward side of bridge	1756019.47	5939152.44
197	Okura Beach Road Stream		1754152.56	5939418.47
198	Okura River		1752664.65	5938895.22
199	Okura River		1752372.20	5939057.36
200	Okura River		1751938.10	5939074.75
201	Okura River North Branch		1752248.97	5940540.10
202	Doctors Creek	Opposite northern boundary Lot 4 DP 26549	1753132.87	5944124.61
203	Duck Creek	Seaward side of Duck Creek Road Bridge	1751670.58	5944469.17
204	Newman Road Stream		1750743.03	5945442.54

		Coastal Marine Area/River Boundary		
Id	River	Location	NZTM Point X	NZTM Point Y
205	Weiti River	Seaward side of Tavern Road	1749990.77	5946011.27
206	Orewa River	Seaward side of Northern Motorway	1748716.27	5948381.21
207	Orewa River North Branch		1749523.57	5949120.73
208	Nukumea Stream	Seaward side of Hibiscus Coast Highway	1751262.71	5950976.06
209	Otanerua Stream South Arm		1751554.87	5952137.41
210	Otanerua Stream North Arm		1751783.89	5952689.76
211	Waiwera River	Opposite western boundary Lot 8 DP 61445	1750613.33	5955025.79
212	Okahu Creek		1749649.16	5955910.19
213	Puhoi River		1750189.96	5957249.05
214	Te Muri-O-Tarariki Stream		1753070.90	5957984.00
215	Pukapuka River	Seaward side of Pukapuka Road Bridge	1750500.65	5960894.92
216	Dyers Creek Southern Arm		1751603.97	5962788.22
217	Dyers Creek Northern Arm		1751337.91	5963192.71
218	Cowan Bay Stream West Arm		1751718.05	5965261.22
219	Cowan Bay Stream East Arm		1752311.67	5965455.33
220	Hepburn Creek	Seaward side of Hepburn Creek Road Bridge	1751173.02	5966595.89
221	Johnson Creek	Seaward side of Hepburn Creek Road Bridge	1750735.88	5968357.73
222	Mahurangi River		1750429.46	5969976.78
223	Duck Creek		1751787.72	5968968.77
224	Dawson's Creek (Te Whau Creek)	Seaward side of causeway to Wastewater Treatment Plant	1754178.38	5968232.18
225	Goodalls Stream		1754984.20	5966693.07
226	Te Kapa River Northern Arm		1755823.29	5964470.31
227	Te Kapa River Eastern Arm		1757020.63	5963100.17
228	Glen Eden River		1753412.94	5973449.69
229	Matakana River	Northern boundary Pt Lot 1 DP 169734	1754258.87	5975297.08
230	Baddley's Beach Stream		1757332.53	5972551.43
231	Campbells Beach Western Stream		1758406.49	5972363.69
232	Campbells Beach Eastern Stream		1758685.81	5972300.98
233	Omaha River	Northern end esplanade reserve adjacent to Lot 2 DP 83584	1755954.48	5977169.26
234	Tamahunga Stream	Southern boundary of Lot 1 DP 8755	1756114.73	5977557.03
235	Birdsall Road Stream		1757606.20	5980133.90
236	Young Creek	Seaward side of Ashton (Sadler) Road Bridge	1757839.02	5980261.92

Coastal Marine Area/River Boundary				
Id	River	Location	NZTM Point X	NZTM Point Y
237	Coxhead Creek	Seaward side of Coxhead Creek Road Bridge	1759692.99	5980745.50
238	Kohuroa Stream	Seaward side of footbridge	1761405.56	5981202.57
239	Omaha Cove Western Arm	Seaward side of footbridge	1762059.11	5982560.65
240	Omaha Cove Northern Arm	Seaward side of footbridge	1762053.06	5982804.39
WAIHEKE ISLAND				
241	Okahuiti Creek		1782500.91	5926136.76
242	Taiwaipareira Creek	Seaward side of Ostend Road	1783205.55	5925739.63
243	Rangihoua Creek		1784527.45	5925021.03
244	Rangihoua Creek		1784462.15	5924915.44
245	Awaawaroa Bay Stream		1787571.55	5923582.34
246	Awaawaroa Bay Stream		1788088.42	5923453.42
247	Te Matuku Stream	Seaward side of Orapiu Road Bridge	1790772.07	5922462.56
GREAT BARRIER ISLAND				
248	Oruawharo Stream		1824993.48	5983118.35
249	Kaitoke River	Seaward side of Gray Road	1821663.88	5987612.64
250	Awana Stream		1822991.40	5990966.10
251	Motairehe Stream		1813938.52	6000465.15
252	Whangaparapara Stream		1815388.41	5987185.44

AUP GIS Viewer

Add a new map layer to show the updated coastal marine area boundary points at rivers.

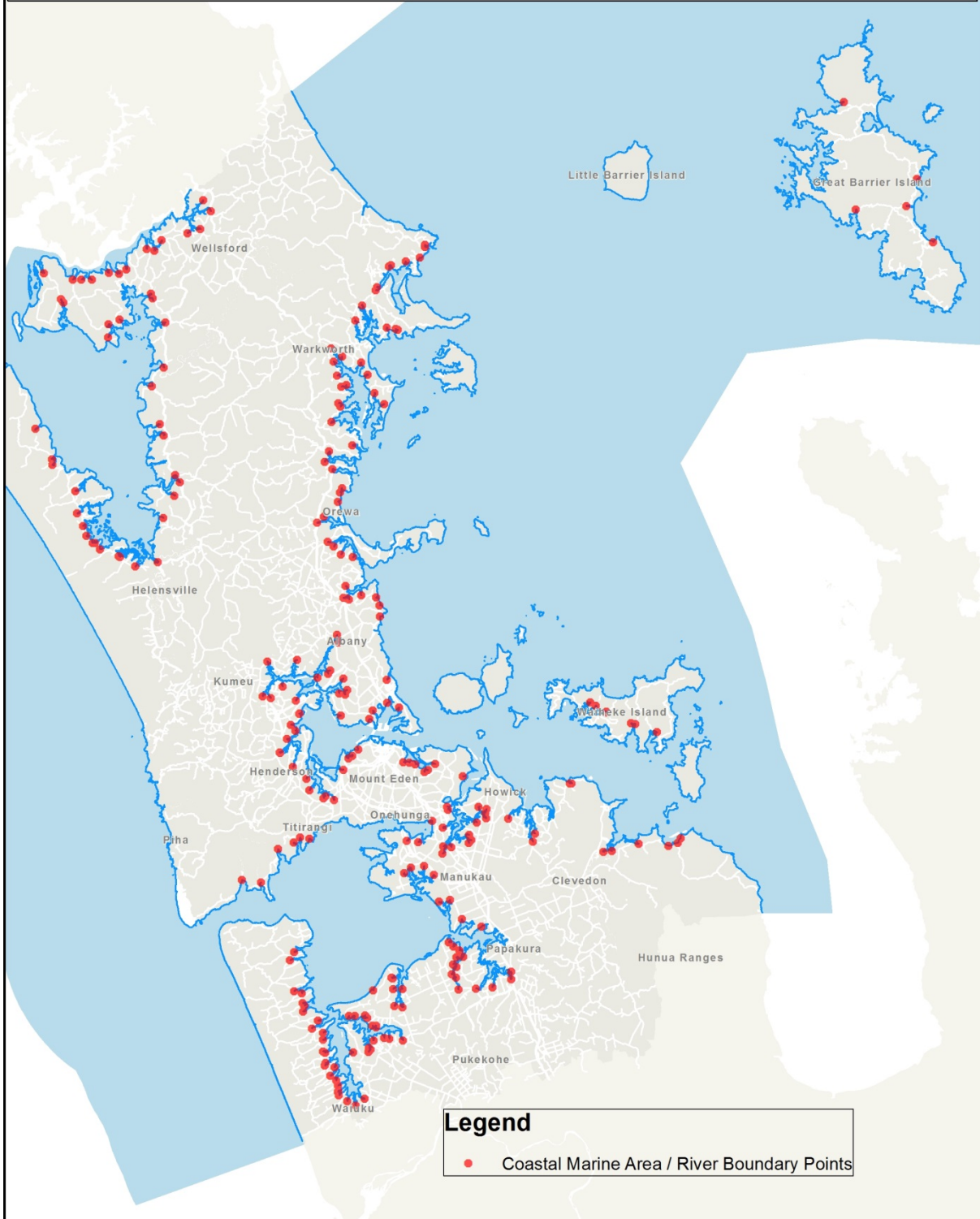
The points will be shown as dots where the indicative coastline crosses the relevant rivers.

The layer will be named “Coastal marine area/river boundary point”.

The layer will be added to the legend in the “Information” section.

The following two maps show an overview of location of all the points and an example of how the points will appear in the viewer.

**Map 1 Overview - Plan change 15, addition to the Auckland Plan GIS Viewer (information layer)
Coastal Marine Area / River Boundary Points**



**Map 2 Detail - Plan change 15, addition to the Auckland Plan GIS Viewer (information layer)
Coastal Marine Area / River Boundary Points**

