
	<p>The New Zealand Coastal Conference Development and Conservation of our Coasts and Lakesides</p>
	<h2>Waterfront Phenomenon</h2> <p>The Size & Nature of this Exclusive Market</p>
	



NEW ZEALAND WATERFRONT
 PART OF EVERY GENERATION







Foreign Exchange Calculator

Calculation Instructions Bookma

Step 1 - Select Currency Medium *(you can see more)*

Notes Travellers Cheque / Draft Transfer*

Step 2 - Convert from Currency

British Pounds

Step 3 - Enter Amount

\$1,000,000

Step 4 - Select to Currency

New Zealand Dollars

Foreign Exchange Calculator

Calculation Results Bookmark this page >>

Below are the results of your calculation.

Convert from:

1,000,000.00 British Pounds is equivalent to:

Convert to:

2,697,599.14 New Zealand Dollars for Notes
(at a rate of 0.3707)

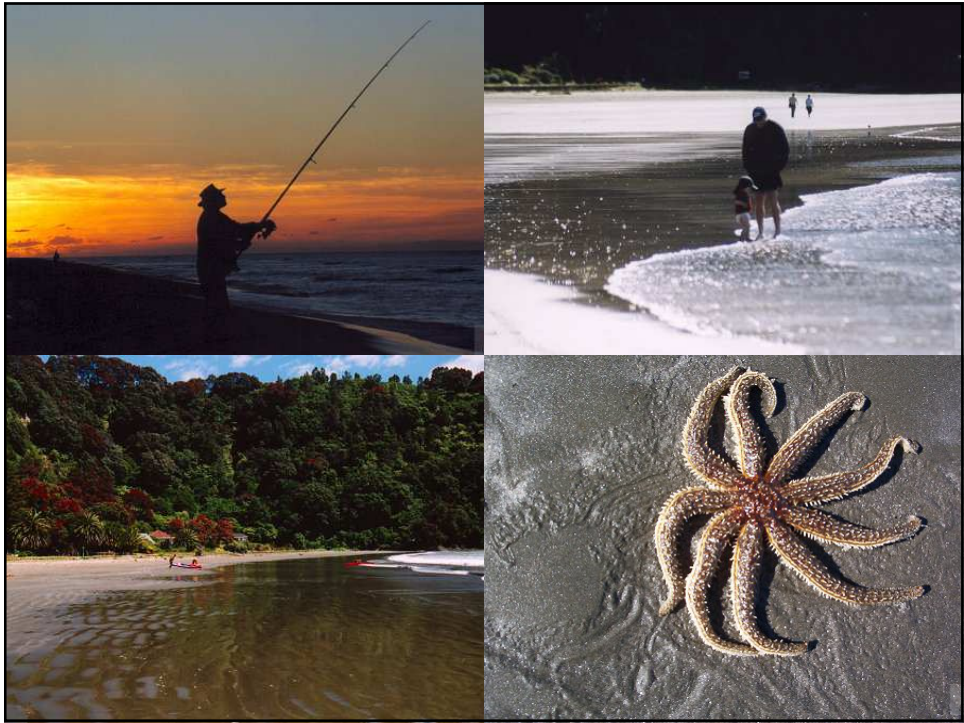
2,779,321.85 New Zealand Dollars for Travellers Cheques / Drafts
(at a rate of 0.3598)

Please refer to the disclaimer below for Telegraphic Transfers.

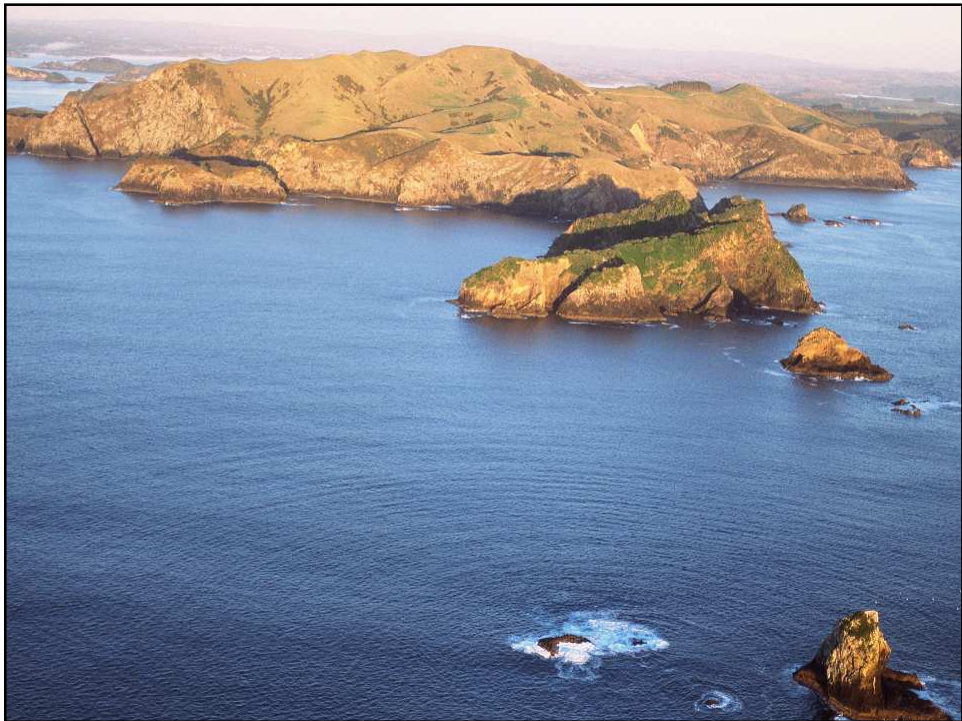
Travellers Cheques subject to availability.

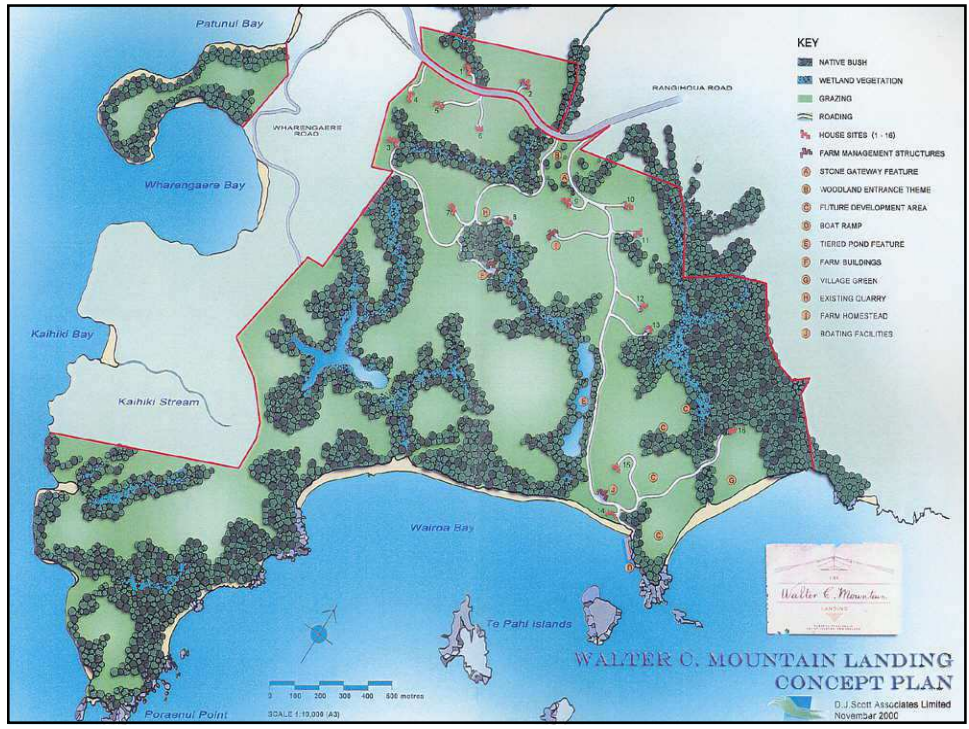
Currency conversions based on rates updated at 11:16 AM, Wednesday 04 August 2004











WATERFRONT

STUNNING WATERFRONT PROPERTIES

A selection of the finest waterfront properties
from New Zealand and the South Pacific



JOHN GREENWOOD

Waterfront / Special Projects

Mob +64 27 497 0077

Bus +64 9 309 6020

Bayleys Real Estate Ltd MREINZ

A member of the Bayleys Realty Group

