

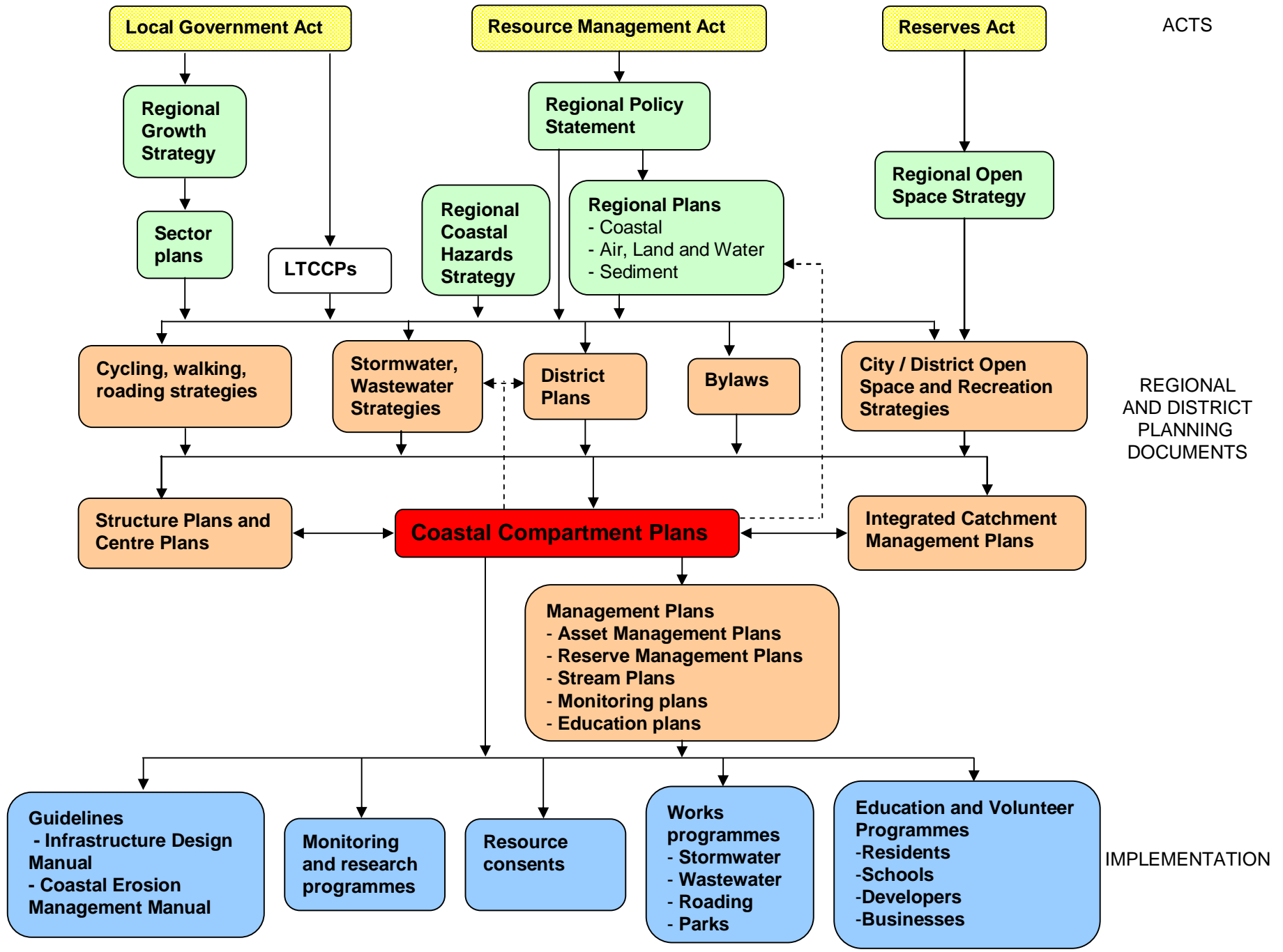


# Integrated Planning for the Coastal Environment but...

A stocktake of where we are at and possible ways forward

Alan Moore  
Auckland Regional Council





ACTS

REGIONAL AND DISTRICT PLANNING DOCUMENTS

IMPLEMENTATION

# Statutory Options

- **Legislation** – Local Government Act, Resource Management Act, Hauraki Gulf Marine Park Act
- **New Zealand Coastal Policy Statement**, Section 7 and 8 of the Hauraki Gulf Marine Park Act
- **Regional Policy Statement** – Auckland Regional Growth Strategy, Open Space Strategy
- **Regional Plans** – Auckland Regional Plan: Coastal (Coastal Environment Plan), Proposed Auckland Regional Plan: Air, Land and Water
- **Resource Consents** – Specific and detailed but reactive



# Non Statutory Options

- **Issue Specific Plan** – Integrated catchment management plans for stormwater management
- **Area Specific Plan**
  - Reactive – Manukau Harbour Action Plan, Tamaki Estuary Steering Group, Mahurangi Harbour Action Plan
  - Area Specific Proactive – Okura Estuary Study, Turanga Mangamangaroa Estuary Study, Upper Waitemata Harbour Study
- **Coastal Compartment Plans** – Maraetai to Umupuia, Pahurehure Inlet, Wharekawa to Kaiaua, Waiuku Estuary

# Non Statutory Options ctd



- **Community Lead Programmes-** Beachcare, Landcare, Waicare, shellfish monitoring, mangrove monitoring



# Basket of Option



- In terms of options, the basket is full
- Can we do it? YES but....
- What do we want to achieve? – scope - geographic scale, issues
- How do we make it work?



# Buts to Integration

- RMA promotes integrated management, but...
- Administrative boundaries, council functions, financial considerations, work priorities create physical and conceptual barriers, and separation
- Integrated plans may overcome these but highly dependent on relationships



# Way Forward

- Relationships
  - At all levels:
    - Organisation (financial, annual plans, resources)
    - Political (commitment)
    - Officer (commitment and implementation)
- Relationships
  - Strong
  - Flexible
  - Partnership
  - Active





# Partnerships to Success

- Ultimately Integrated management is about partnerships to achieve outcomes
- Plans are a vehicle, or a contract, to express the nature of the partnership and the outcomes sought





Auckland  
**Regional Council**  
TE RAUHĪTANGA TAIAO